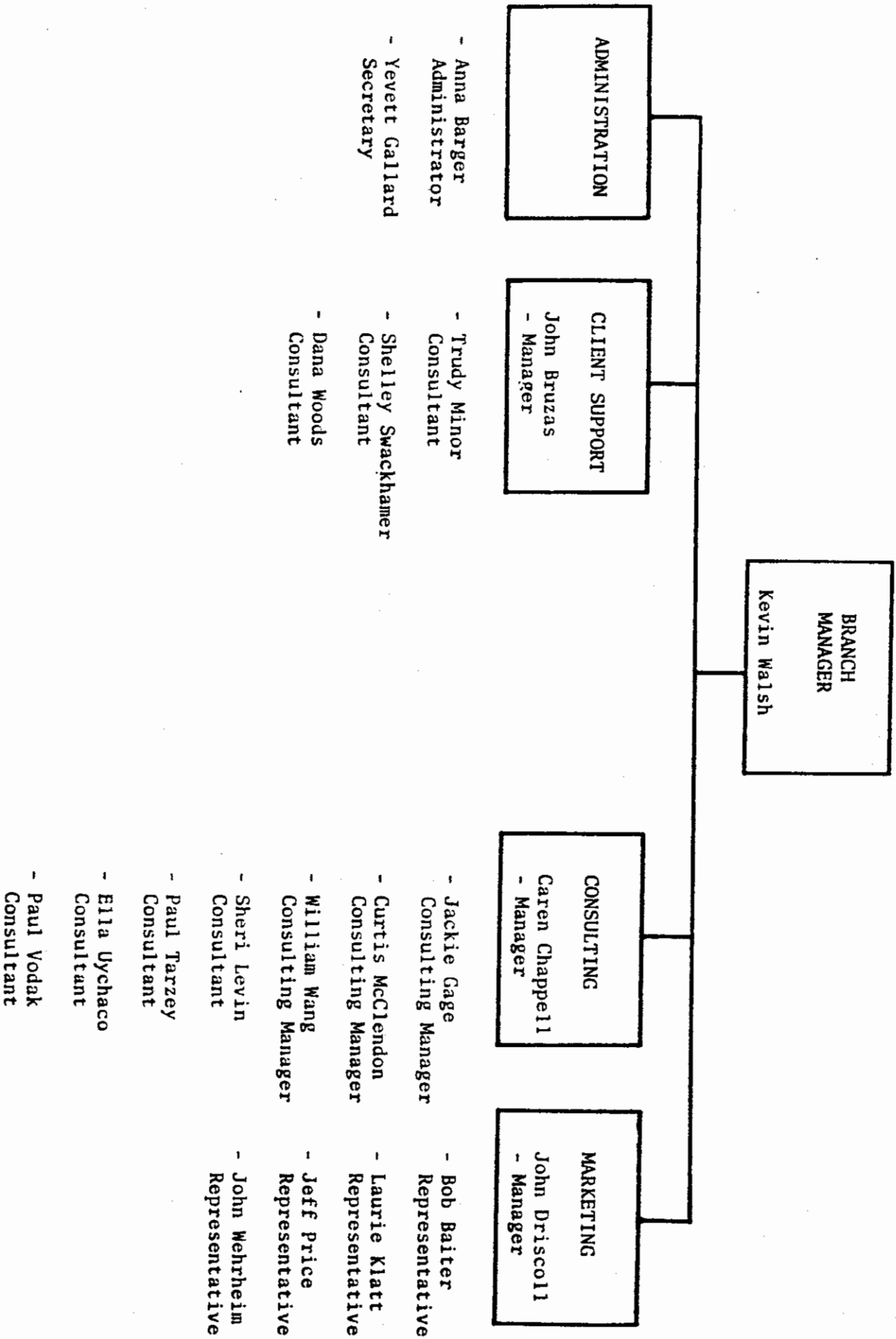
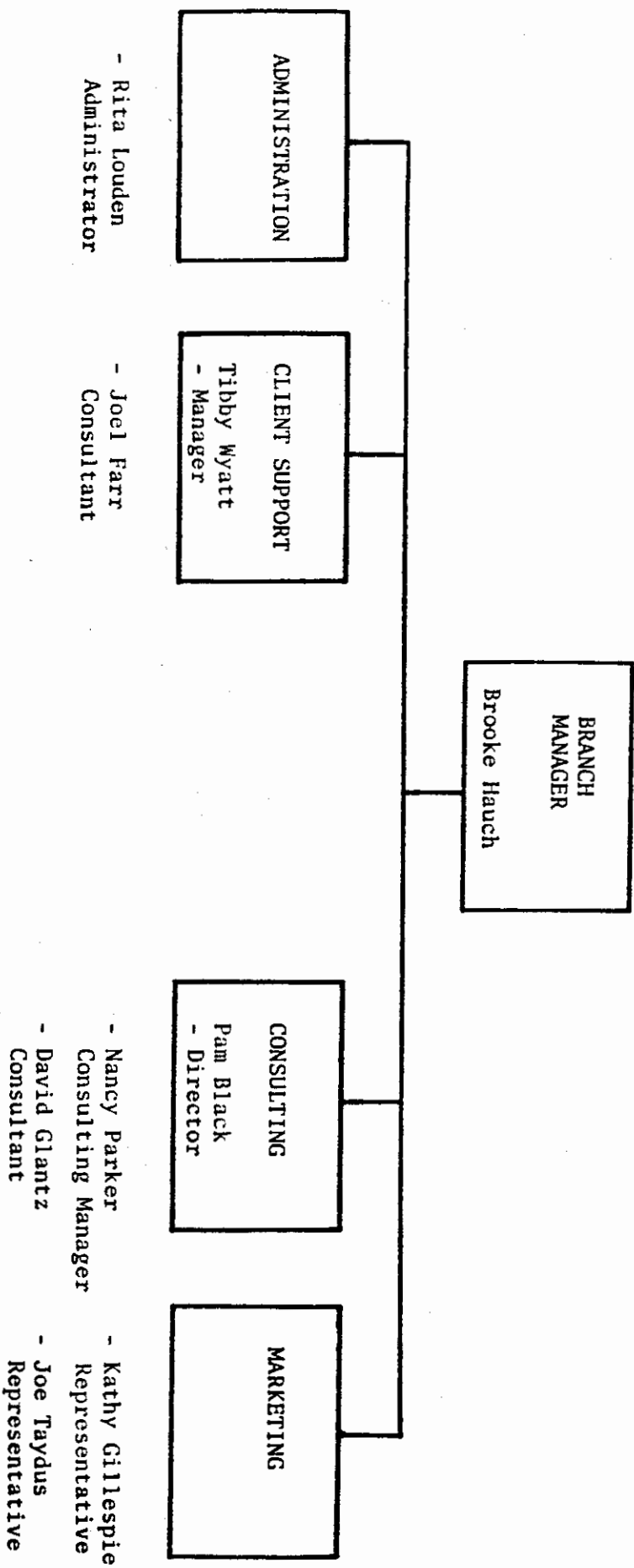


PALO ALTO BRANCH  
 Organization Chart



SAN FRANCISCO BRANCH  
Organization Chart



LOS ANGELES BRANCH

Organization Chart

BRANCH  
MANAGER  
John Dyson

ADMINISTRATION

CLIENT SUPPORT  
- Tim Rudolph  
- Manager

CONSULTING  
Pat Uhl  
- Director

MARKETING

- Vicki Kuncir  
Administrator

- Cheryl Moss  
Receptionist/Clerk

- Edwin Parker  
Consulting Manager

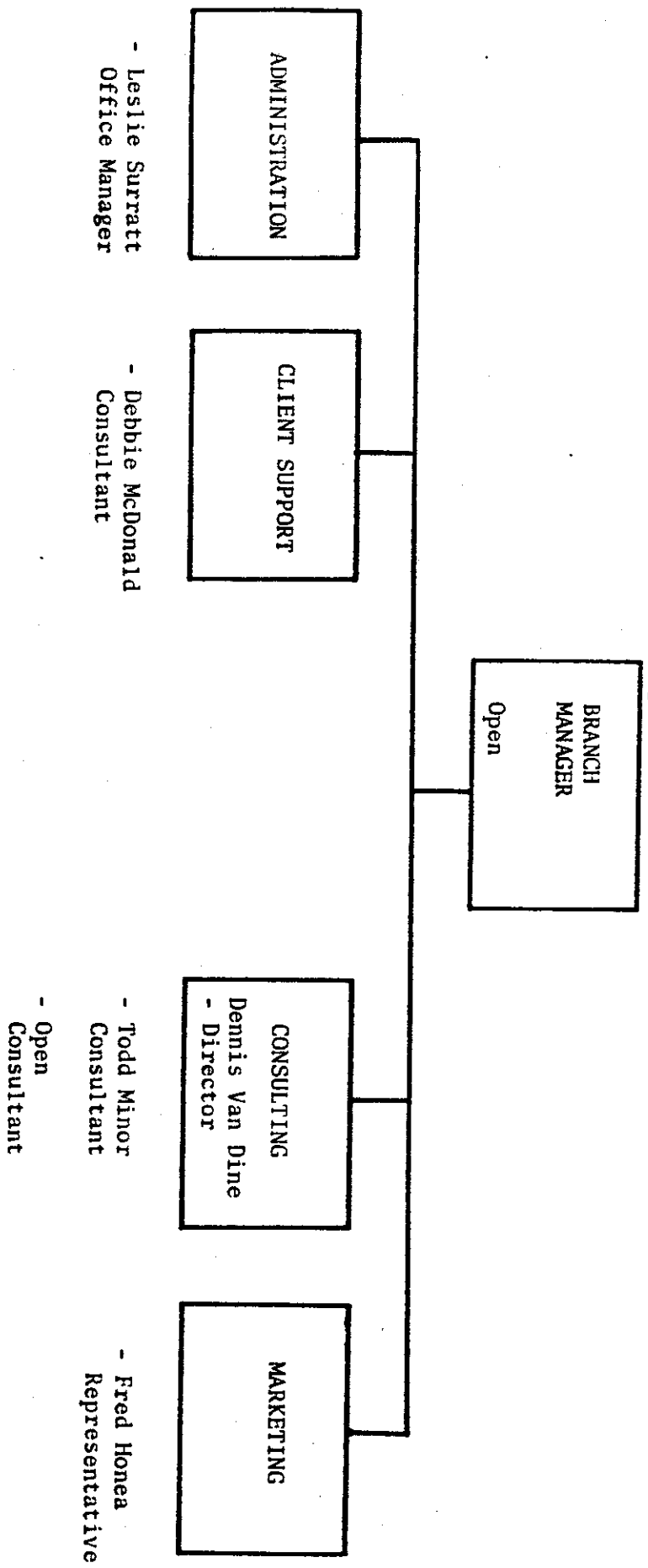
- Lori Conover  
Consultant

- Dick Hardy  
Manager

- Open  
Representative

DALLAS BRANCH

Organization Chart



NEW YORK BRANCH  
Organization Chart

Eastern Regional  
Vice President  
Dick Giordanello

ADMINISTRATOR

- Liz Cunningham  
Secretary
- MaryAnn Jelosits  
Administrator

CLIENT SUPPORT  
Todd Ziesing  
- Manager

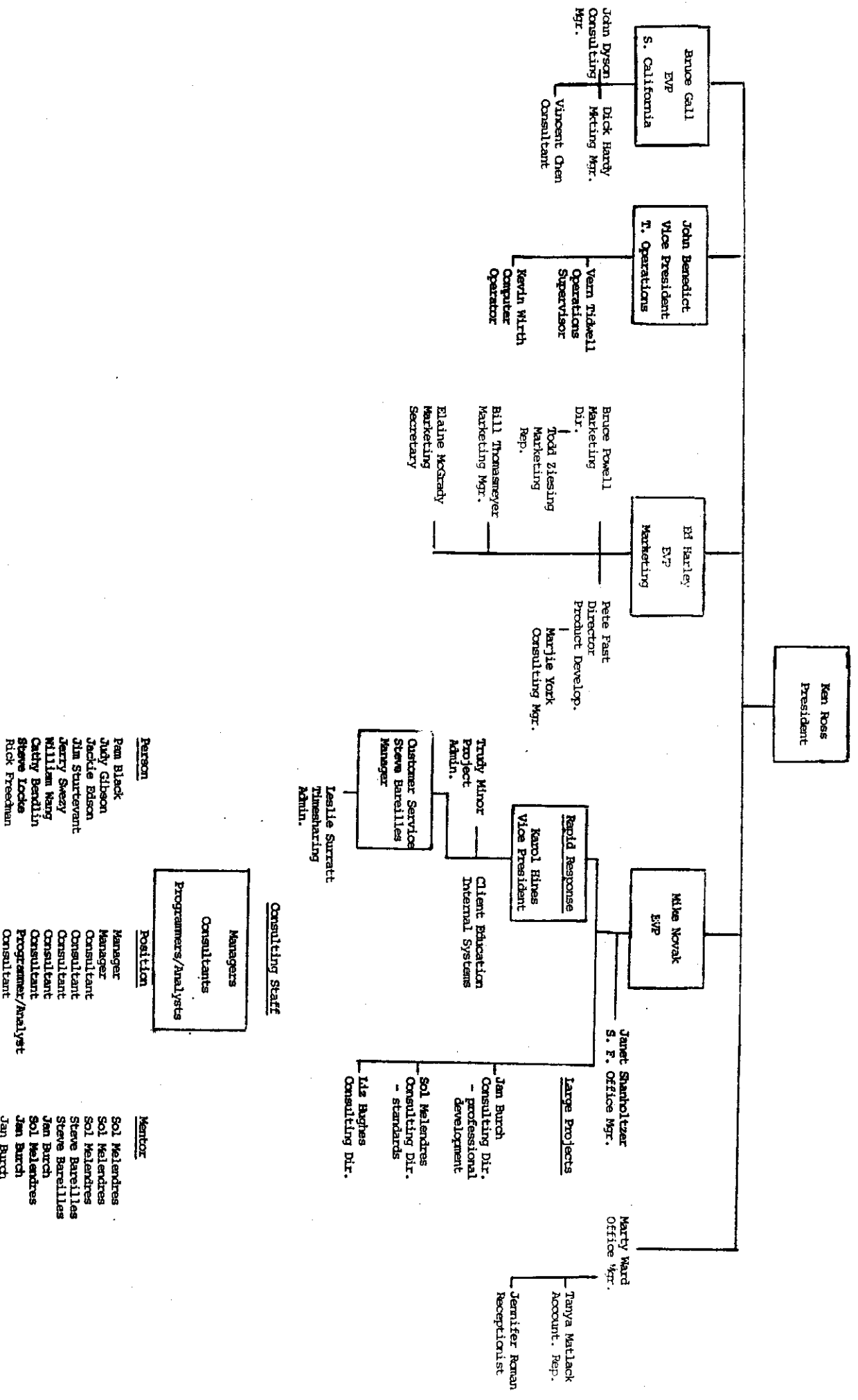
CONSULTING  
Joan Dunn  
- Director

- Margaret Angelletti  
Consultant
- Steve Wasserman  
Consultant

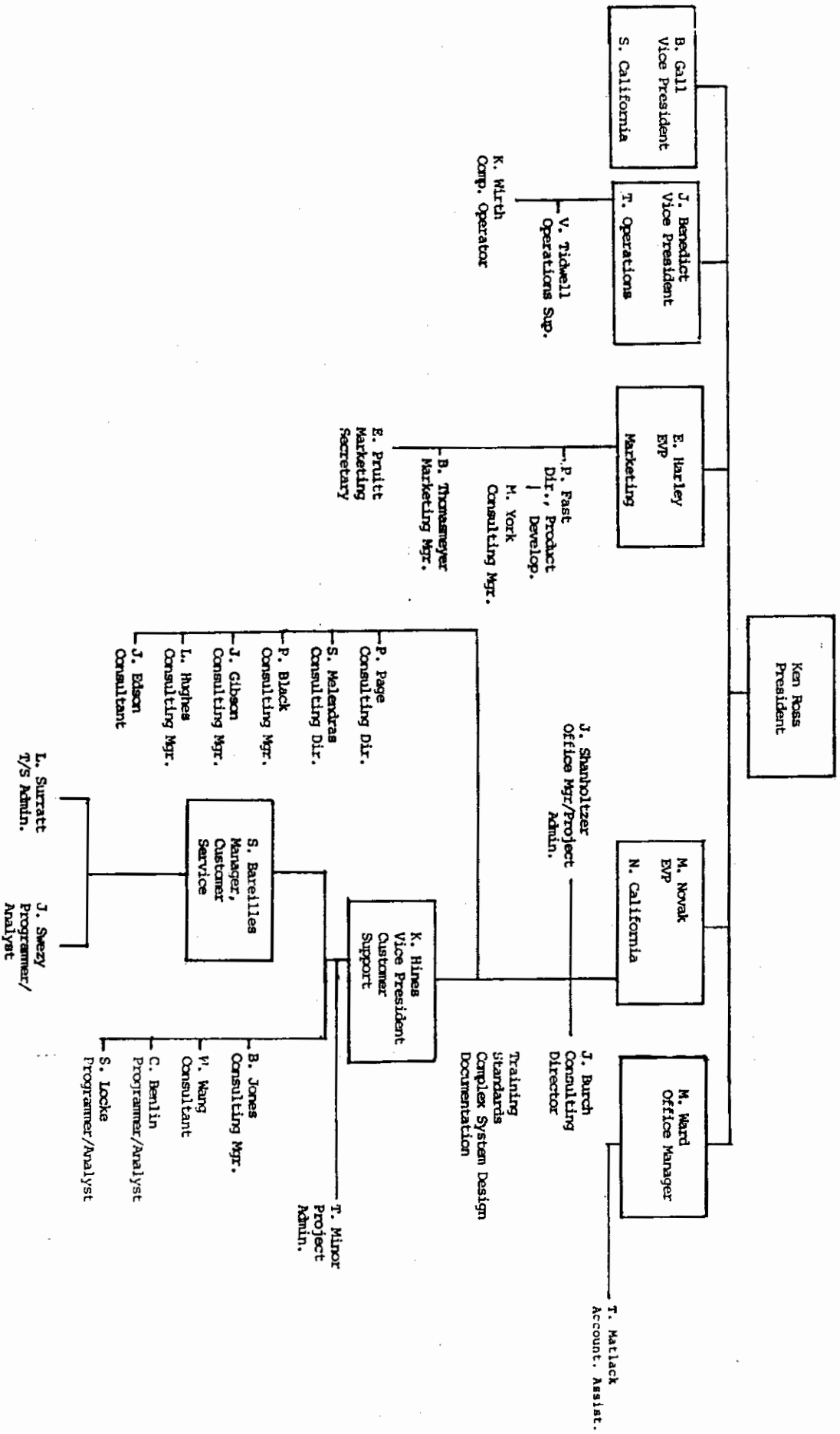
MARKETING

- Ann DePaul  
Representative  
MAPS/Pro
- Marty Lippman  
Representative
- Barbara Martin  
Representative
- Peter Sobilloff  
Representative

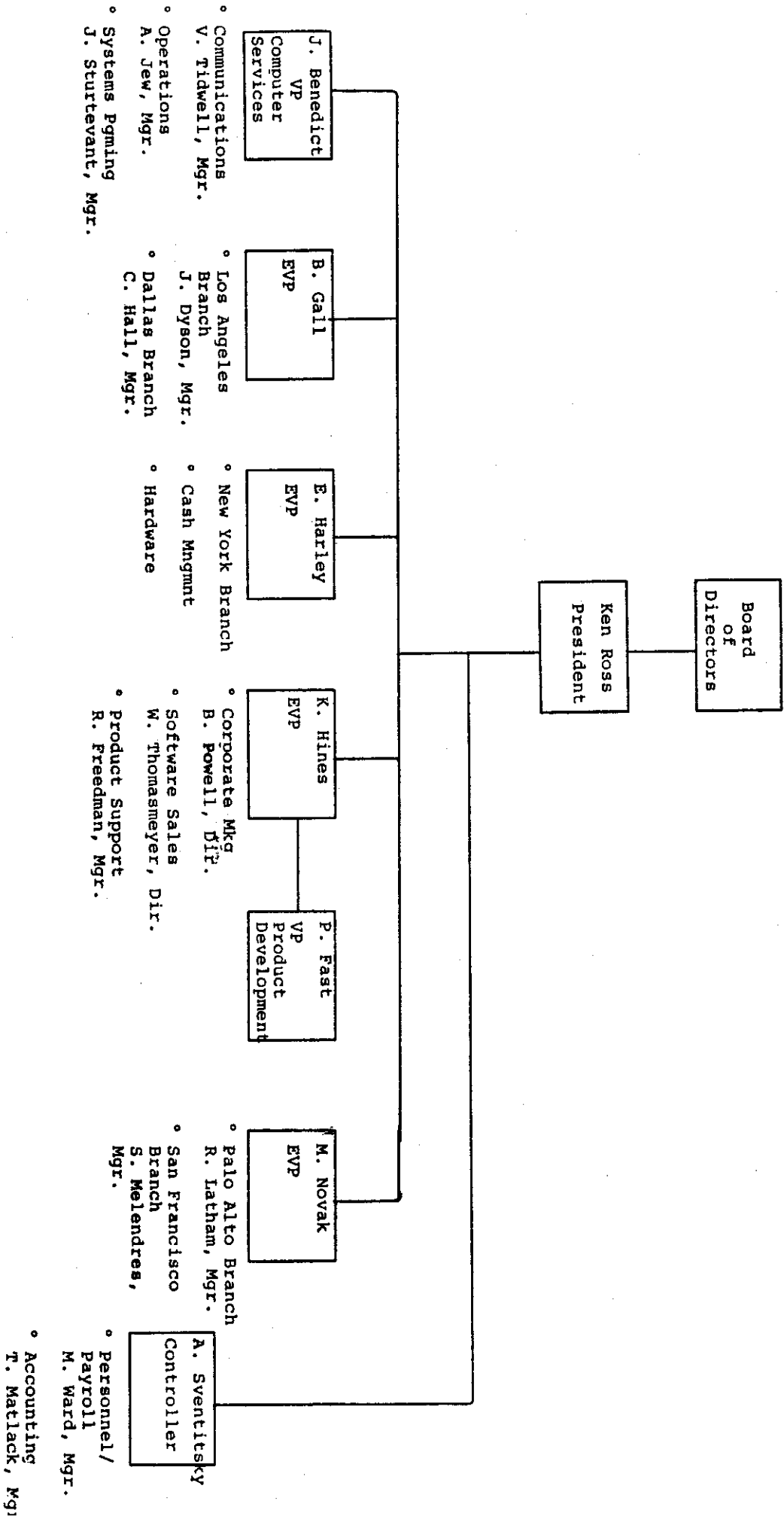
ROSS SYSTEMS, INC.  
 Organization Effective May 1, 1980



ROSS SYSTEMS, INC.  
 Organization Effective November 1979



ROSS SYSTEMS, INC. - EFFECTIVE March 1, 1981







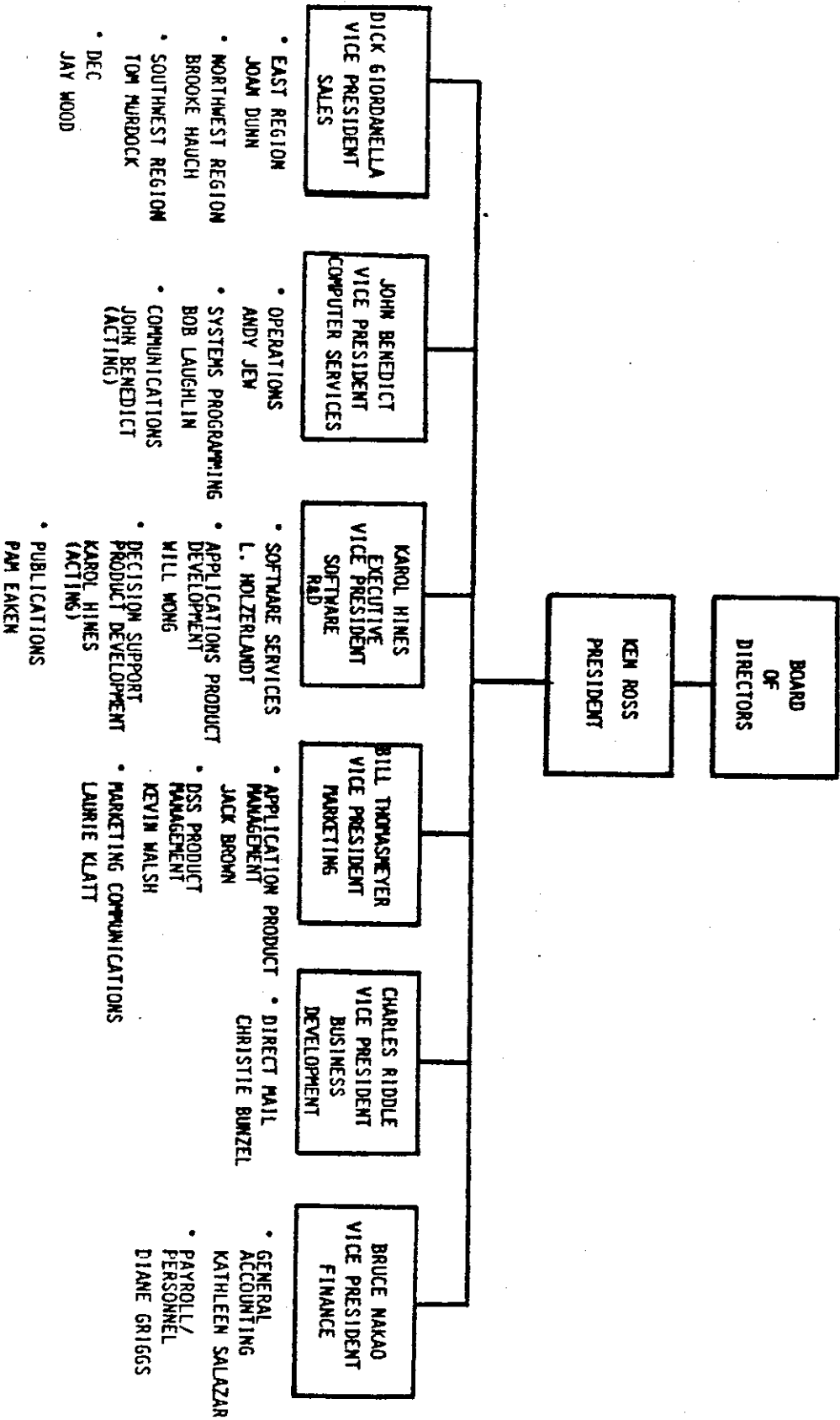
ROSS SYSTEMS

1860 Embury Circle Road  
Palo Alto, CA 94303

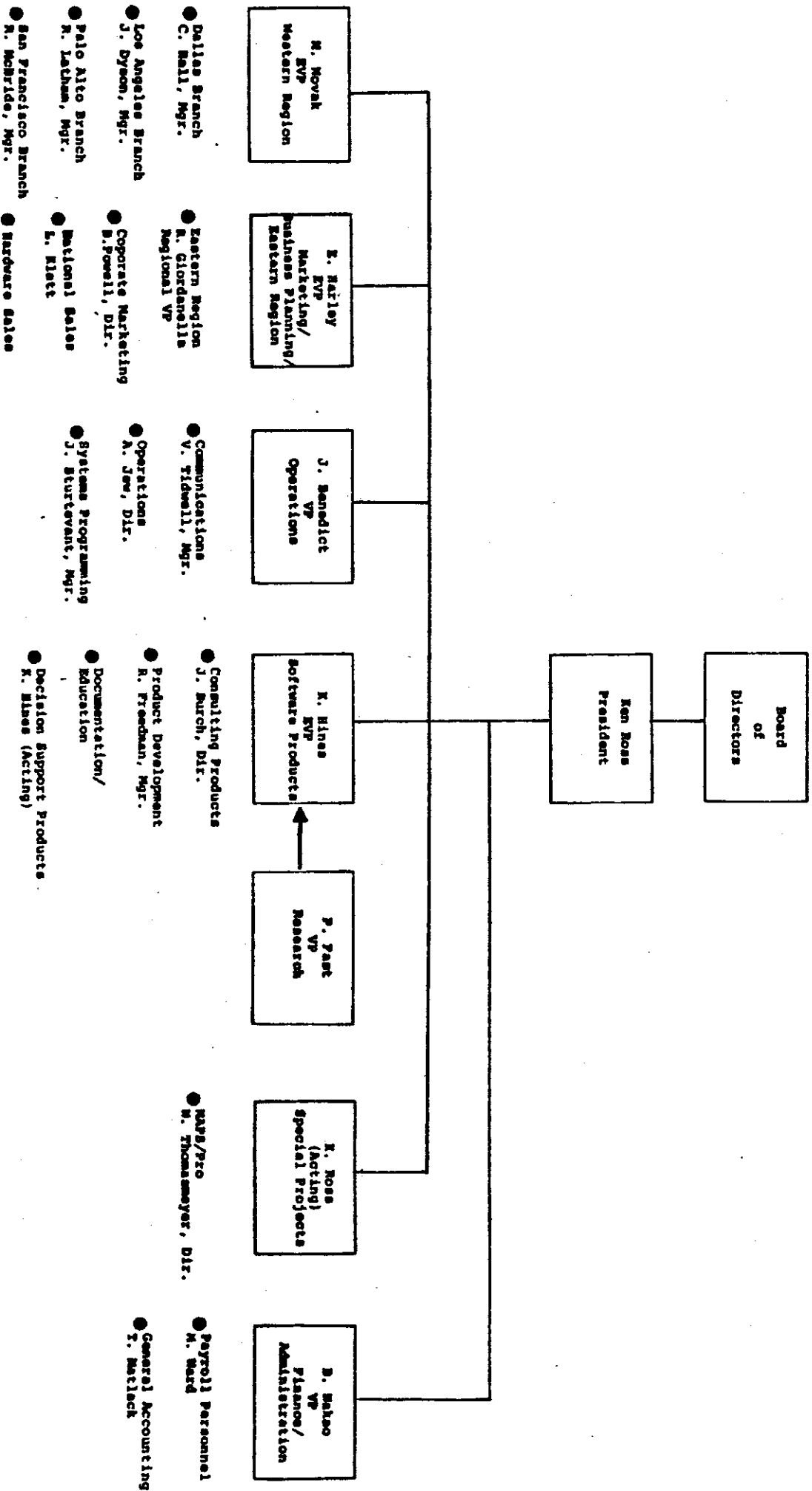
# ROSS SYSTEMS, INC.

## Organization Chart

Effective 2/10/84



# ROSS SYSTEMS, INC.





ROSS SYSTEMS

1860 Emburydoro Road  
Palo Alto, CA 94303

# ROSS SYSTEMS, INC.

## Organization Chart

Effective 01/01/88

