



ISBD

INFORMATION
SERVICES
BUSINESS
DIVISION

ROCKVILLE,
MARYLAND

August 2, 1976
05.62

ISR-500: A Major New Foreground Software Release

ISR-500 is ready for field testing. Selected customers with substantial production applications will be given an opportunity to take advantage of this testing period, beginning around August 1, to make sure all new and improved features work properly on their runs, and to verify that no previous features used by the customers have been lost.

ISR-500 is to be the vehicle by which ISBD will be able to offer its evolutionary new Fortran product, due to be introduced later this year as Fortran 77. But in addition, it includes a number of additional software enhancements as well as several completely new and useful features.

First, run-time limits have been modified so that the first limit established is the controlling one. That is, RUN-100 means the job stream will abort if more than 100 CRU's are

generated — of particular importance to CMF files and IND runs which use CALL CMD.

Improved run-time limits give the user better control over the number of CRU's generated in total. And it also eliminates the danger of a customer's program getting caught in the proverbial "processing loops" even when the program is run from a command file.

The system commands LOCate and CHAnge no longer require random scratch files. They can now operate on any file size and have other new capabilities. Of particular importance to programs that use CHA or LOC through CALL CMD. This enhancement allows us to make more efficient use of our computer capacity, as "random space" is no longer needed. The user will no longer see CAN'T OPEN SCRATCH FILE messages.

Now, for the first time, you can edit any allowable file size up to 4,000 PSU's, and there are also other new capabilities to make editing easier for the user.

The TTY command output is now two digits longer. TTY will now produce a nine-digit number. This is of importance to programs that CALL CMD TTY or read an output file containing TTY command output. The extra digits allow for mini-remote concentrators being deployed in the network.

The BASIC and FIV backup compilers (ZBA and FVI) are replaced with the current FIV and BAS compilers. Programs saved under ZBA or FVI should be tested and saved under the new compilers. Customers affected should be made aware of this modification. Marketing notification plans include an on-line information file at the appropriate time.

Among the new features of ISR-500, nested CALL CMD will now be allowed as far as three levels deep. This gives management and the designing programmer more control and allows much greater flexibility in design.

Also, the EDIT CATALOG capability is now even better. It allows users' file descriptions to be automatically sorted in any of a great many different ways . . . and it can sort catalogs of any size now.

Another new feature is that High Speed Service (HSS) allows multi-sessions without redialing, and it supports the PEBCDIC character set. So if a user wishes to access more than one user number during a single on-line session, it's no longer necessary for

Continued on page 2

Winning Phoenix Team Celebrates in Style



Melanie Bouer's Phoenix Branch walked away with ISBD's first-quarter top honors, and recently they got together at the Arizona Biltmore for a celebration. From left: Rich Orantes, Senior T/R; Bob Binkert, Senior T/R; Norma Frinch, Acting Technical Manager; Jim Schuster, Manager, Southwest Zone; Melanie Bouer, Branch Manager; Peter Fuentes, Senior T/R; Florence McCorkle, Branch Administrator; Barbara Woodward, A/R; Bill Breedlove, Senior A/R; and Lee Demarest, Senior A/R.

GENERAL  ELECTRIC



New DMS/STATSYS Interface: One More Money and Effort Saver for Customers

A new Mark III® Service enhancement can mean new cost savings and added convenience for many of our customers — another reason for selecting and staying with ISBD. It's an interface between DMS, our massive Data Management System, and STATSYSTEM, our statistical analysis program.

Now, for the first time, users can retrieve information directly from their DMS databases for use with our efficient, results-oriented STATSYSTEM program, where they can analyze it in just about any way they like; and then the results may be printed out for immediate use, and/or written to a file for use during a database update.

In the past, users wishing to do statistical analysis on their facts and figures had to retrieve the information from their DMS databases (if it is stored there), do some complicated programming, then re-enter the information into STATSYSTEM in a completely new format. This time-consuming, costly function has been rendered obsolete by our automatic new interface. Of course, users must still run statistical analysis routines within STATSYSTEM to instruct it in the types and amounts of information desired analyzed . . . what facts and figures are to be compared against what other facts and figures, and in what way, for example.

But Floyd DeAndrade, Product Programs Specialist, said this is a small task compared with the steps previously necessary. "For one thing," he said, "it allows for far more sophisticated analysis of users' data than ever before. And it's no longer necessary to 'read' ASCII files into STATSYSTEM." He said users should experience considerably lower CRU usage costs, thanks to the new interface, not to mention the man-hours saved by use of its automatic features.

For additional information on this new interface, give Floyd a call at 8*273-4718.

ISR-500 *Continued from page 1*

him to hang up and redial. This is made possible by using the *EOM command instead of the *EOS command.

The OPTION command now allows TTY OFF/ON. OFF suppresses the system output from CALL CMD and CMF runs. This new feature gives the programmer better control than previously over what the system does. It will very likely result in a reduction in user time and output costs too.

And, as stated earlier, ISR-500 will permit the release of the Division's new Fortran 77, which will embody a number of exciting enhancements. Fortran 77 is due for field tests beginning in mid-August, and Update readers should look for more details in future issues.

ISR-500 field tests will be conducted on a special system separate

from our cluster systems, and the test versions of the customers' programs will be run in parallel — at no cost to the customer — with their regular runs.

It is expected that the first week of August will be light in terms of user tests. This may be a good period for ISBD personnel to check the system out internally. Coordinate this activity with Bob Loew, NSO Senior System Specialist at 8*273-4571. Any technical questions you may have should be referred to Bob. If you have questions regarding the marketing implications of this release, call Fred Wood, Senior Specialist in Marketing, at 8*273-4624. Both Bob and Fred believe you'll find that ISR-500 offers both new efficiencies and new capabilities that will help make MARK III Service still a better, more valuable tool for your customers.

July Service Awards

Thirty-Five Years

Henrietta K. Curl Philadelphia

Fifteen Years

Sandra L. Brown Brook Park

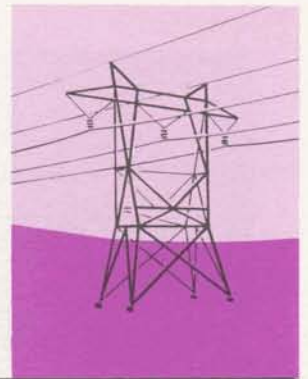
Ten Years

Bruce M. Ayer Rockville
Glen J. Eubank Rockville
Joseph T. Schartman Rockville
Carolyn S. Littles Rockville
Fred A. Wood Rockville

Five Years

Michael P. Chan Palo Alto
Paul H. Lebowitz Rockville
Celia H. Baldwin Stamford
Joseph M. Worthington Atlanta
John E. Boyd Rockville
David P. Thacker Charlotte
James H. Winchester Los Angeles

Update is published bi-weekly by the Information Services Division for the benefit and information of employees. Articles and photographs may be submitted to Update, Information Services, 401 N. Washington Street, Rockville, Maryland 20850; or call 8*273-4387.



Two New Electric Utility Programs On MARK III Network Software Service

Two new NSS programs of value to electric utility companies, created and owned by General Electric's Electric Utility Systems Engineering Department in Schenectady, are now in the NSS library, and are available for customers' use.

They are *Transmission Line Environmental Digital Studies* (TRENDS); and *Electromagnetic and Electrostatic Transmission Line Parameters* (EMES7). Sales Manual descriptive profiles have already been written and printed for both products. Their publication numbers are 5204.42 and 5204.51, respectively.

TRENDS is a package of six computer programs designed to calculate the environmental effects of EHV and UHV transmission lines. The package provides the capability for analysis of ground-vicinity electric fields, audible noise, radio interference and corona loss calculations. This interactive Foreground Service package is controlled by an executive module which controls execution of individual programs of TRENDS to allow any or all to be run during a single study.

EMES7 is designed to assist electric utilities in calculating the electromagnetic and electrostatic line para-

meters for overhead lines. It provides the user with a convenient means of determining these line parameters rather than the use of conventional handbook methods, which may be no longer adequate, or through hand calculations that are laborious, time-consuming and subject to errors.

The program calculates the electrical characteristics of a system of overhead

conductors for either EHV or UHV lines, as well as overhead HVDC transmission lines. Flexibility is provided through the program's ability to handle odd or non-standard phase conductor configurations and tower geometries.

For additional information on either of these new NSS products from EUSED, call Ralph Bice at 8*273-4722.

Dottie, Diana Win Effective Presentation Trophies



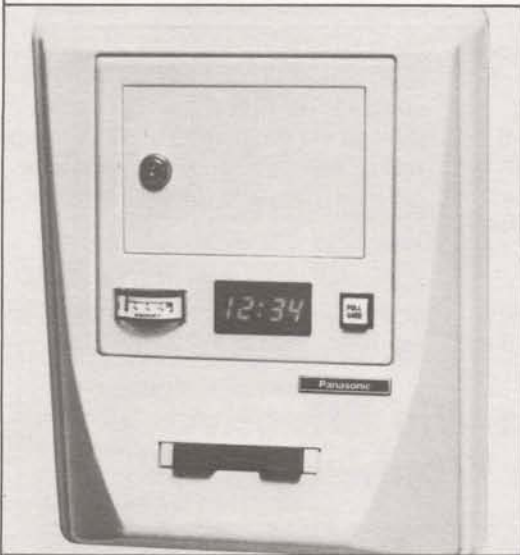
Dorothy Tumolo (left), NSO Customer Assistance Specialist, and Diana DiGiulian, Secretary, International Support Operation, recently won championship and runner-up trophies, respectively, for their speeches in the Effective Presentation finals at a graduation banquet at Rockville's Ramada Inn. Instructor Bob Rogers, Product Promotions Specialist, offers congratulations. Effective Presentation is a 15-week course in ISBD's Employee Development Studies Program, designed to teach students to communicate more persuasively in all situations. The course is expected to be offered again in the 1976-77 EDSP academic term.

New Literature Folder Now Available

An attractive new literature folder has been created and produced for use by Field Sales Personnel. Featuring a silver MARK III Service mosaic on a white kromecoat background, it is now stocked on OLOS (900.54). Two popular sales brochures have also been reprinted: the Order Service brochure (5302.15) and the "Value" brochure (0910.20).



New Automatic Time Clock Terminals Linked to the MARK III System



The new Panasonic S-Line Data Entry Terminal.

A brand new and unique sort of terminal has been qualified for use with the MARK III system, and it is already in use by one of ISBD's major international customers.

Produced by Panasonic, the terminal is called the "S-Line Data Entry

Nuclear Power Plant Gives Our National Bird a Boost!

A nuclear power plant, built by GE and equipped with two GE nuclear reactors, is helping some bald eagles, America's emblem and a threatened species, stage a comeback.

The Quad Cities power plant, jointly owned by Commonwealth Edison and Iowa Gas and Electric, is located on the Mississippi River near Moline, Ill., and was licensed to begin operation a little over three years ago. At that time a study showed less than 30 bald eagles within a 25-mile radius of the plant. A one-day count of the birds taken last December revealed 107 eagles within the same area — an amazing increase.

Terminal," the "S" standing for "stand-alone." The terminal looks like a small wall-mounted box into which each employee inserts a time card upon arriving at and leaving from work. The time cards used by employees are not the typical printed paper cards, but rather a plastic card which looks very much like an ordinary credit card with punched holes which, when read by the terminal, translate into the employee's pay number.

Each S-Line terminal is capable of reading and storing up to nine ASCII characters for each employee, and it also records the exact time the employee punches in or out. The terminal has a memory which can accommodate up to 512 entries. Assuming that each employee will use the "time clock terminal" twice daily, each location can accommodate up to 256 employees.

The S-Line terminal is "married" to a Texas Instruments Model 733 KSR, which is used to output the stored information at the end of each day and/or erase it.

According to Harry Bernhard, a biologist for Commonwealth Edison's Department of Environmental Affairs, the rise in the eagle population is mainly due to the power plant's causing a small area of the river to remain unfrozen during the winter. This results in an ample supply of one of the eagles' favorite foods: fish. "I've studied this area for several years," Bernhard states, "and environmental damage around this plant just doesn't exist."

So, in this Bicentennial year, America's national bird is thriving, not threatened, in at least one part of our land, thanks to some help from a nuclear power plant.

Once a day, a designated employee calls in to MARK III Service, and the S-Line/733 KSR combination quickly reads all the day's stored information into the ISBD computer complex. This occurs many times, of course, depending on the number of locations around the country. MARK III Service accumulates the input from all S-Line terminals, and combines this information with permanent files on employees' names, Social Security number, etc. A final output report is then sent to the customer's in-house system for preparation of payroll checks.

According to Harold Stover, Terminal Projects Manager, "This is the first application of its type in the country, as far as we know . . . possibly in the world." Harold explained that he has never heard of any payroll input system as completely automatic as this new configuration appears to be.

"Not only does the system eliminate squabbles about when an employee reported to work, but it totally eliminates the necessity to manually record times, hours and payroll numbers. And with the elimination of those tasks, their attendant errors are also eliminated," he declared.

Harold believes the system is excellent, and that it can be used for a wide variety of MARK III Service customers. "Any company which has many employee locations," he said, "might be prime candidates for this type of setup using the MARK III system and Panasonic's S-Line terminal. This device is a particularly excellent input means for our new Employee Accounting System (EAS)."

For additional information on the new S-Line Data Entry Terminal and how it may be used to help increase ISBD revenue, call Harold Stover at 8*273-4620.

