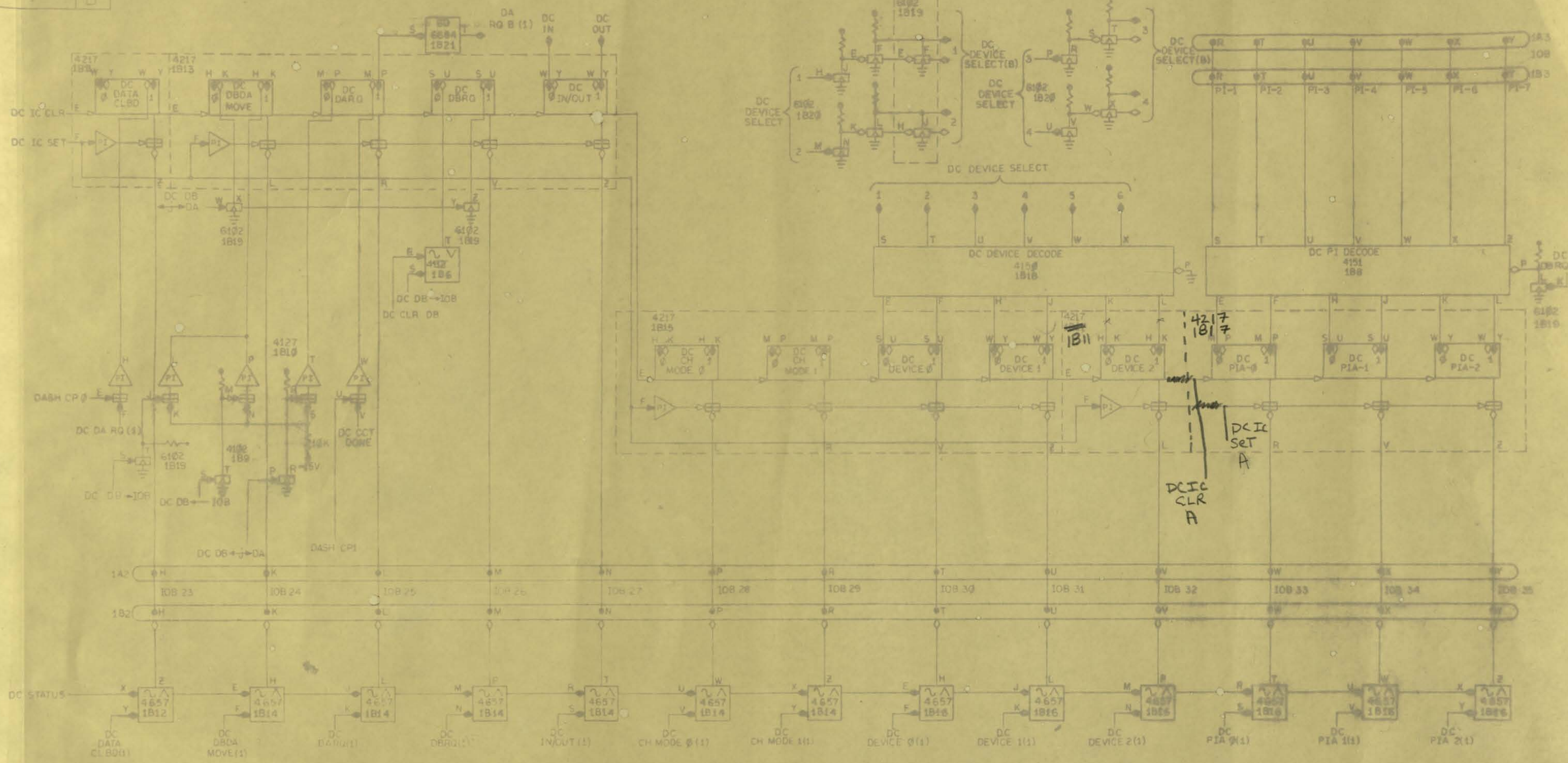


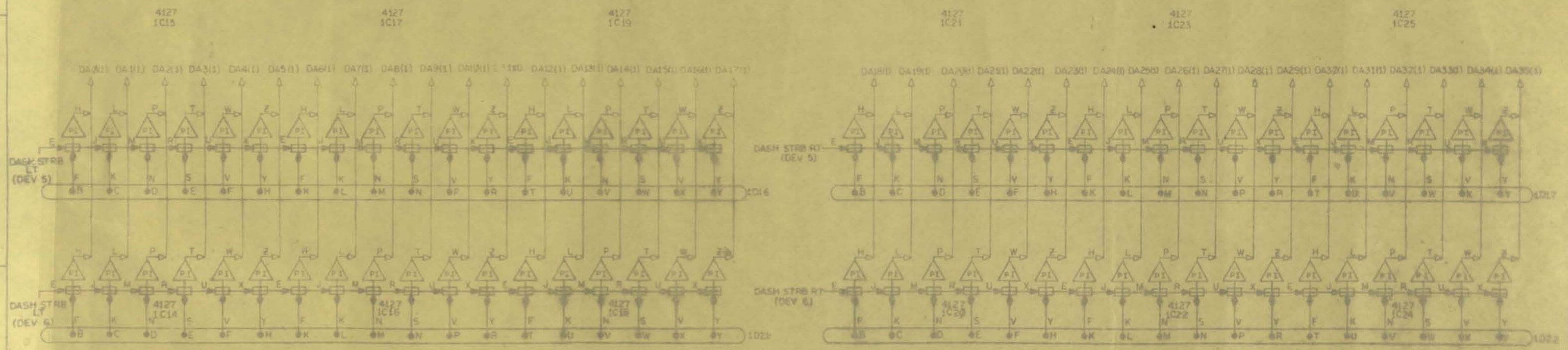
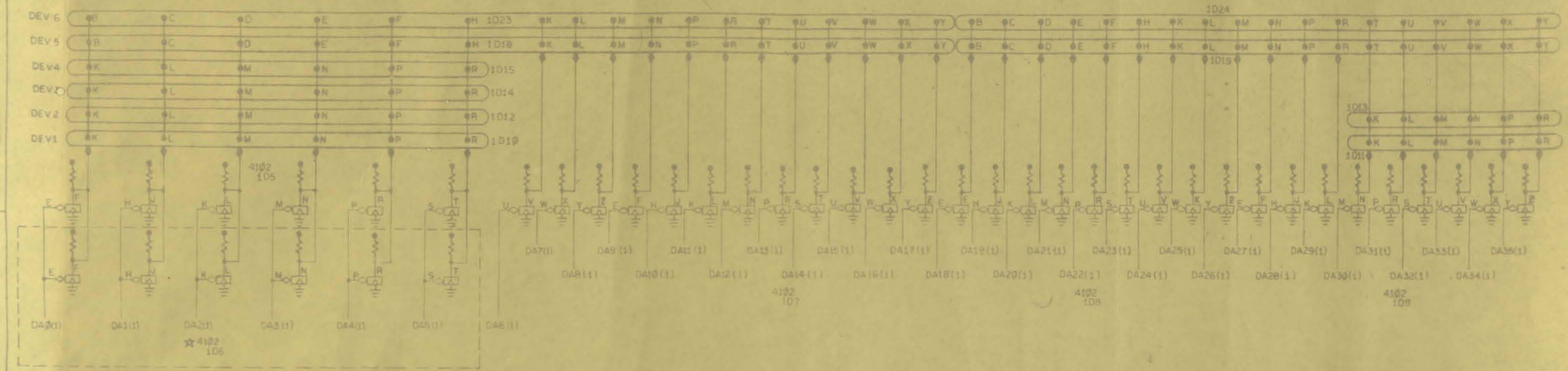
ISSUED
MAR 31 1965

ORDER NO. A22 8-58 C-88	DATE 4-20-65 BY CHECKED APPROVED BY DATE	DRAWN DESIGNED BY CHECKED BY DATE	PART NO. REV. DATE	DIGITAL EQUIPMENT CORPORATION MAYFIELD, MASSACHUSETTS	TITLE DASH-DATA ACC SHFT
					FOR DC 136 POP-6
DC DA RQ 901				ASSEMBLY NO. BS	PART NO. D-136-0-DASH



ISSUED
MAY 3 1965

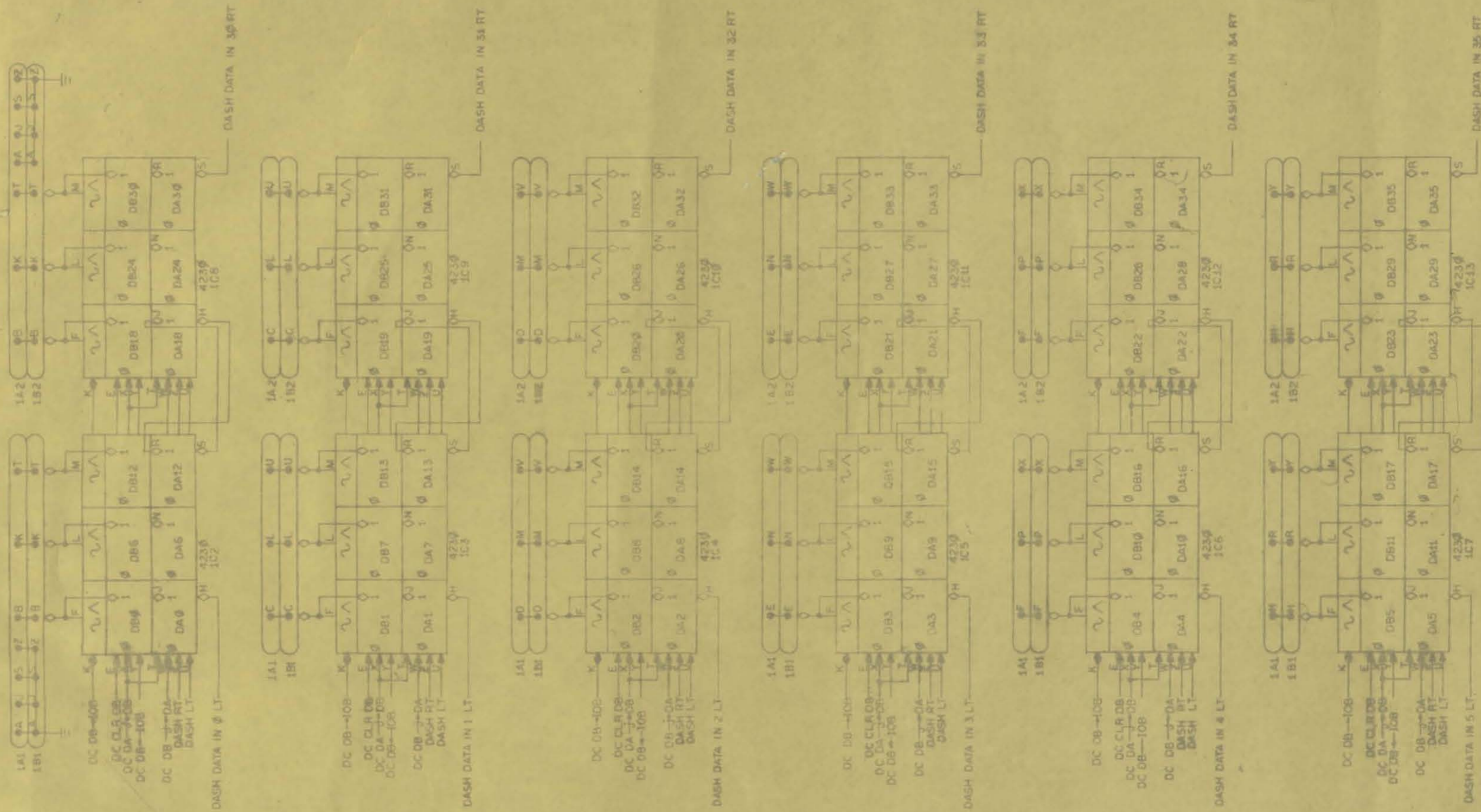
CHANGE A 22 DATE 6-30-64 BY KSS		REVISIONS B-46 DATE 8-26-64 BY KSS		DRAWN J.P. Burt DATE 12-4-63	CHECKED R. Reed DATE 4-23-64	ENG R. Reed DATE 4-23-64	PROJ ENG R. Reed DATE 4-23-64	PROJ R. Reed DATE 4/23/64	digital EQUIPMENT CORPORATION MAYNARD, MASSACHUSETTS	TITLE DC-DATA CONTROL FOR DC 136; PDP-6
ASSY NO.				CODE BS	DRWG NO. D-136-0-DC2	SHEET 1 OF 1		REV LTR B		



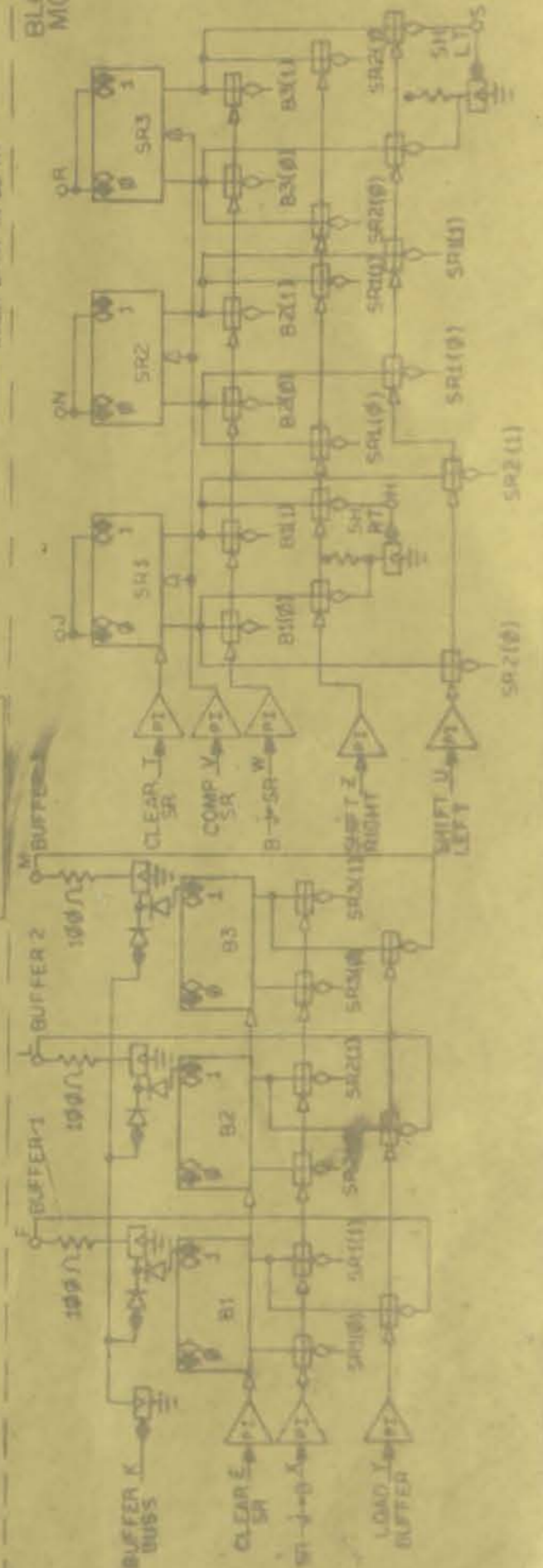
NOTES
 1. ★ PKG USED WITH FOUR OR MORE DEVICES CONNECTED
 2. 1010 THRU 1025 GROUNDS ARE A₁, S₁ AND Z₁.

ISSUED
 MAY 3 1965

CHANGE	DATE	BY	DESIGNED	DATE	digital EQUIPMENT CORPORATION MAYNARD, MASSACHUSETTS	TITLE DB-DATA BUFFER DA-DATA ACC
			CHECKED	DATE		
			DRW	DATE		
			APP'D	DATE		
DATE	BY	REVISIONS	DATE	DATE	CODE	DRWG NO
DATE	BY	DATE	DATE	DATE	BS	D-136-0-DAB2
DATE	BY	DATE	DATE	DATE		
DATE	BY	DATE	DATE	DATE		



BLOCK SCHEMATIC MODULE 4230



ISSUED
MAY 3 1965

NO	DATE	BY
1	4-27-63	...
2	4-23-64	...
3	4-23-64	...
4	4-23-64	...
5	4-23-64	...
6	4/1/64	...

digital
EQUIPMENT CORPORATION
MAYNARD, MASSACHUSETTS

TITLE	DB-DATA BUFFER DA-DATA ACCUM.
NO	DC 136:PDP-6
DRWG NO	D-136-Q-DAB1
ASBY NO	BS

36

Module #	166	136	135	516	551	102	521	401	526	401	344	312	340	761	520	760	522	161	101	
4595																				
4596																				
4597																				
4526																				
4527																				
4530																				
45521																				
4693																				
4604																				
4606																				
4657																				
4658																				
4659																				
4660																				
4671																				
4681																				
4688																				
4689																				
4706																				
4707																				
4800																				
4778																				
4552																				
6102																				
6105																				
6106																				
1793																				
1797																				
1772																				
6113																				
6115																				
6116																				
6117																				
6118																				
6119																				
6122																				
6123																				
6124																				
6131																				
6132																				
6150																				
6151																				
6155																				
1799																				
6203																				
6205																				
6206																				
6227																				
6310																				
6311																				
6603																				
6609																				
6615																				
6684																				
1776																				
1777																				
1110																				

ISSUED
JAN 26 1955

DATE	1/26/55
TIME	10:30 AM
BY	AE
REASON	REPAIR
LOCATION	LAB 300
OPERATOR	AE
REMARKS	REPAIR
INITIALS	AE
CHECKED	AE
APPROVED	AE

Module	167 DUM Access	236 LUM Terminal	237 DUM Terminal	270 Disc File Control
B10Y	6	4	2	
B135	6	17	10	
B113	31	4	8	
B115	2	2	3	
B117	1	1	2	
B124	4			
B153	1	2		
B171	1	1		1
B201	42	10	7	
B20Y	10			
B301		2	4	
B302		1		
B360	9	4	1	
B602	6	2	2	
B420				
B28Y	16	13	1	
G180				5
G280			5	
G281			4	
G282			16	
R00Y			15	
R107	1			4
R111		11	19	3
R115			1	19
R151		1		1
R181	6			1
R201	3	3		2
R202			1	4
R203	2		7	4
R20Y		2		7
R205	18	1		6
R209		8		11
R601	1	1		2
R602	7	4		7
R603				8
R650				
R002			1	
W005	5	4	2	
W020	7			2
W022	33	50	44	27
W051			2	
W100	7	5		5
W101	9	6		10
W102	9		6	
W501			1	
W607	5		4	1
W640		2		1
W990	2			
W995/903	2			
R-155				1
W300				1
R303				1
R302				1
R401				3
R284				2
W120				1

ISSUED
JAN 26 1966

ML

digital EQUIPMENT CORPORATION
MASSACHUSETTS

SYSTEM MODULE LIST PDP-6

D-6-0-2

DATE: 1/26/66
 PREPARED BY: [Signature]
 CHECKED BY: [Signature]
 APPROVED BY: [Signature]

ONE TTY SHOWS FOR EACH ADDITIONAL TTY. ADD: 1-4706 1-4707

SEND - RECEIVE GROUP 632F

0 1 1

ATTACHES TO ONE 632F FOR EACH ADDITIONAL 632F. ADD: 1-4102 1-4103 1-4104

FULL DUPLEX SCANNER 633R

2 2 3 3 3 4 10 1 2 2 2 2 6 1 1 2 4 2

ATTACHES TO ONE 632C FOR EACH ADDITIONAL 632C. ADD: 1-4102 1-4103 1-4104

HALF DUPLEX SCANNER 633B

3 3 6 2 10 1 1 1 1 1 2 3 1 1 2 4 1

ONE TTY SHOWS FOR EACH ADDITIONAL TTY. ADD: 1-4706 1-4707

SEND - RECEIVE GROUP 632C

1 3 1

MODULES

1151 1609 1689 4102 4112 4113 4118 4125 4127 4141 4154 4161 4215 4220 4225 4301 4407 4604 4706 4707 4901

ISSUED JAN 26 1955

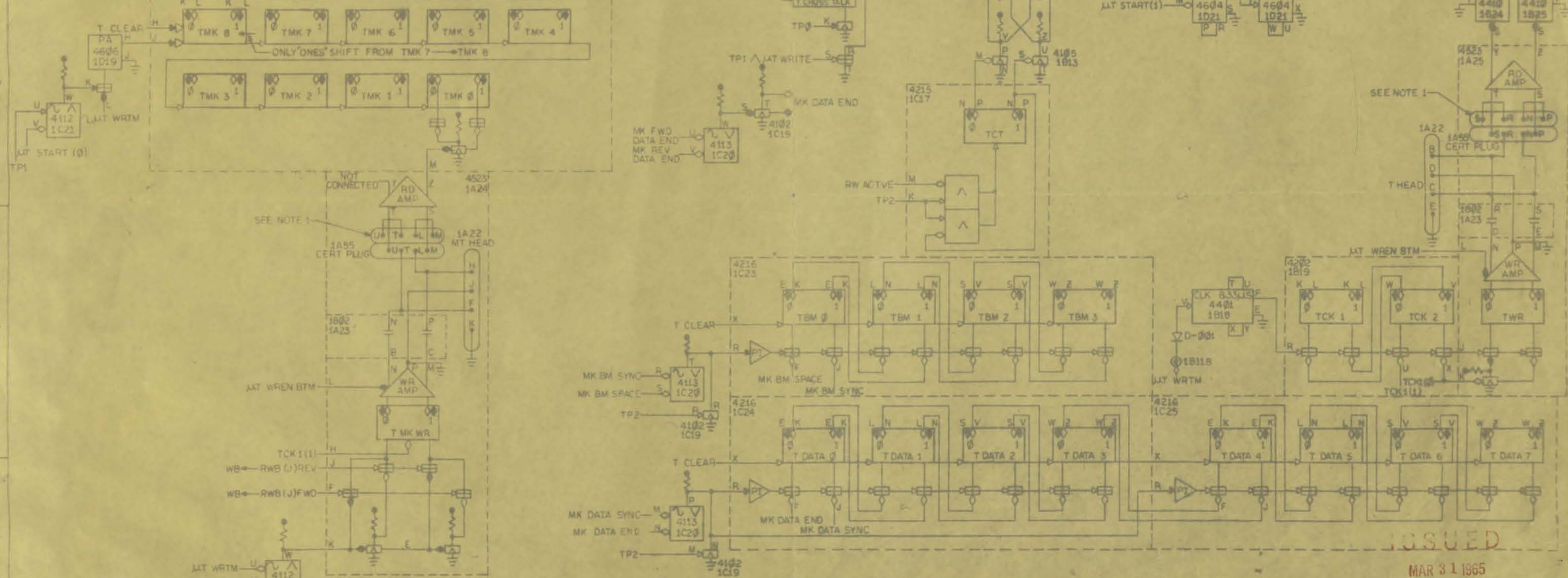
CODE ML

CLASS	DATE	BY	REVISION	STATUS	REMARKS
ADV	1/27	1955			

CHANGE ORDER NO. DATE

digital EQUIPMENT CORPORATION SYSTEM MODULE LIST PDP-6

4200 1C22	TMK8	TMK7	TMK6	TMK5	TMK4	TMK3	TMK2	TMK1	TMK0	
	1	X	X	0	1	0	1	0	1	25
	1	1	1	1	0	1	0	0	1	51
	1	1	0	0	1	1	0	1	0	32
	1	0	1	0	1	0	1	1	0	26
	1	0	OR	1	1	1	0	1	1	73
	1	X	0	0	0	1	0	0	0	10
	1	1	0	0	1	0	0	1	0	22
	1	0	0	1	1	1	0	0	0	70

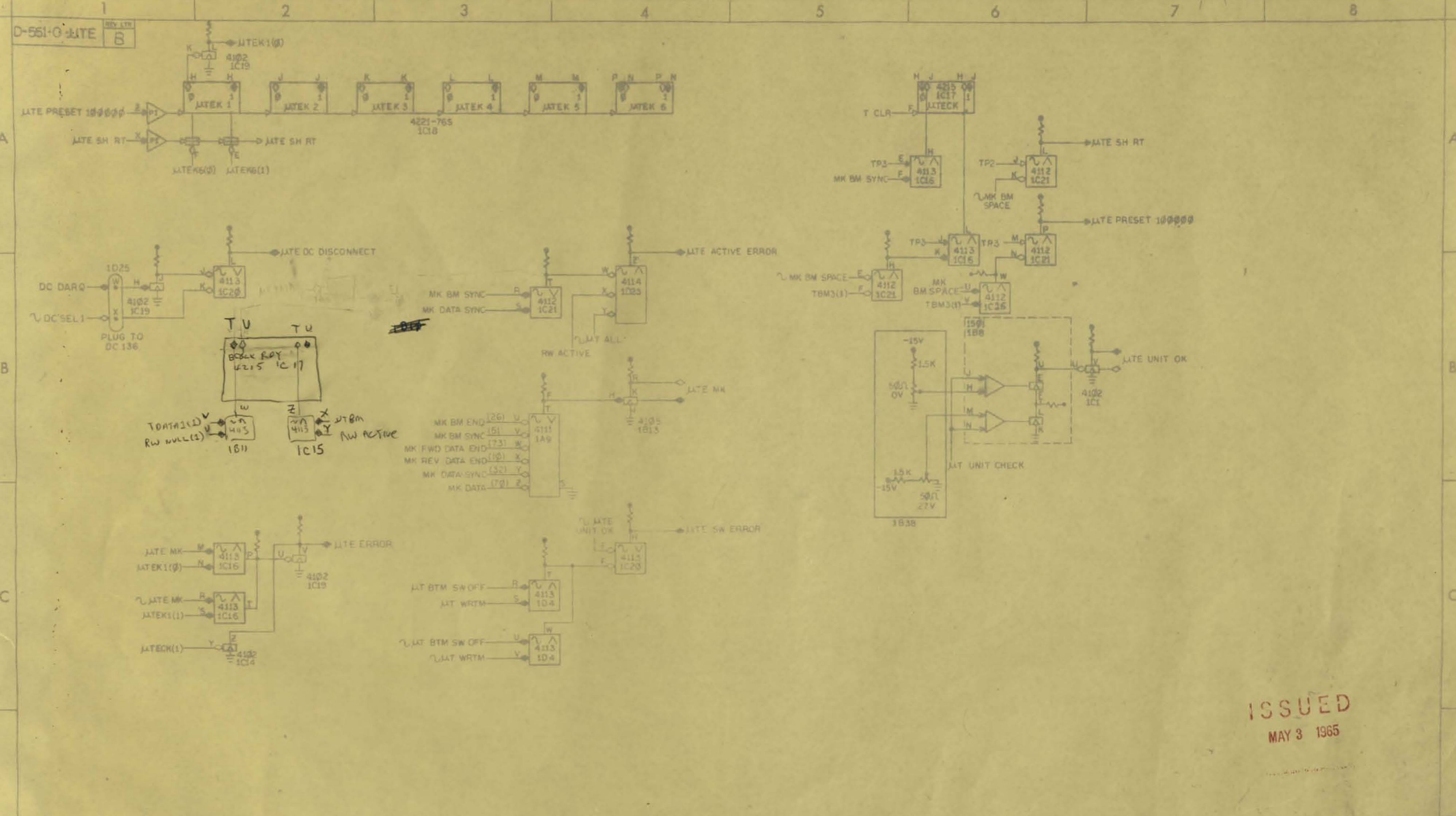


NOTES
 1. 22 PIN MALE AMPHENOL CONNECTOR JUMPED AS SHOWN. FOR ATTENUATION, JUMPERS ARE REPLACED BY THE FOLLOWING CIRCUIT:

ALL RESISTORS ARE 1/2W 10%

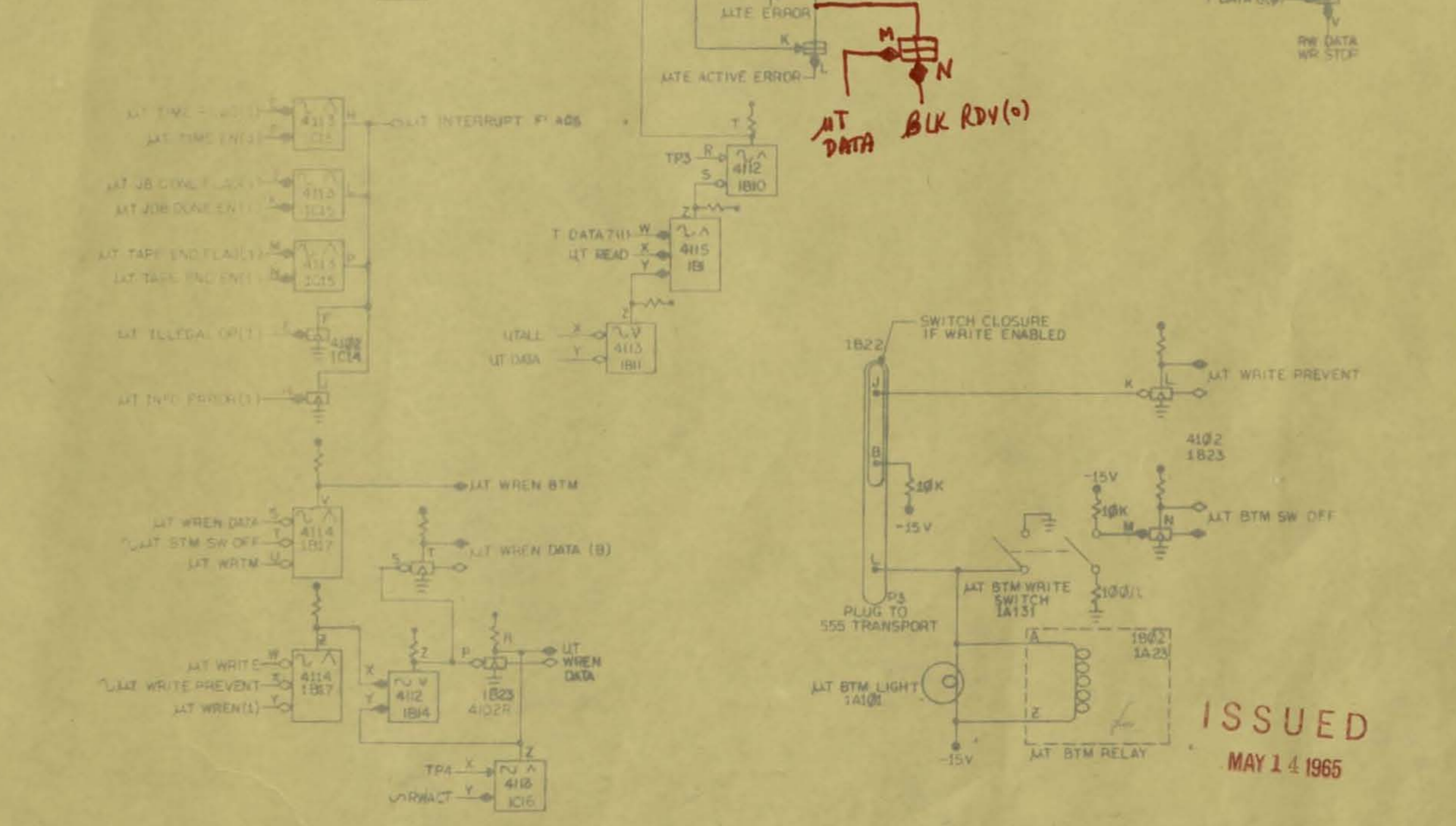
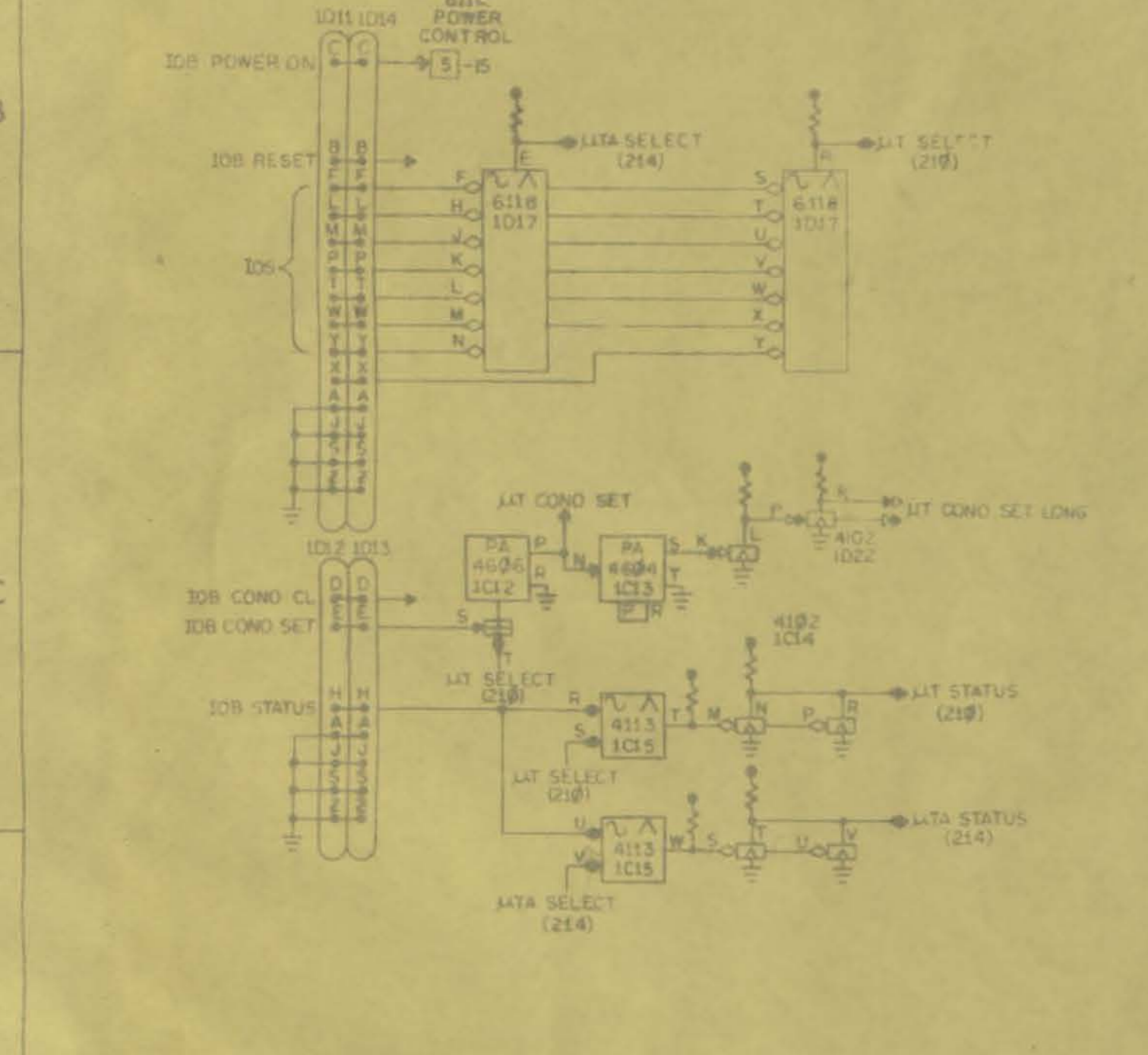
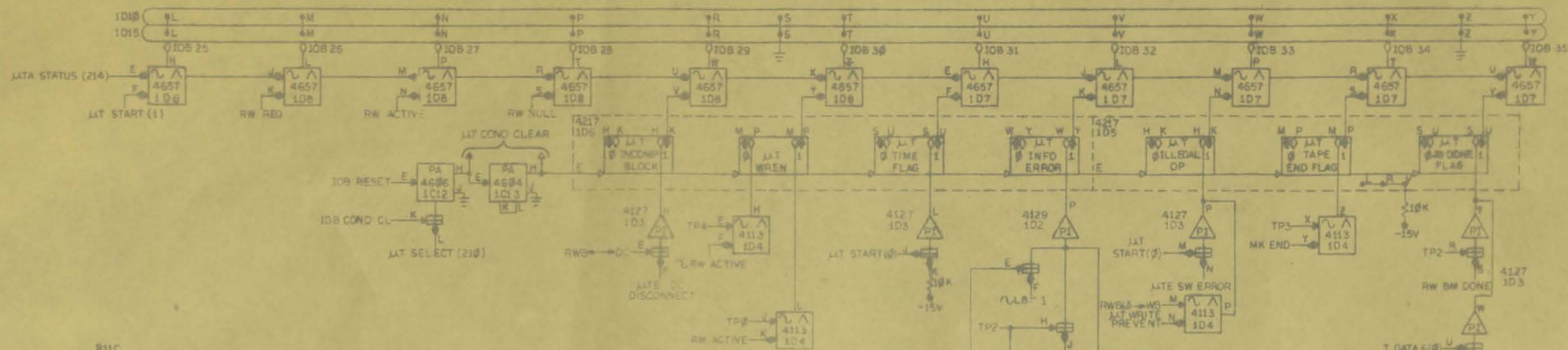
DATE	4-27-64	<p>digital EQUIPMENT CORPORATION MAYNARD, MASSACHUSETTS</p>	TITLE	T.MT. CONTROL
DESIGNED	M. Reed		FOR	JIT 551/PDP-6
CHKD	M. Reed		ASSY NO	CODE BS
PROJ. ENG.	M. Reed		DRWS NO	D-551-O-TMT
DATE	6/2/64	SHEET	OF	REV LTR
DATE	6/2/64			C

ISSUED
 MAR 31 1965



ISSUED
MAY 3 1965

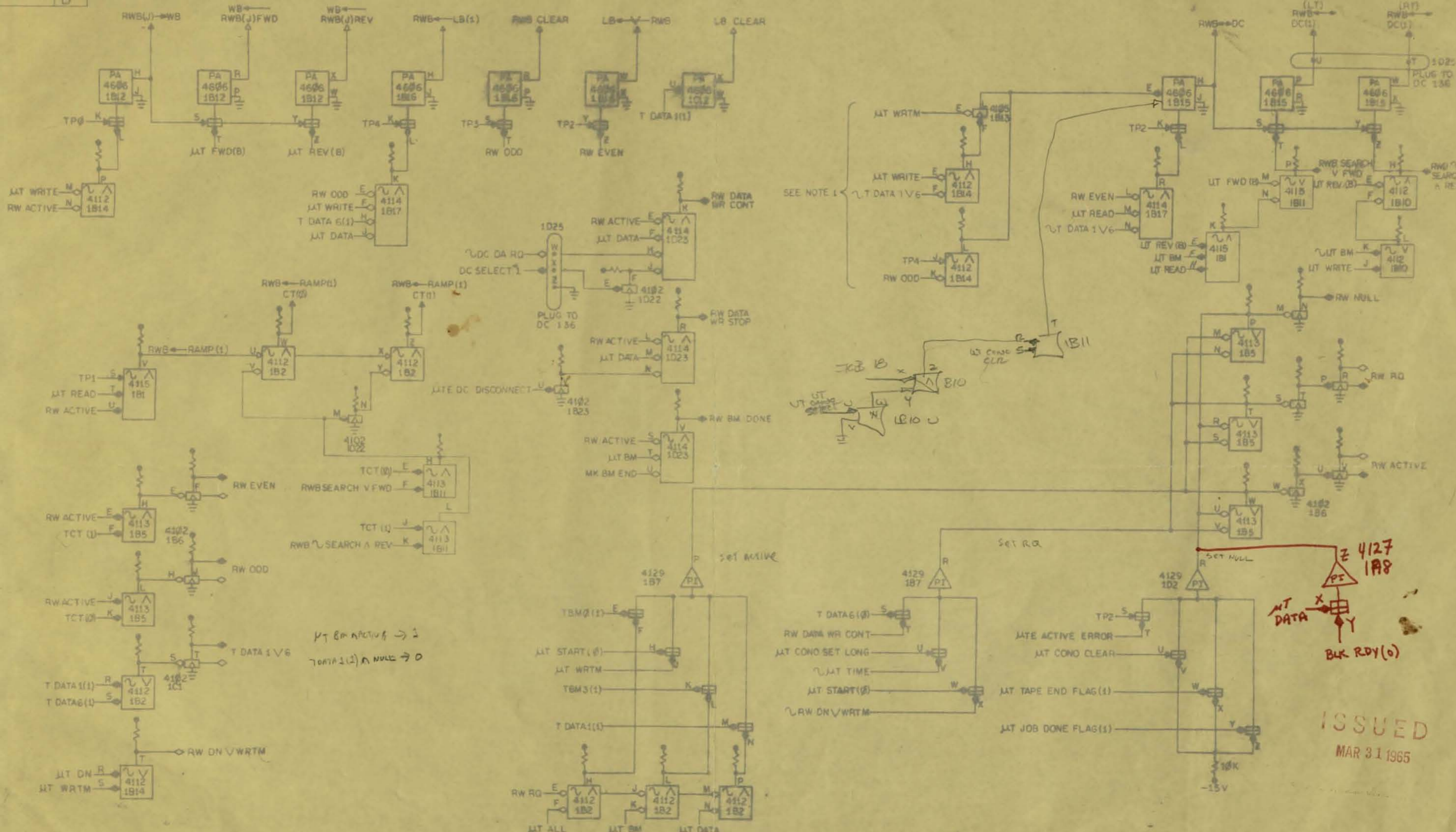
DATE 4-23-64 CHECKED [Signature] DATE 4/23/64 [Signature] DATE 4/23/64 [Signature] DATE 4/23/64 [Signature]		digital EQUIPMENT CORPORATION <small>NEEDHAM, MASSACHUSETTS</small>	TITLE JTE-JT ERROR
CHANCE A-23 4/23/65 B-47 8-28/65 [Signature]			ASSY NO CODE BS DRWG NO D-551-O-LITE SHEET 1 OF 1



Handwritten notes:
 AT DATA
 BLK RDV(0)

ISSUED
 MAY 14 1965

REV. 1/64		DATE		TITLE	
DESIGNED	4-28-64	LTC-DECTAPE CONTROL			
CHECKED		FOR LIT 551 PDP-6			
ENG		ASSY NO			
PROF. ENG		CODE			
DRY		DRWG NO			
		REV. 1/64			
		SHEET OF			
		D-551-0-LTC2			
		E			



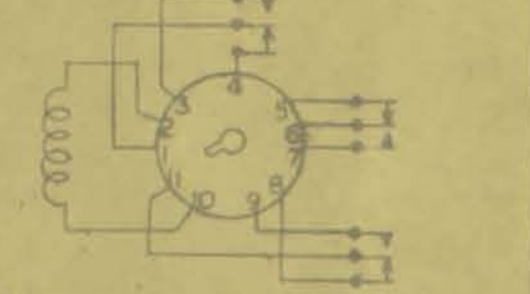
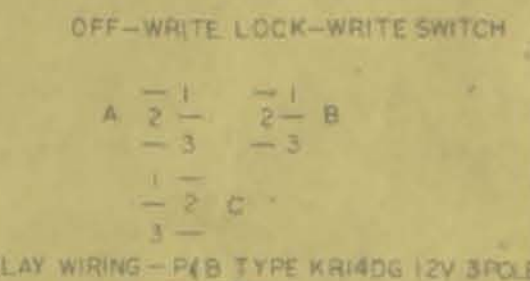
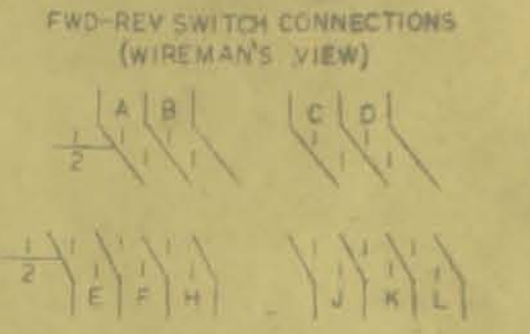
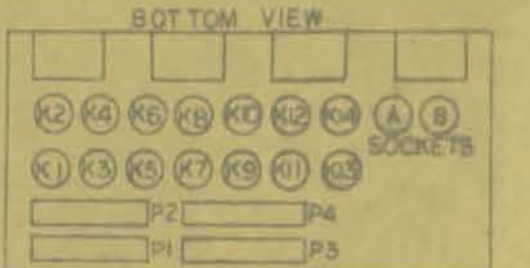
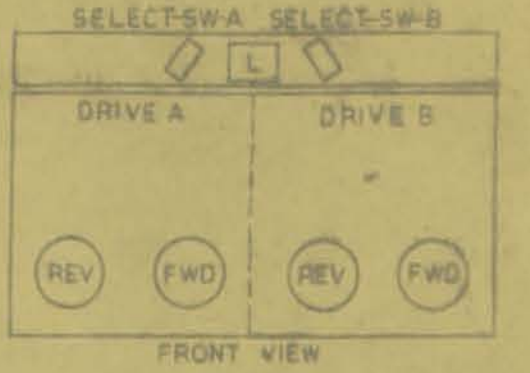
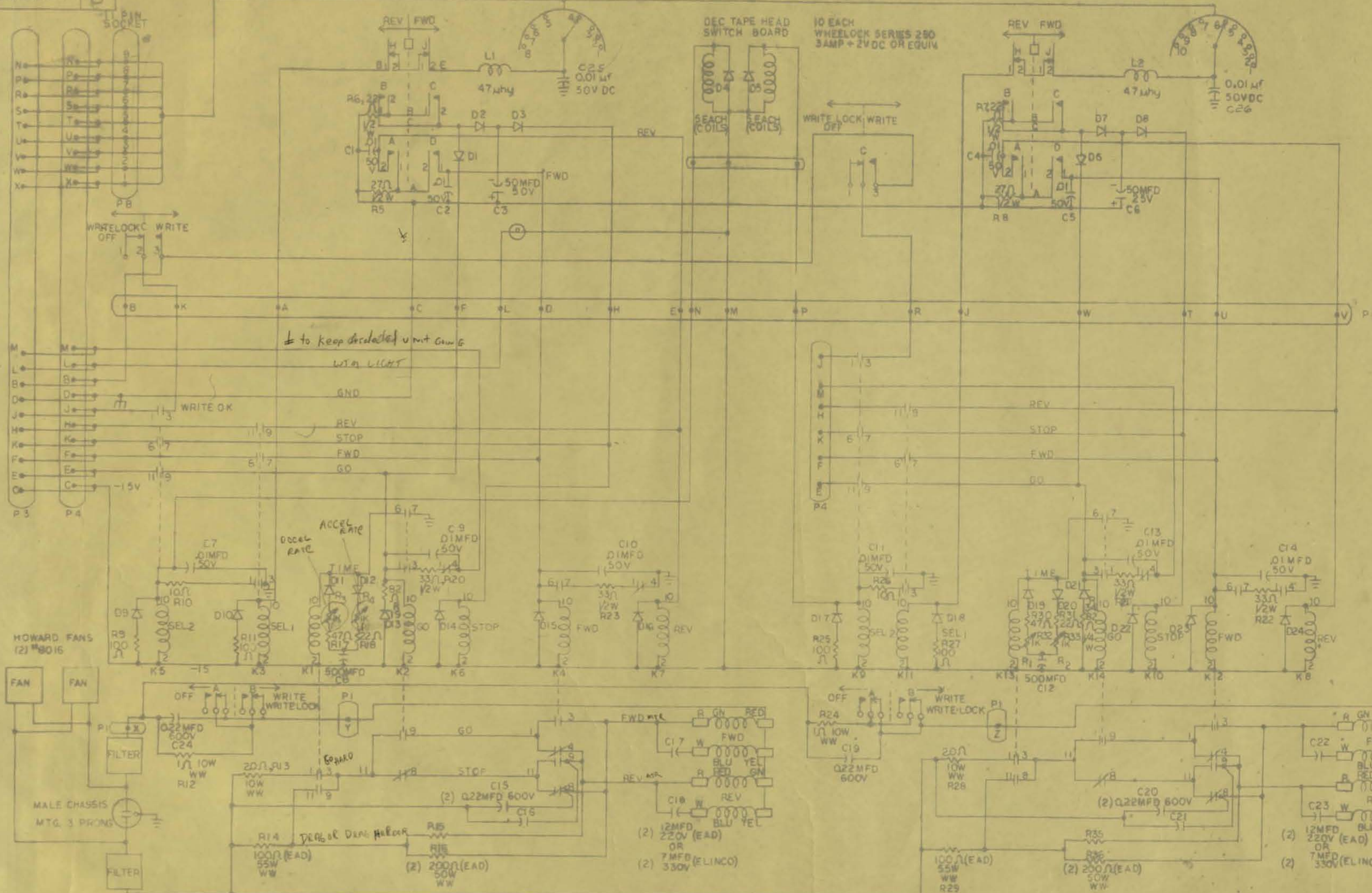
NOTES
 1 (TP4) RW ODD (TUT WRM) (TUT WRITE) (T DATA 1 V 6)

T B M ACTIVE → 2
 T DATA 1(2) A NULL → 0

Z 4127 1A8
BLK RDY(0)

ISSUED
 MAR 31 1965

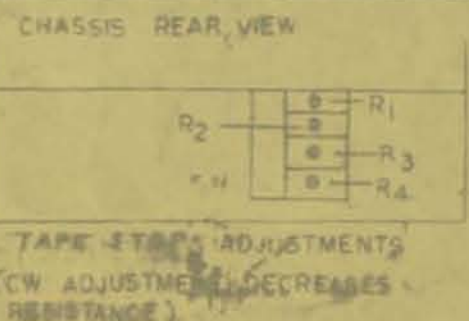
CHANGE A-23 B-89		DATE 4-29-64 1/2/64 1/2/64 1/2/64 1/2/64 1/2/64		digital EQUIPMENT CORPORATION MAYNARD, MASSACHUSETTS		TITLE RWB CONTROL FOR JLT 551 POP-6	
ASSY NO BS	CODE BS	DRWG NO D-551-0-RWEC	SHEET 1	OF 1	REV. LTR B	DATE 4-29-64	DATE 1/2/64



ISSUED
MAY 3 1965

NOTE: ALL DIODES ARE IN1220

NOTE:
R1 SIDE B LONG GO TIME STOP ADJ.
R2 SIDE B SHORT GO TIME STOP ADJ.
R3 SIDE A LONG GO TIME STOP ADJ.
R4 SIDE A SHORT GO TIME STOP ADJ.



REV	DATE	BY	CHKD
0-1	12/30/63		
1	1/11/64		
2	1/21/64		
3	1/21/64		
4	1/21/64		
5	1/21/64		
6	1/21/64		
7	1/21/64		
8	1/21/64		

REVISIONS	DATE	BY	CHKD
0-1	12/30/63		
1	1/11/64		
2	1/21/64		
3	1/21/64		
4	1/21/64		
5	1/21/64		
6	1/21/64		
7	1/21/64		
8	1/21/64		

digital EQUIPMENT CORPORATION MAYNARD, MASSACHUSETTS		TITLE CHASSIS WIRING
FOR DECTAPE 555		CODE CS
ISSY NO	DRWG NO D-25326	REV. 01
SHEET	OF	