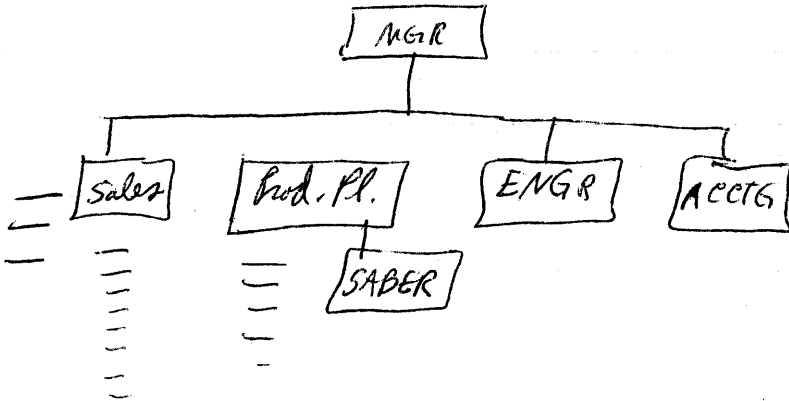


SEPD

Lecture July 28 '58



now ~ 135 engs go to 175 engs

people assigned from each group - work as team.

type - Mag prints (Time + life)

Reservisor - expand to hotel res - credit cards, etc, later

(15K per cc tape)

Hopner - Markel (?) Techniques for data Transmission, - AT&T

650 → 705 } one tel-line  
550 → 650 }

Industrial Controls

Information retrieval: - microfilm, large ~~file~~ file - addressing in terms of keywords

remote source entry:

- Limited Market equip: - optical scanning.

CRT printer - trouble?

Project "Charcoal": personal identification - magnetic card identification - cryptographic switching.

$\frac{1}{3}$  engs  $\frac{1}{3}$  fabrication  $\frac{1}{3}$  materials = regular schedule

SEPD has single engs & fab work