

Configuration	Internal total Compute Speed		Memory factor	Disk-Tape factor	Total figure of Merit, product	Sum
Σ 6 + D + T	1.0	2.22	2.5	$(20)(.95)(.4) = 7.6$	42.0	12.3
- Σ 6 + T	1.0	2.22	2.5	1.1	6.1	5.8
Σ 4 + D + T	0.9	2.0	2.0	$(20)(.85)(.4) = 6.8$	27.2	10.8
- Σ 4 + T	0.9 0.9	2.0	2.0	1.07	4.3	5.1
→ Σ 2 + D + T	0.78	1.73	1.4	$(20)(.75)(.4) = 6.0$	14.5	7.1
- Σ 2 + T	0.78	1.73	1.4	1.03	2.5	4.2
Σ 1 + D	0.45	1.0	1.0	$(20)(.45)(.4) = 3.6$	3.6	5.6
- Σ 1 + T	0.45	1.0	1.0	1.0	1.0	3.0

"Figure of Merit"

No Memos	Tape system		Disk system	
1	1.0	1.0	3.6	1.9
2	2.5	1.4	14.5	3.0
4	4.3	1.7	27.2	3.6
6	6.1	1.9	42.0	4.1

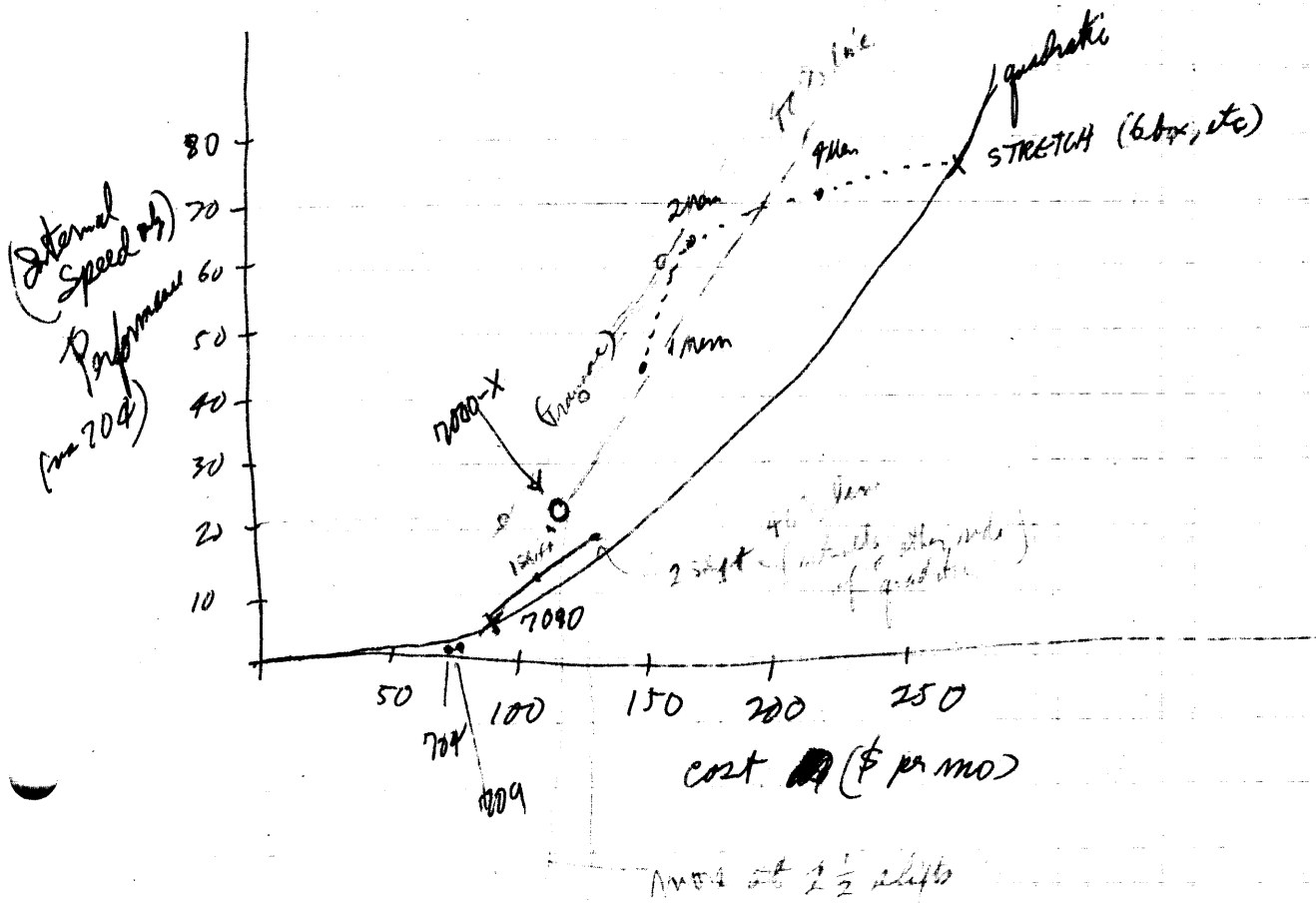
Handed to
D. Newton
Apr 23, 59

"1.0" is $\begin{cases} 5 \times 709 \text{ for logic + tape passing} \\ 9 \times 709 \text{ for arithmetic} \end{cases}$

← (5) (7)
?

7000-X

D. Newton



→ Plot these points accurately
 May 4th will know more accurately
 [need performance vs 704 more accurately]

→ Send Newton a report

System	Internal Speed	Cost Factor	Performance Factor	Composite Performance
7000-X				
1A				
2A				
7090				

(Mention separate I/O equip)