

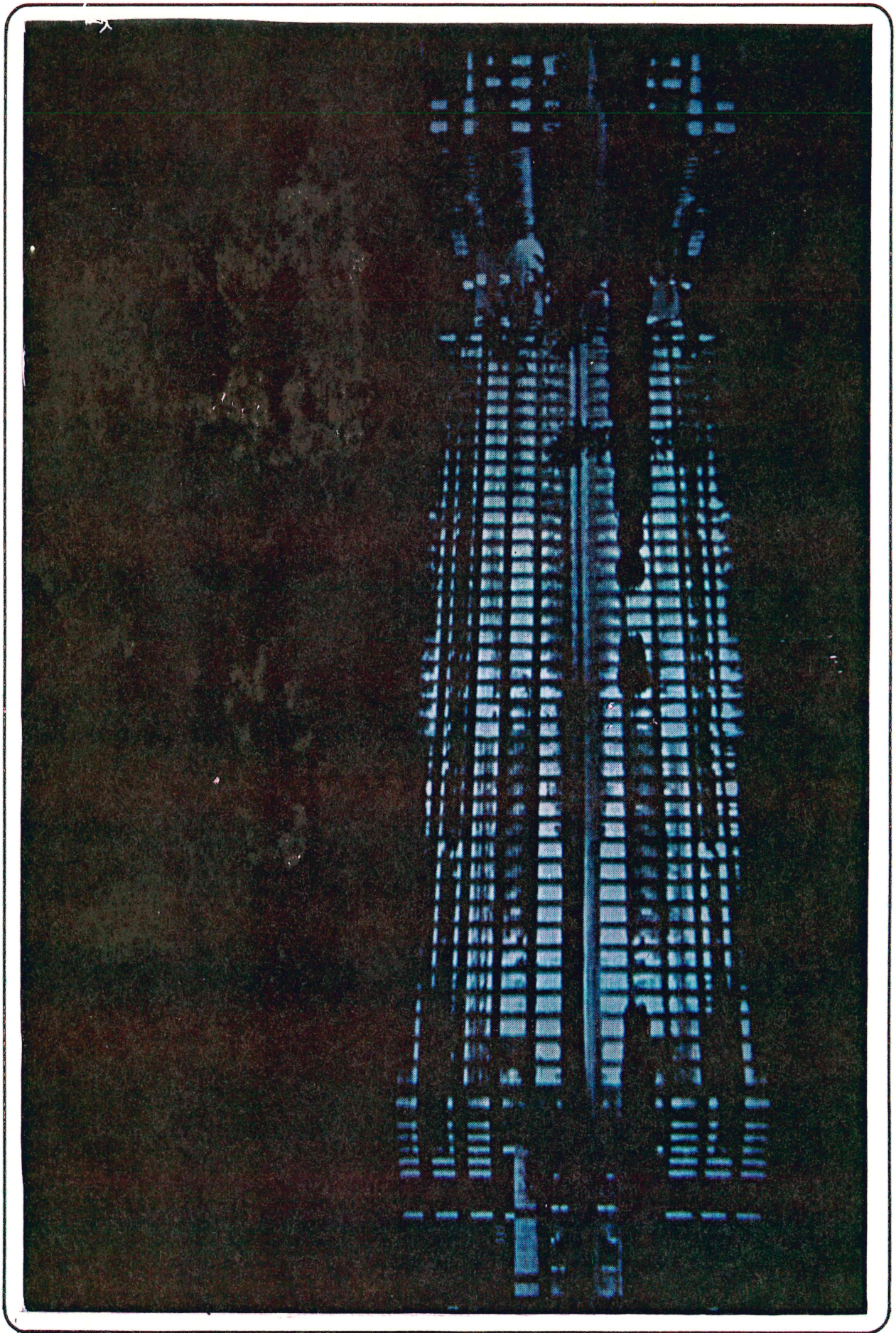
ABUQUERQUE  
9020-51-5



GALWAY 6977-1-5



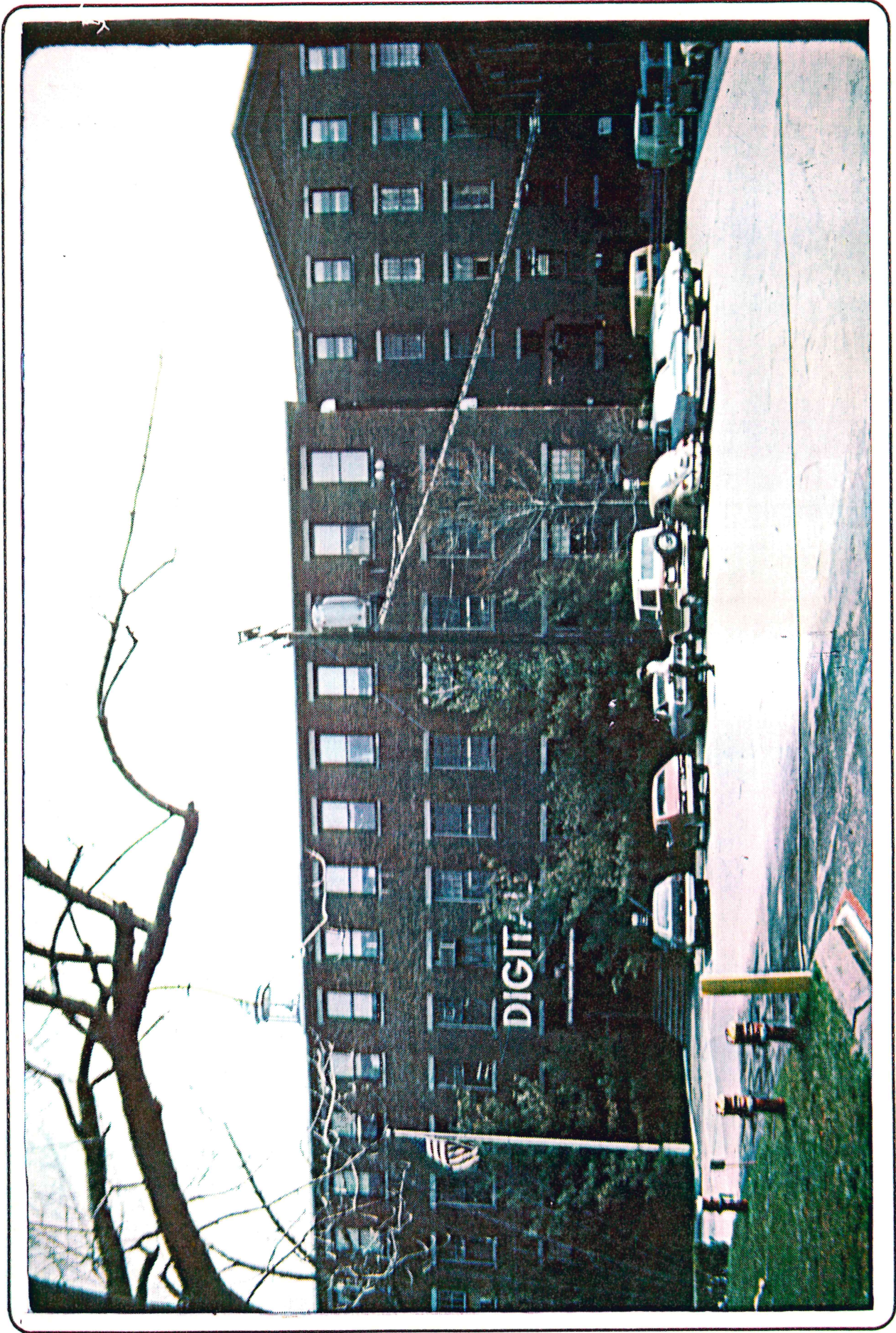
MILL



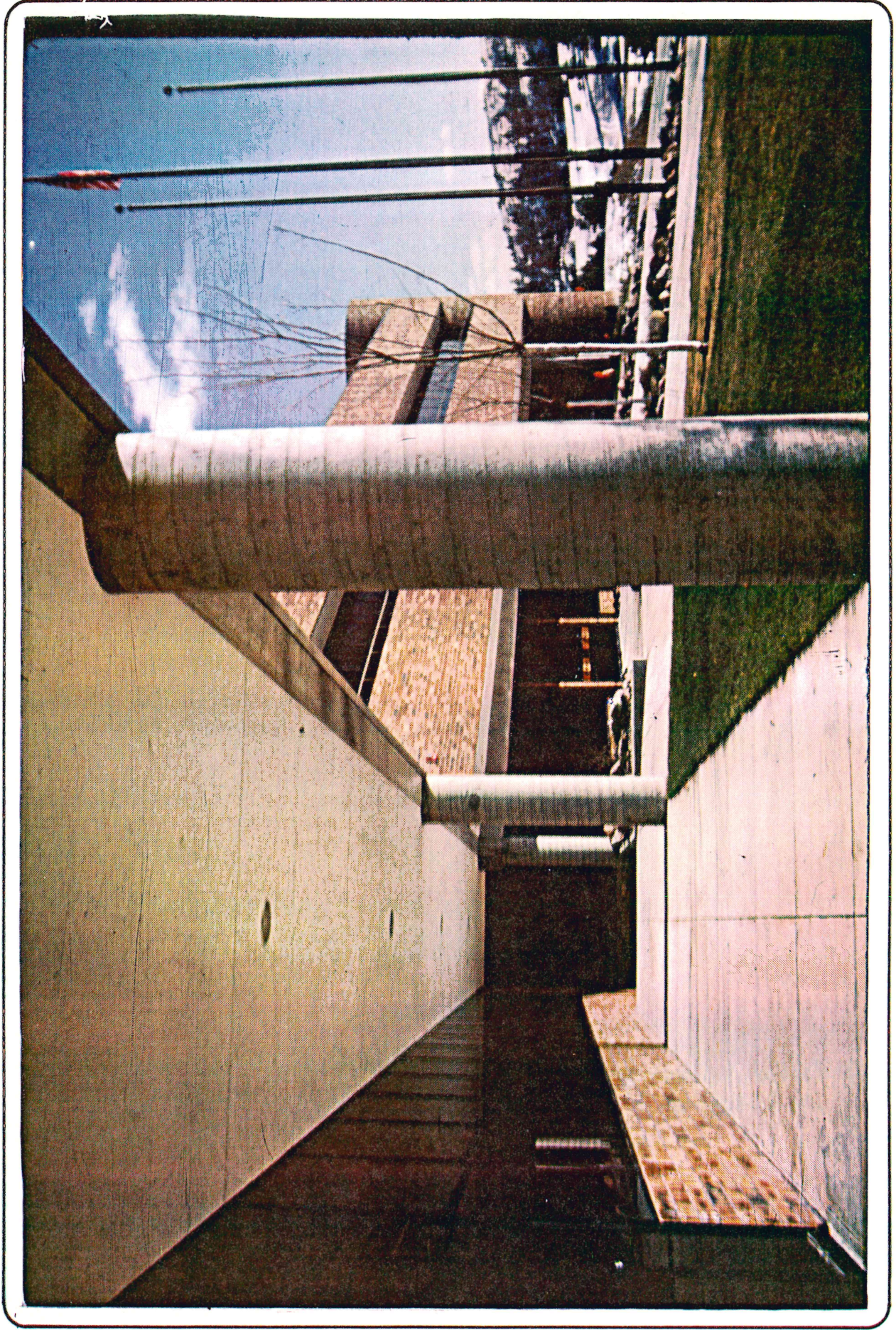
MERRIMACK 9106-8-5 JAN, 1978



MILC 8575-23-S



Colorado Springs 9589-39-5





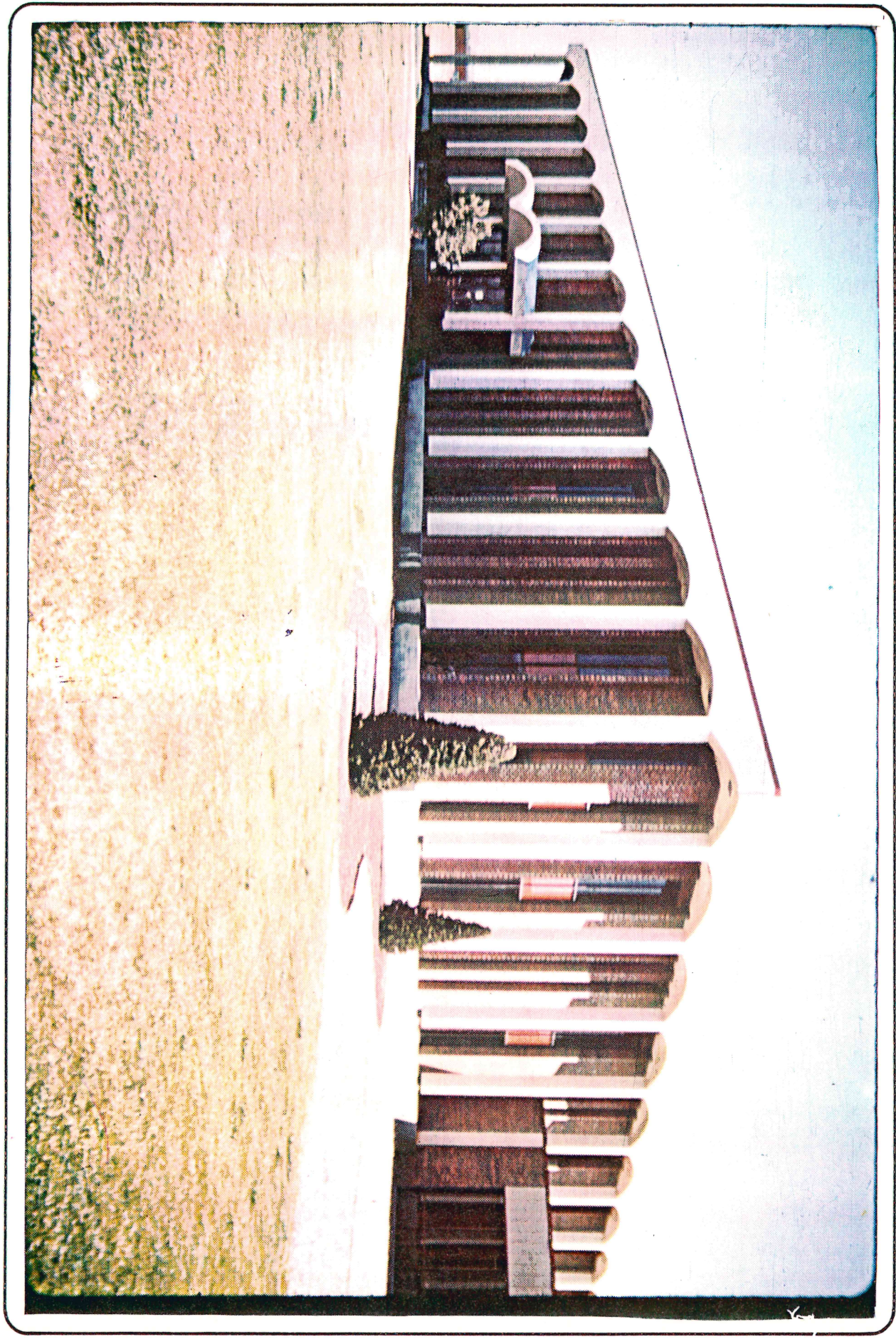
MEREWACK M159-41-5

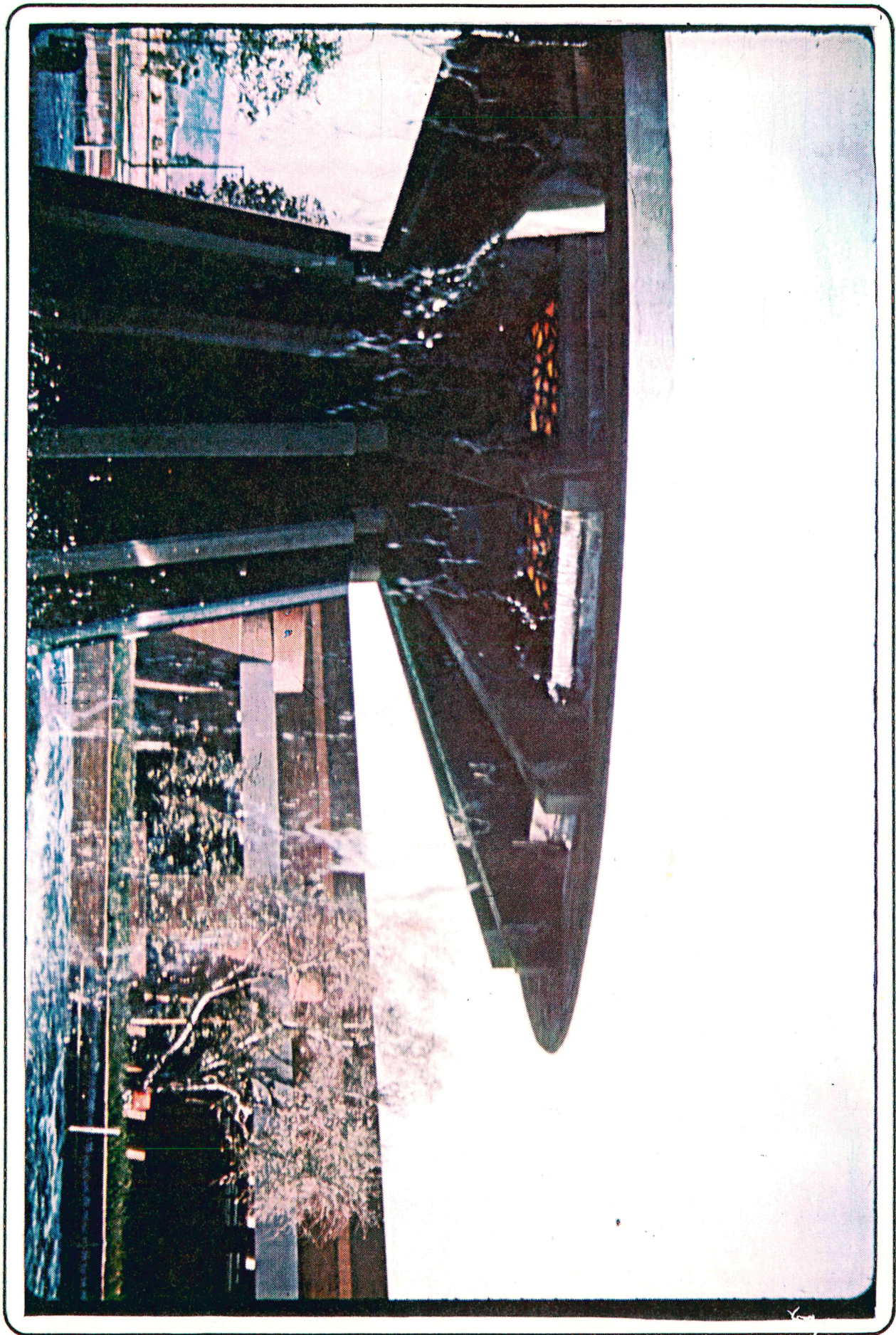


Calderlands Spgs 9589-44-5



AURUSQUARE E 728-97-57





8728-G-ST  
Phoenix

9021-115-5 PHOENIX



9021-106-5 PHOENIX

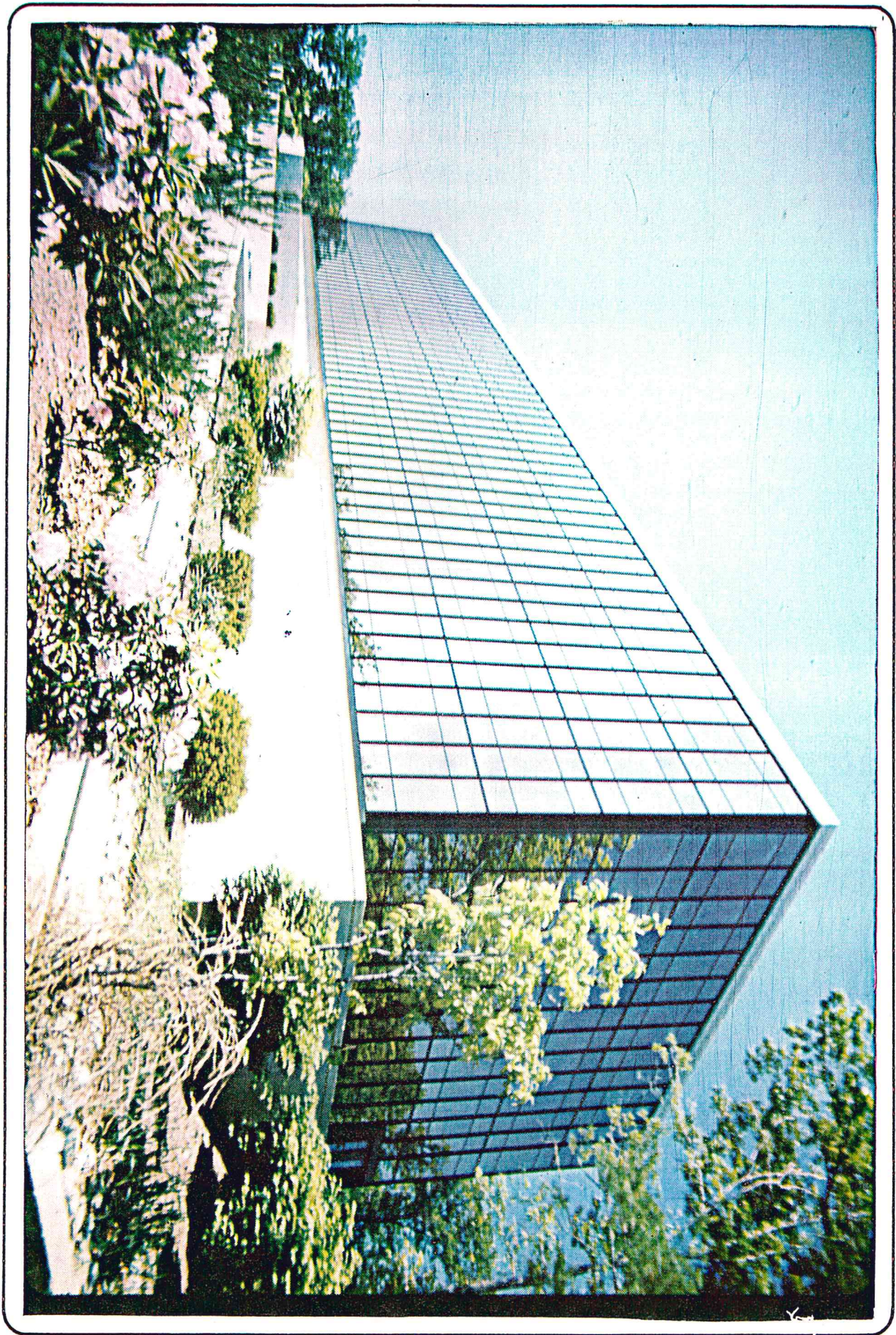




9021 - ~~108~~ - 5 PHOENIX  
141

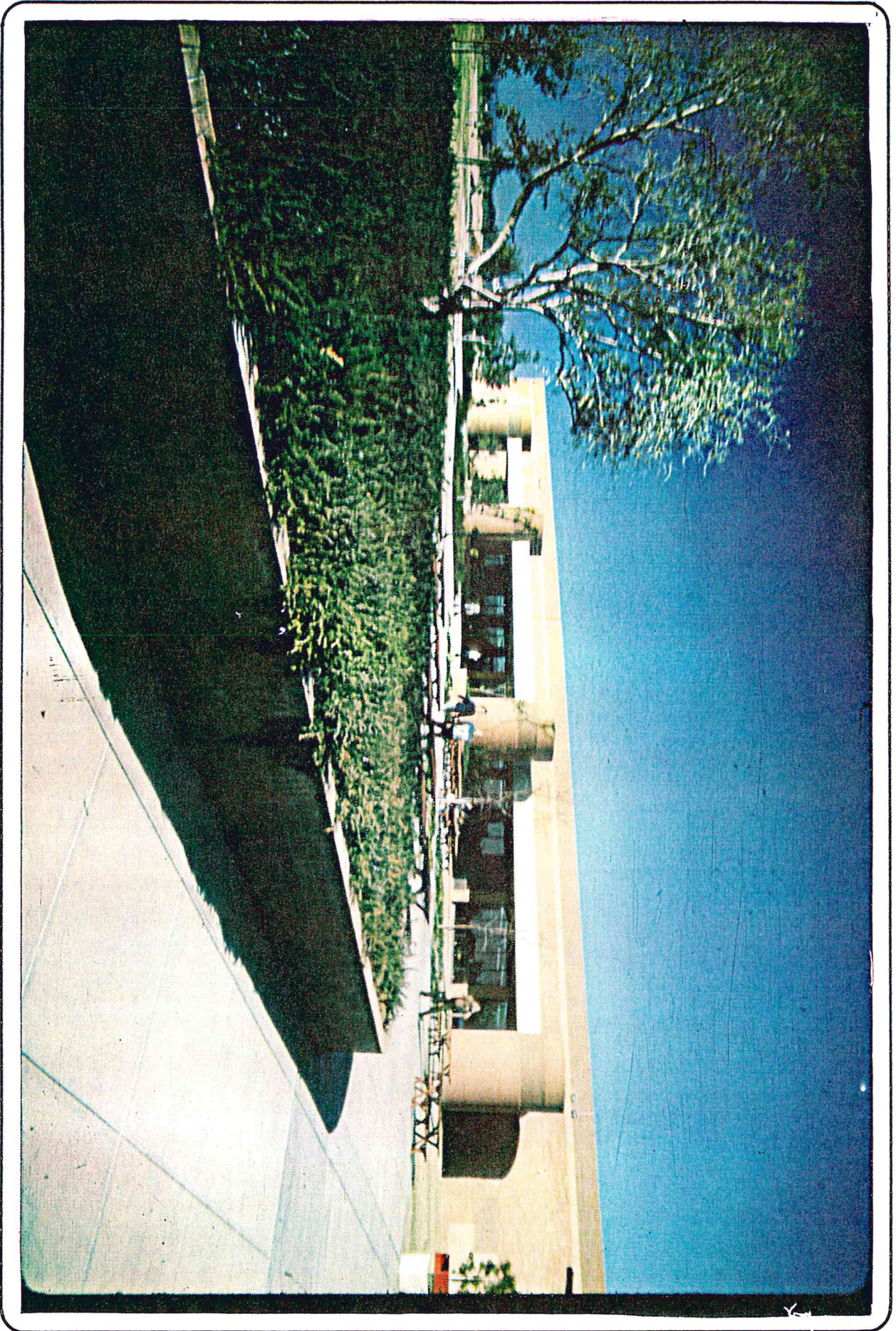
Malabar 6/77

8577-35-5



9021-113-5

PHOENIX



9021 - 166-5 PHOENIX



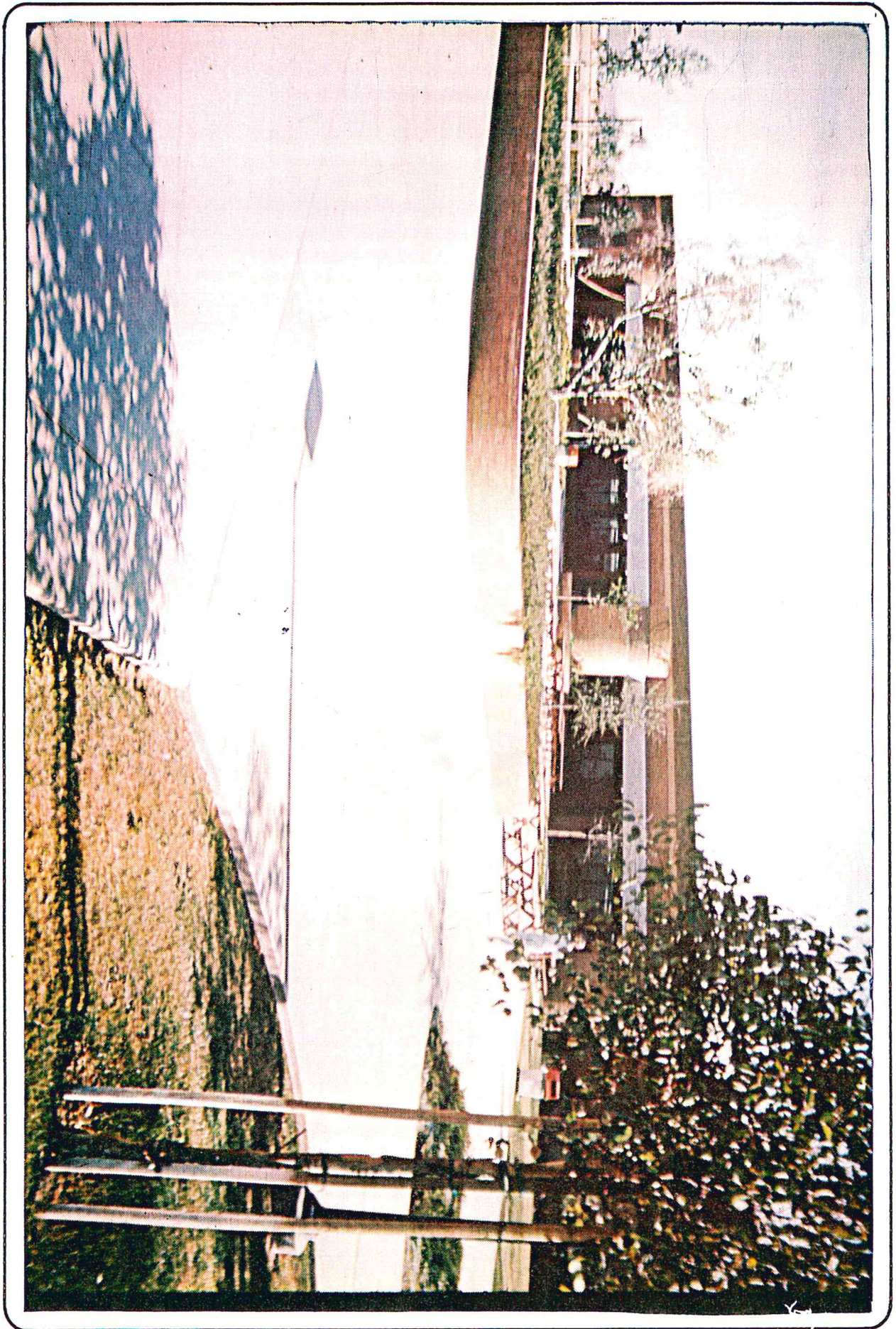


87. 8728-135T



8728-46-ST

PHOENIX

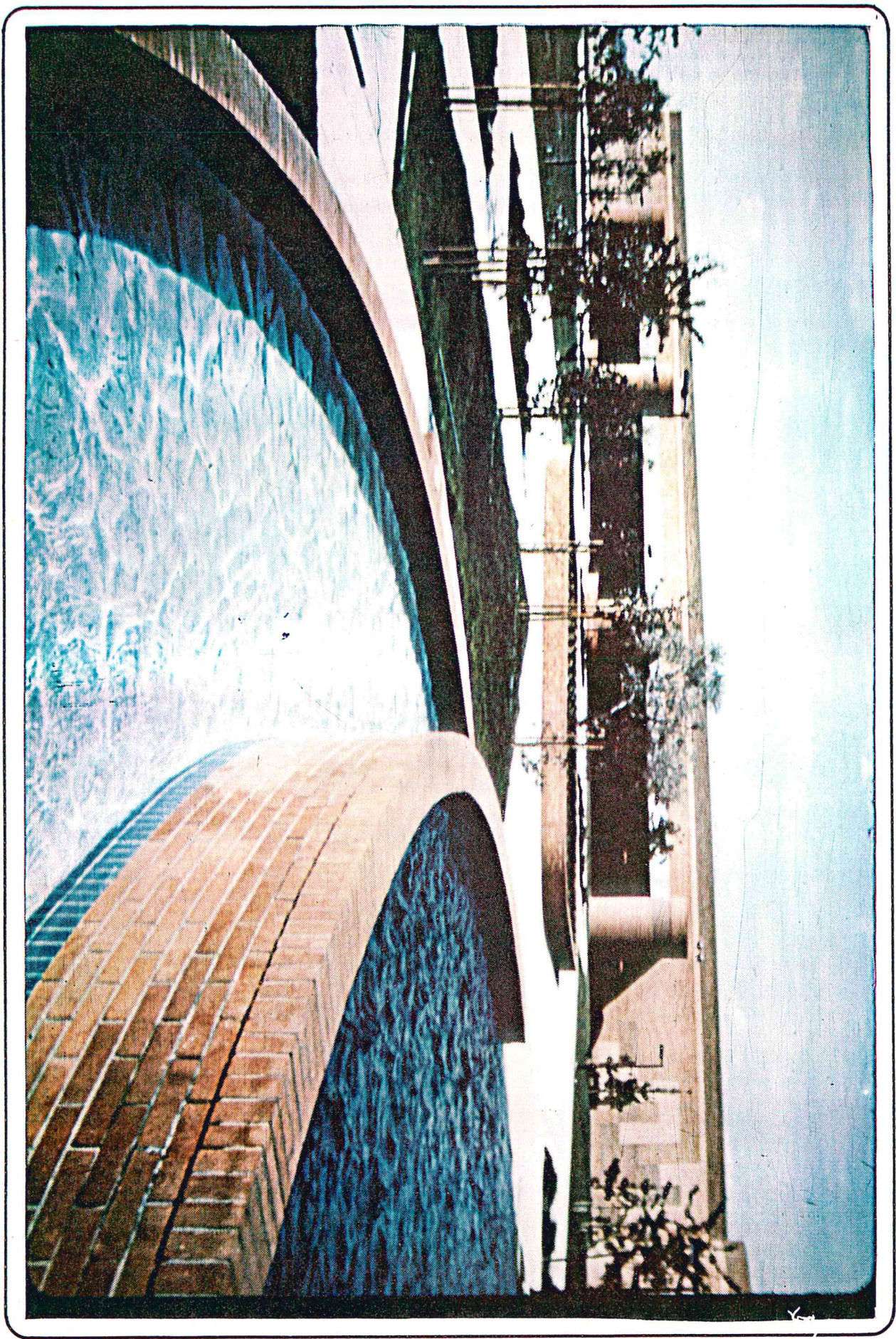


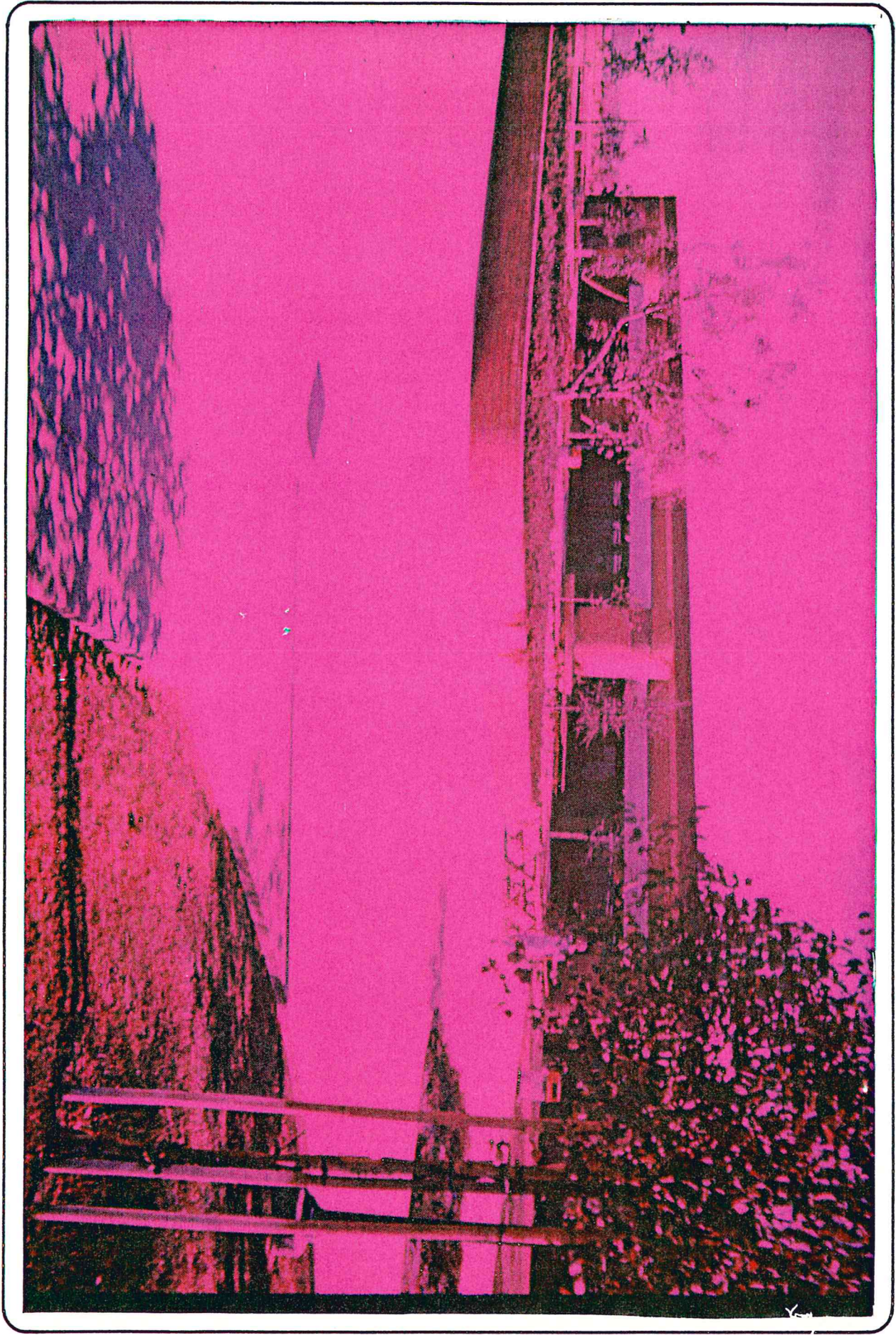
PHOENIX 1 1976



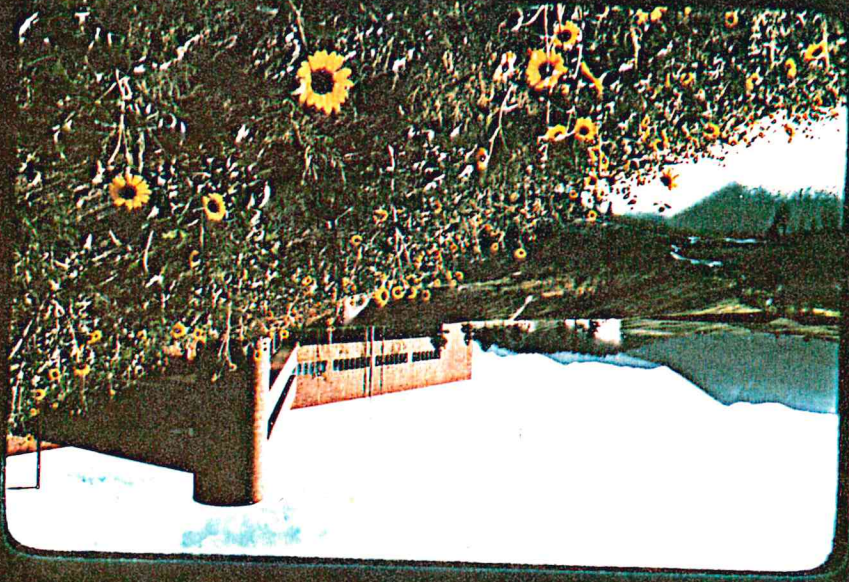
PHOENIX  
1976

§235-2-5





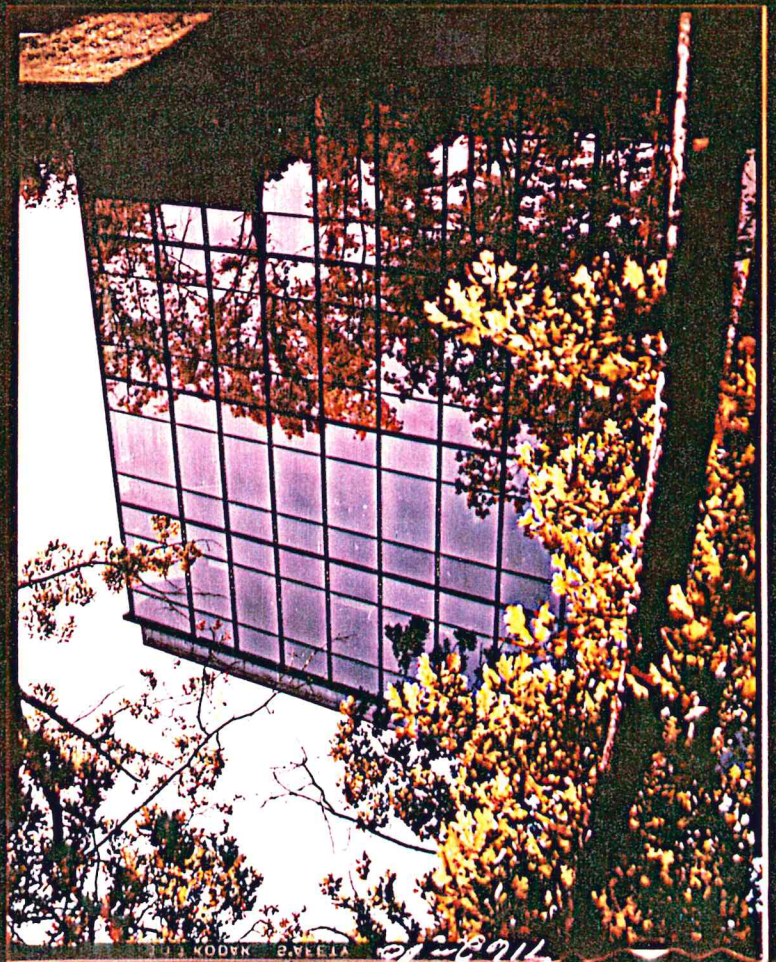
9589-66-C



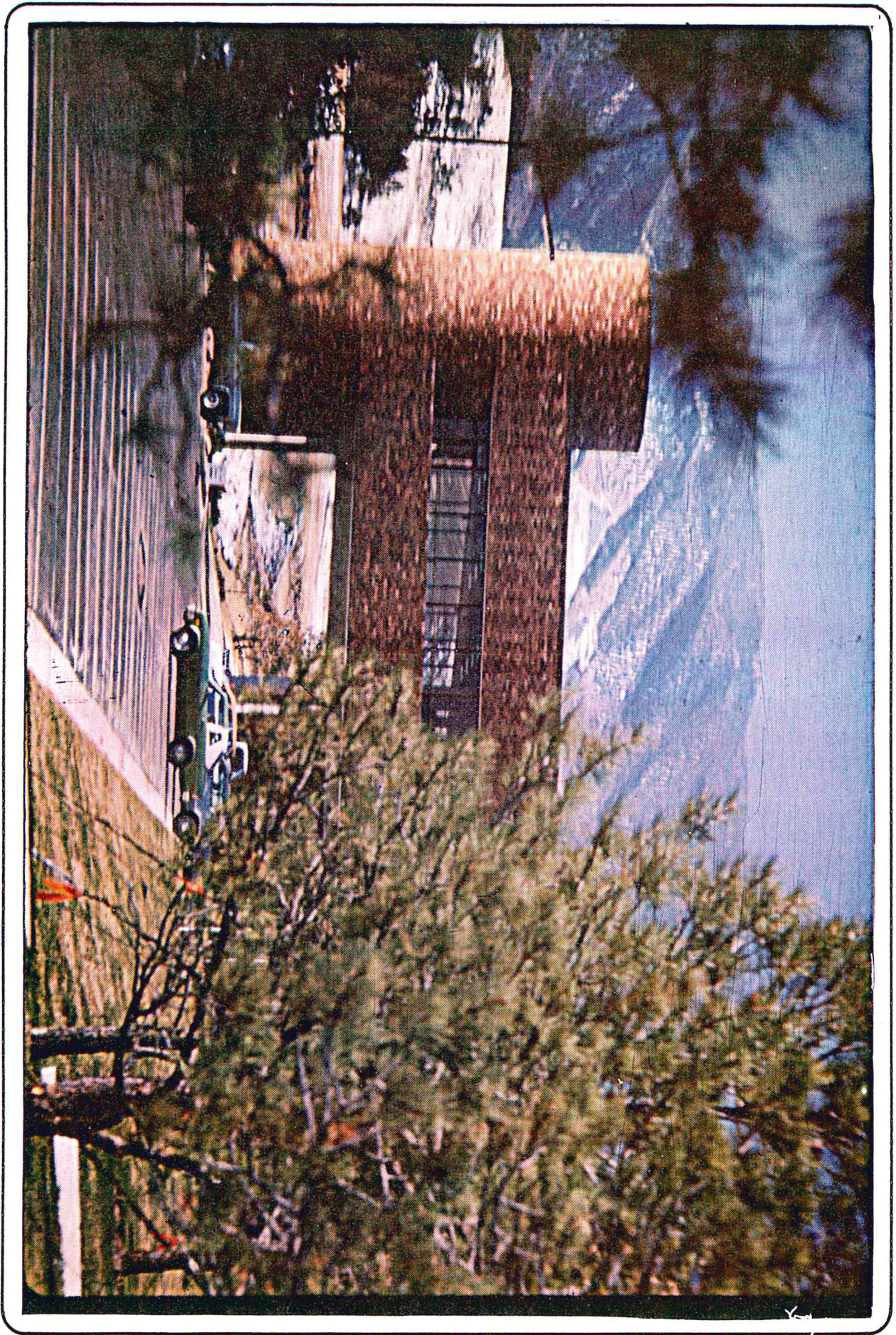
9589-49-CIS



11692



11692-16  
KODAK SAFETY FILM



Cerro Colorado Springs 9589-46-5 (R)



ASTON 8575-37-5

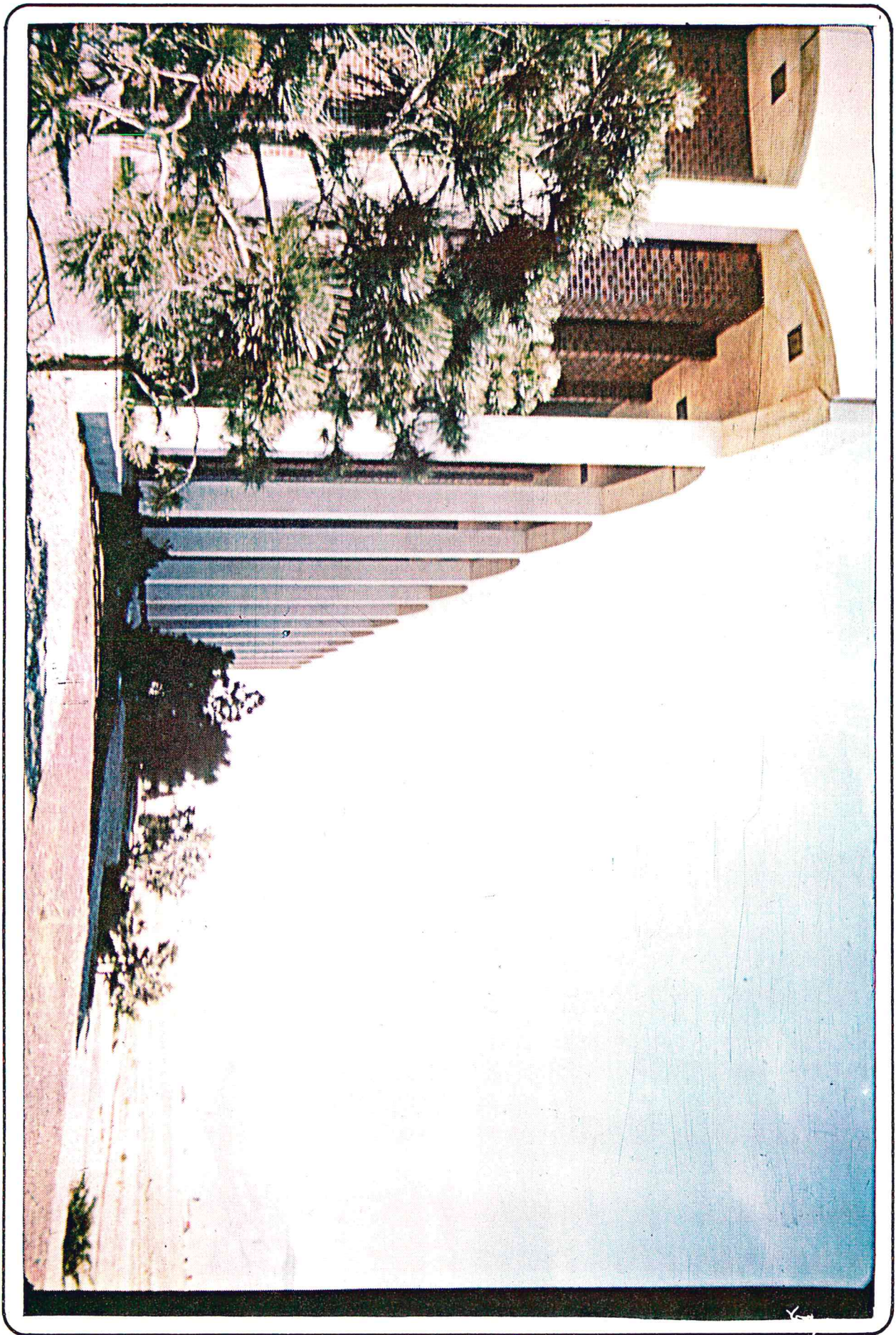
Spring 77



ARBUCKLE QUAY

P728

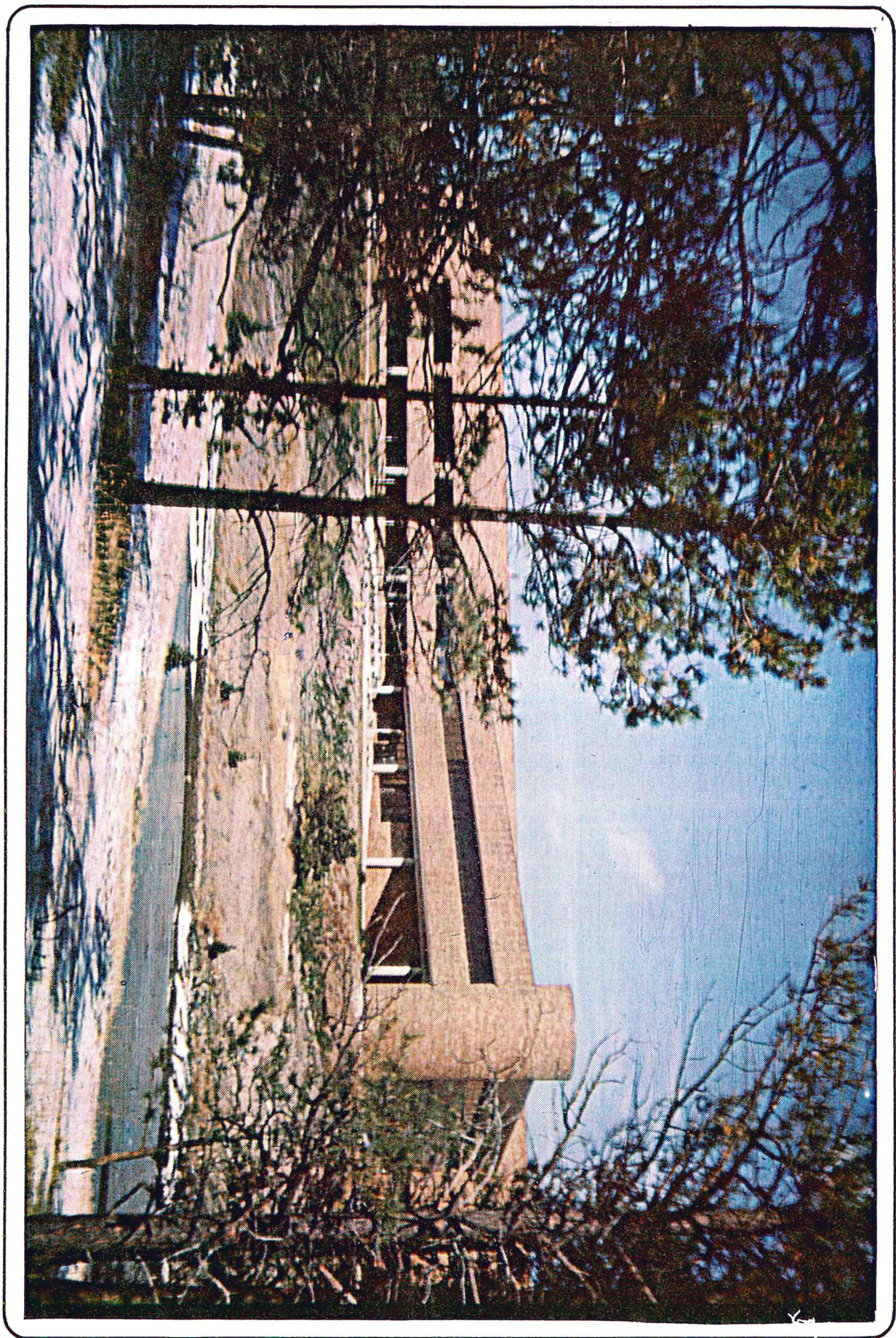
-184-57



AQUEDILLA 7987-4-5



Casavado 9589-1-5 Run



WATK 6587-1-S



facility summit, Calif



7042-4-T



9021-108-5  
12/1

PHOENIX



SAN GERMAN, P.R.

7987-1-5

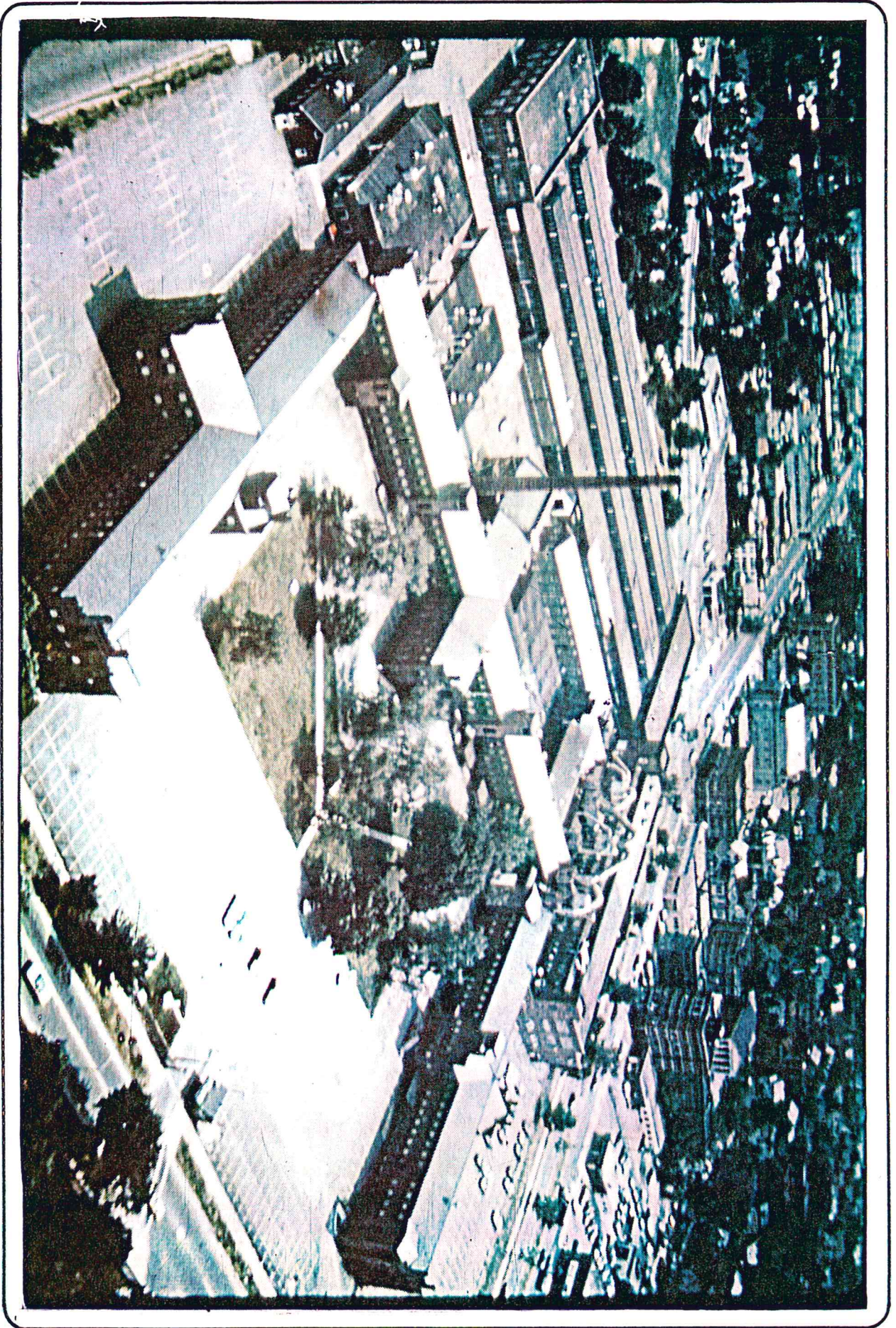
1976







WESTMINSTER 1976



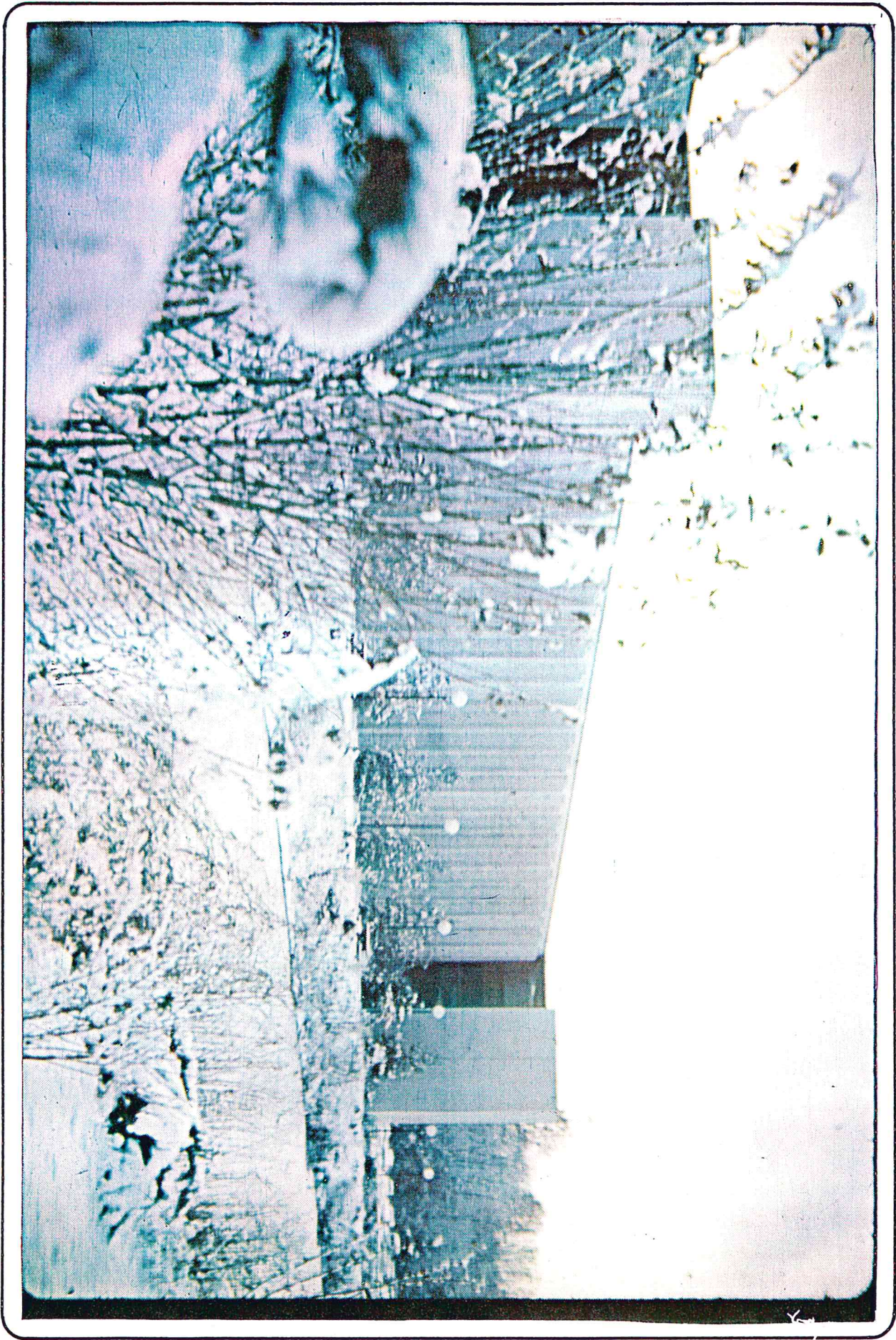
Springfield 6720-7

NASHUA

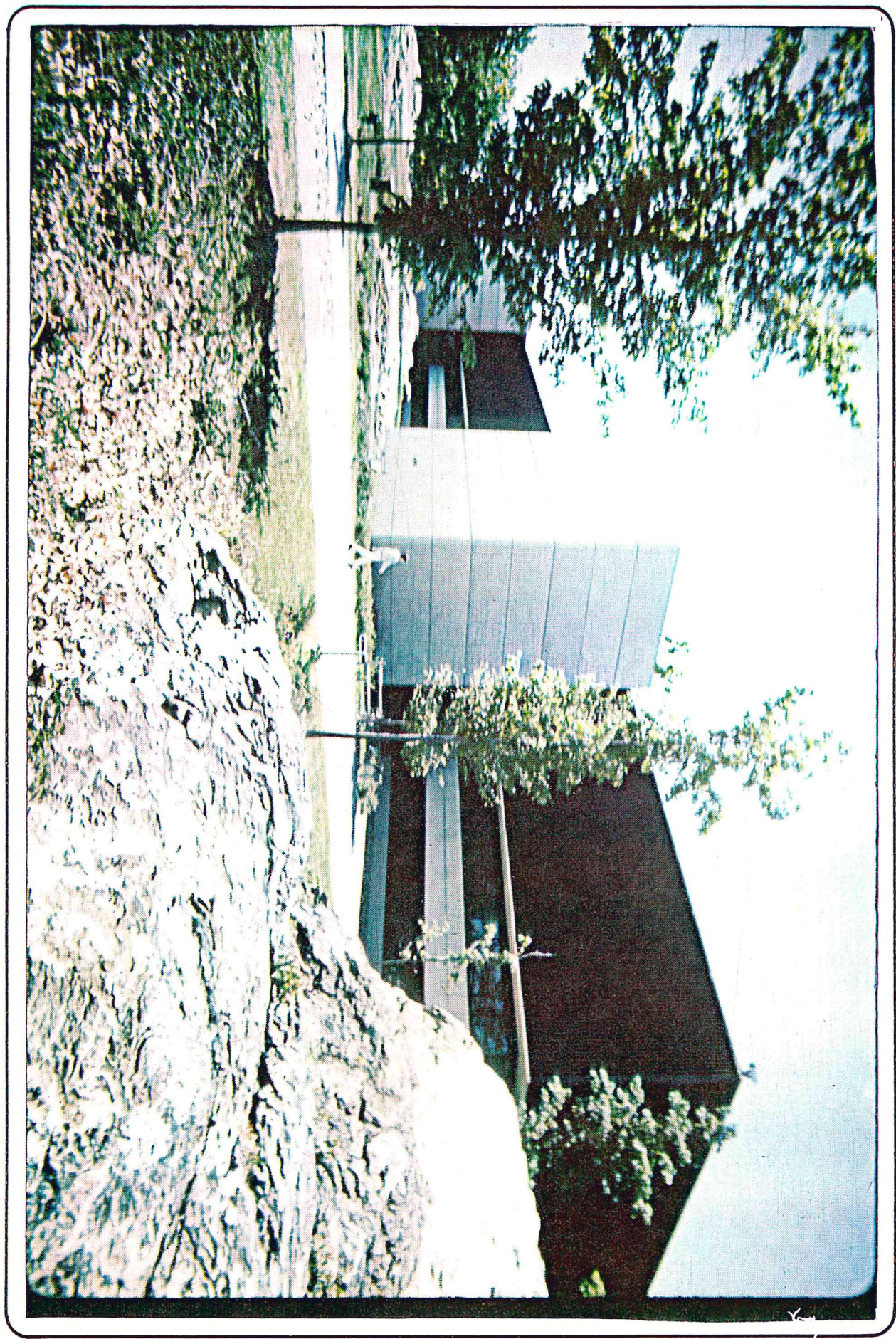
8238-27-5



Palmer St. 8288-1-5 N "72"



WALCROCK 8577-15-5 6/77



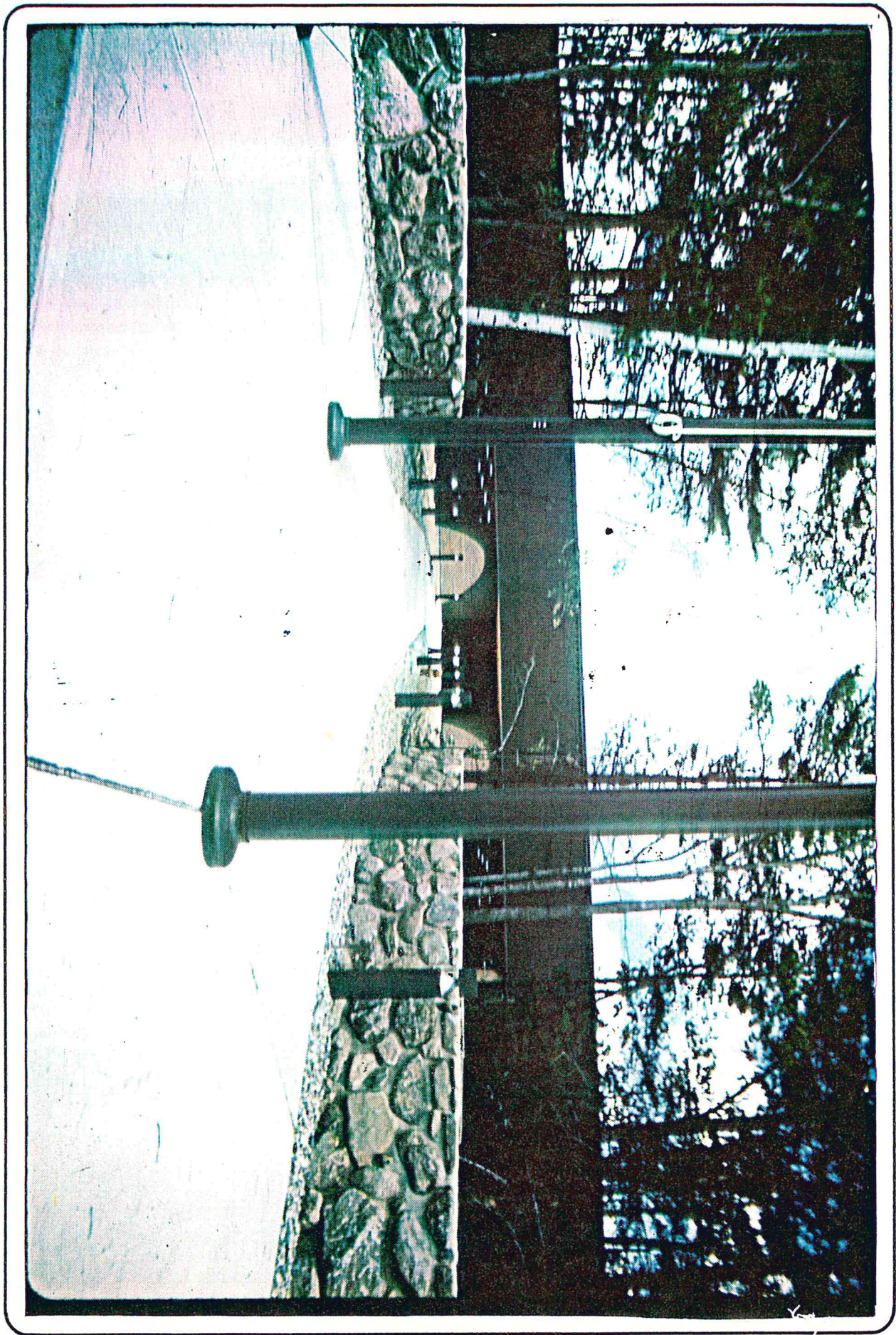
ALBUQUERQUE 8728-125-57



SALEM

8781-29-5

9/77



8877-50-6

maelby



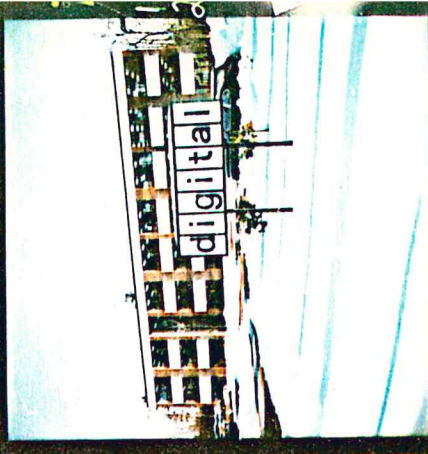
8571



1807



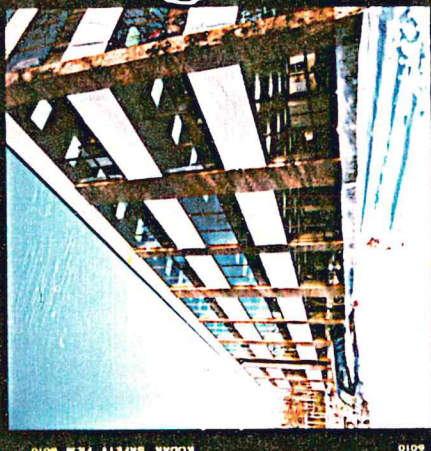
1808



1806



1805



1804



1806

KODAK SAFETY FILM 6010

8137-1



*60000 sq ft  
 100 ft long  
 10 ft wide  
 10 ft high*

8137-1



8137-1