

Dr. Logo™

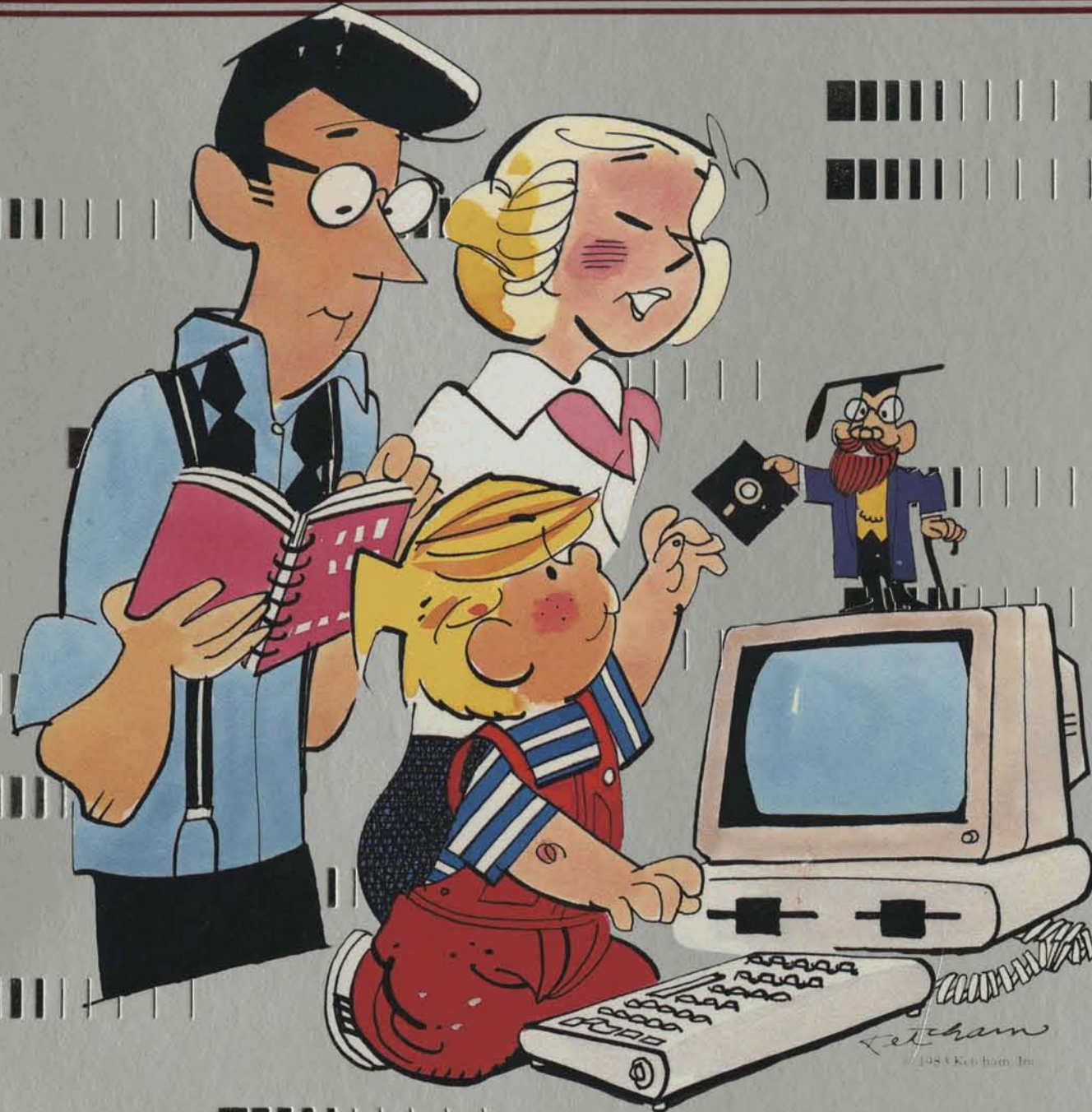
with SpeedStart™

The Programming Language
specifically designed
for the IBM® PC

DIGITAL
RESEARCH™

Dr. Logo™

with SpeedStart™



DIGITAL
RESEARCH™

Dr. Logo™

with SpeedStart™

The Programming Language specifically designed for the IBM® PC from the CP/M Library.™

DIGITAL RESEARCH™

The world's easiest to learn programming language for the IBM PC.

Introducing Dr. Logo. It's the advanced learning language that transforms the mystery of computer programming into a simple, painless experience.

Ideal for first-time IBM PC

users of all ages. Dr. Logo is based upon a distinctive, educational philosophy: you learn by doing. Through friendly interaction with the computer, Dr. Logo users learn to write programs in record time. Beginners can sit down and actually start

programming during their first session.

Yet despite its simplicity, Dr. Logo is the only Logo language powerful enough to handle the full spectrum of computer programming: from simple, "turtle graphics" procedures, to practical business applications,

on through to the creation of complex, artificial intelligence programs.

In short, Dr. Logo is the only computer language you and your family will ever need. It's remarkably easy to learn. And best of all, no programming experience is required.

Features	Benefits
<input type="checkbox"/> Comprehensive tutorial	This informative, easy-to-follow tutorial guides the first-time programmer through each step of learning how to use Dr. Logo.
<input type="checkbox"/> Turtle graphics	An electronic "turtle" gives you complete control over creating graphics on-screen; an indispensable learning aid for first-time users, yet powerful enough to generate technical graphics for scientists and engineers.
<input type="checkbox"/> Powerful debugging facilities	Allows users to watch program execution on a split screen; program "bugs" can be located quickly and easily.
<input type="checkbox"/> Informative error messages	If an error occurs, Dr. Logo instantly alerts the user with informative easy-to-understand messages; changes can be made quickly.
<input type="checkbox"/> Large workspace	Allows user to write large programs without running out of space.

Features	Benefits
<input type="checkbox"/> List processing	Enables user to create lists, write educational programs, create word games, and write advanced data-base programs; ideal for both home and business use.
<input type="checkbox"/> Double precision, floating point math capability with 15-digit accuracy	From simple math problems to complex trigonometric and logarithmic problem solving, users can use Dr. Logo as an efficient mathematical calculator.
<input type="checkbox"/> Sophisticated workspace management	Allows users working on large programming projects to keep track of and modify the structures of their procedures.
<input type="checkbox"/> Comments and indentation in procedures	This capability lets users write procedures that are presented in an easier-to-understand format.

SpeedStart

The exclusive load-&-go software system. SpeedStart CP/M™ is a version of the CP/M-86™ operating system which is built into this application software. All you have to do is load a single disk and you're ready to go to work!

SpeedStart CP/M eliminates the time-consuming task of loading a separate operating

system disk, waiting for the computer to become fully operational and then reloading with the application software. With SpeedStart CP/M pre-installed, no time-consuming "installation" of your new software is necessary. Just load and go!

SpeedStart CP/M gets you to work faster... without burdening you with the details of an operating system.

Hardware/Software requirements

- IBM PC with 192K-256K RAM.
- At least one floppy disk drive.
- IBM Color Graphics Display Adapter.

- Optional IBM Monochrome Display Adapter and IBM Monochrome Display.
- Graphics display.

IBM is a registered trademark of International Business Machines Corp. The Dennis characters are registered trademarks of Hank Ketcham Enterprises, Inc. The logo, Dr. Logo and the Dr. Logo character are either trademarks or registered trademarks of Digital Research Inc. © 1983 Digital Research Inc.

DIGITAL RESEARCH™

Dr. Logo™
with SpeedStart™