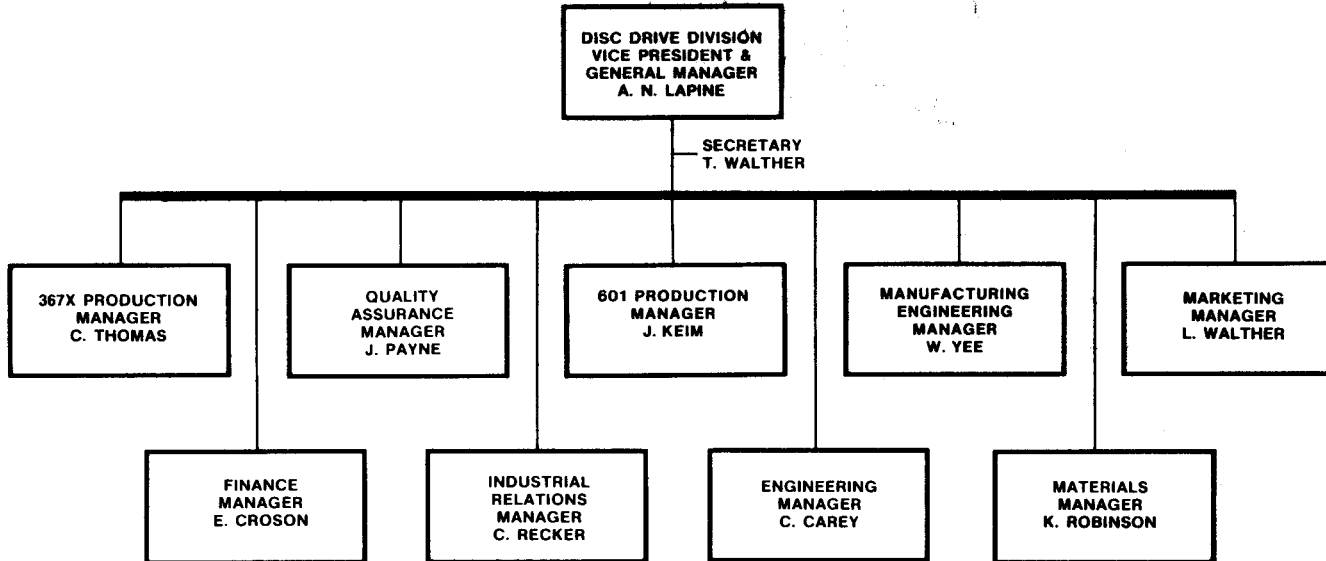


DISC DRIVE DIVISION ORGANIZATION 7/1/80



367X PRODUCTION ORGANIZATION 7/1/80

367X ASSEMBLY
MANAGER
C. THOMAS

SECRETARY
J. DEL POZZO

367X TEST
MANAGER
J. MARSHALL

ADMINISTRATION
L. WHITLOCK

367X ASSEMBLY
MANAGER
L. MARTIN

P. BERRITO
Clerk

3671

367X TEST
SUPERVISOR
(DAY)
D. COX

3676

SHIPPING
SUPERVISOR
L. SNELL

3672

367X
FINAL ASSEMBLY
SUPERVISOR
J. RAHN

3674

367X MECHANICAL
ASSEMBLY
SUPERVISOR
(DAY)
S. STATON

3675

367X ELECTRONIC
ASSEMBLY
SUPERVISOR
(DAY)
L. HERNANDEZ

3674

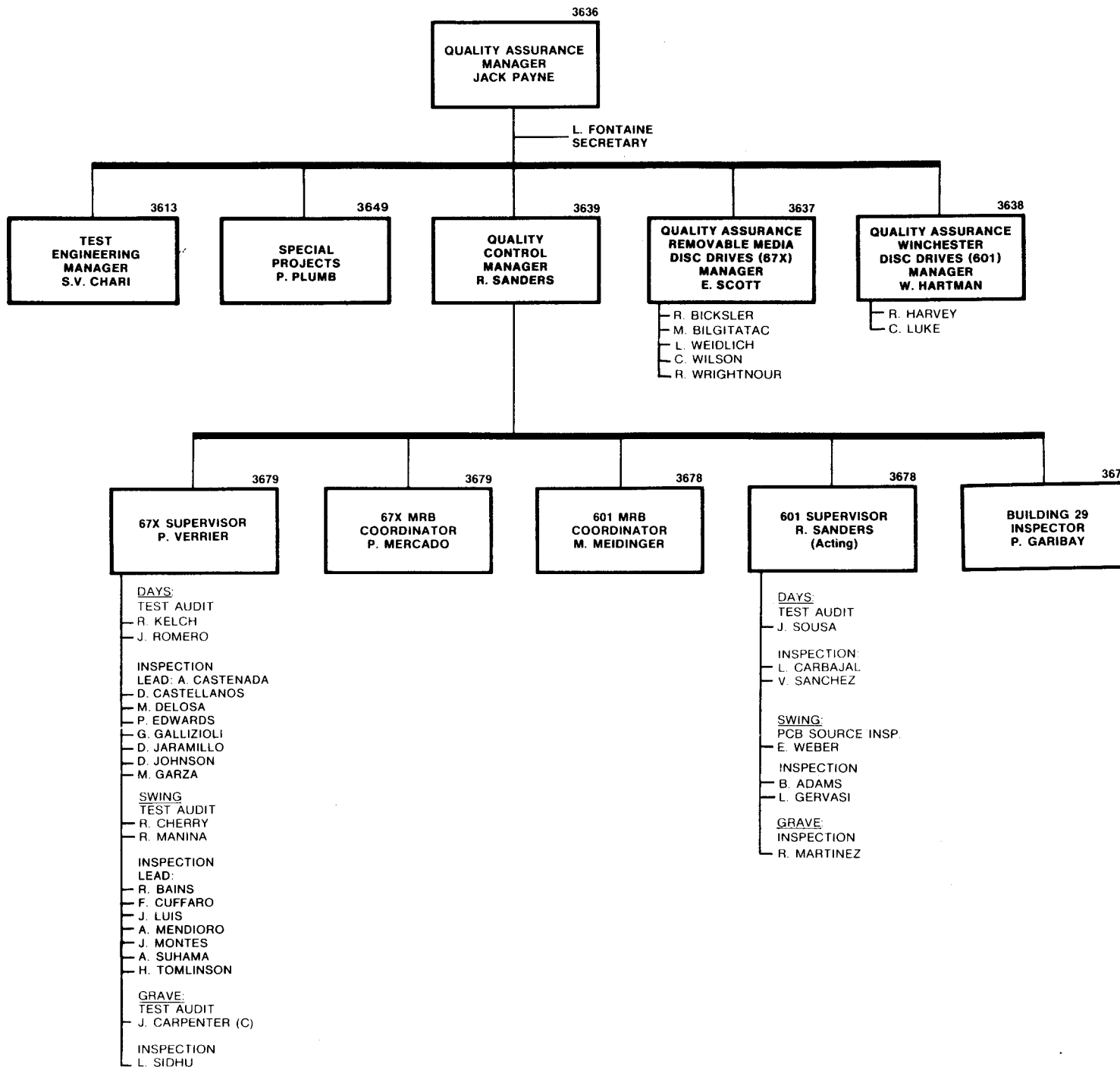
367X MECHANICAL
ASSEMBLY
SUPERVISOR
(SWING)
G. TREADAWAY

3674

LINEAR MOTORS
AND BOBBINS
SUPERVISOR
(SWING)
G. TREADAWAY (Acting)

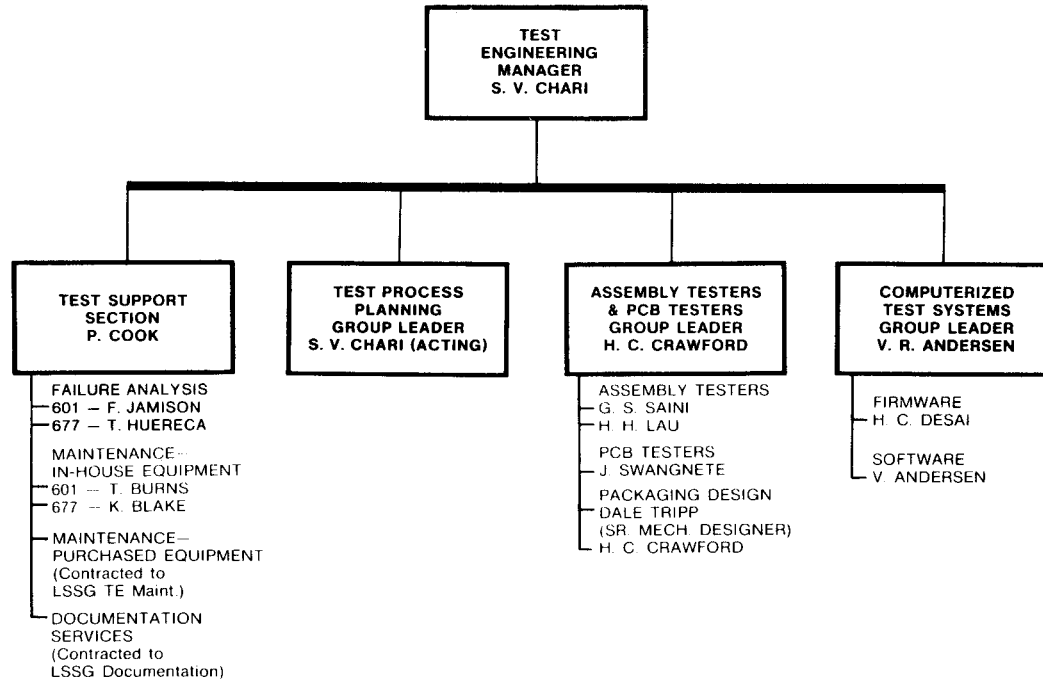
367X TEST
SUPERVISOR
(SWING)
D. EATMON

367X TEST
SUPERVISOR
(GRAVE)
R. HEDGES

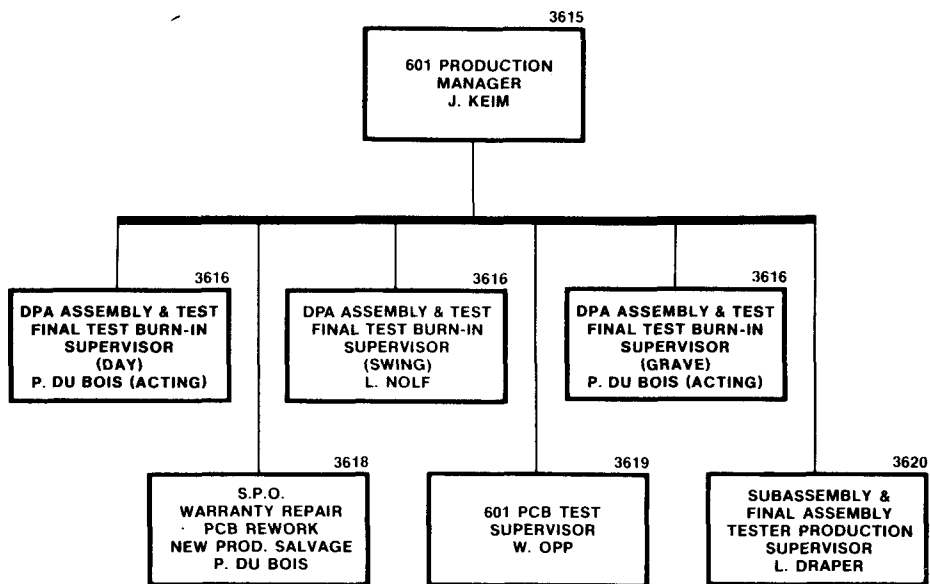


QUALITY ASSURANCE ORGANIZATION 7/1/80

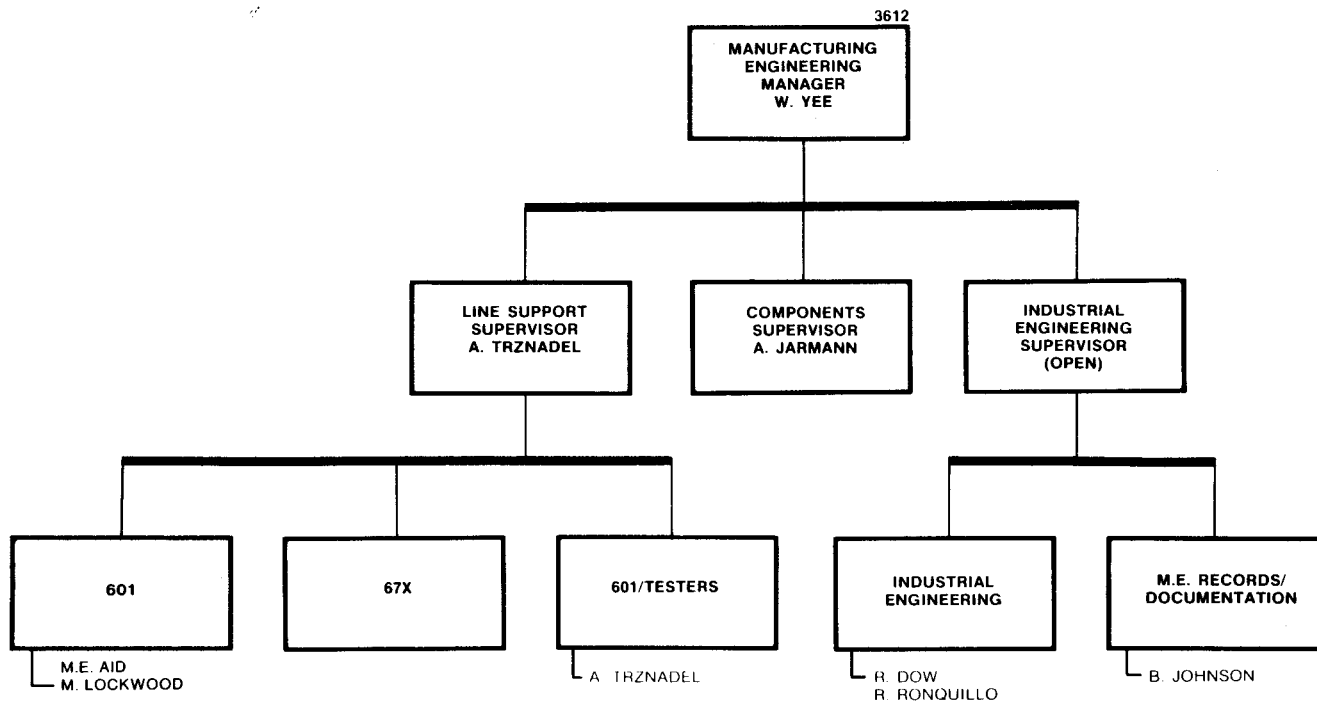
3613



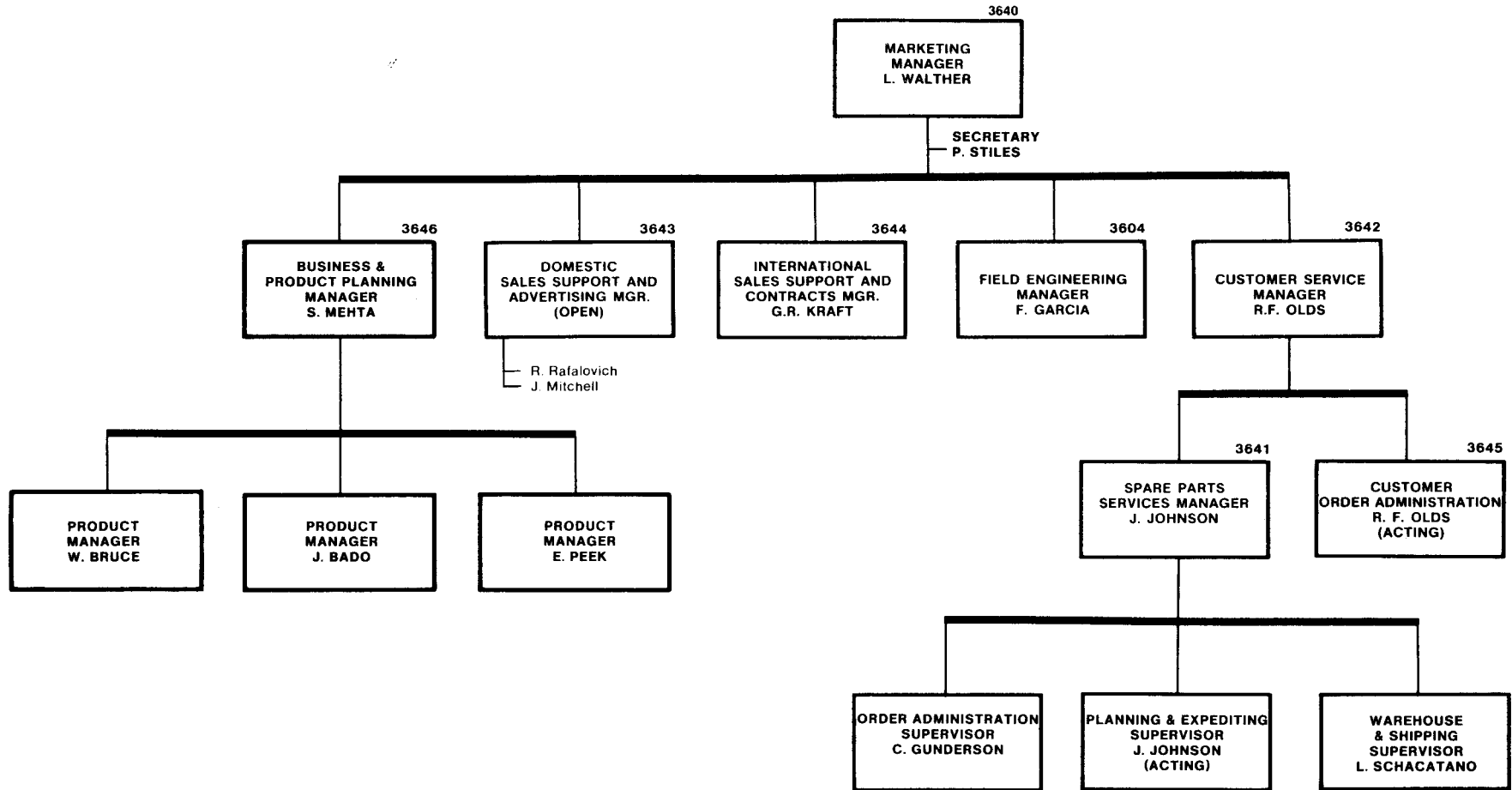
MANUFACTURING ORGANIZATION 7/1/80



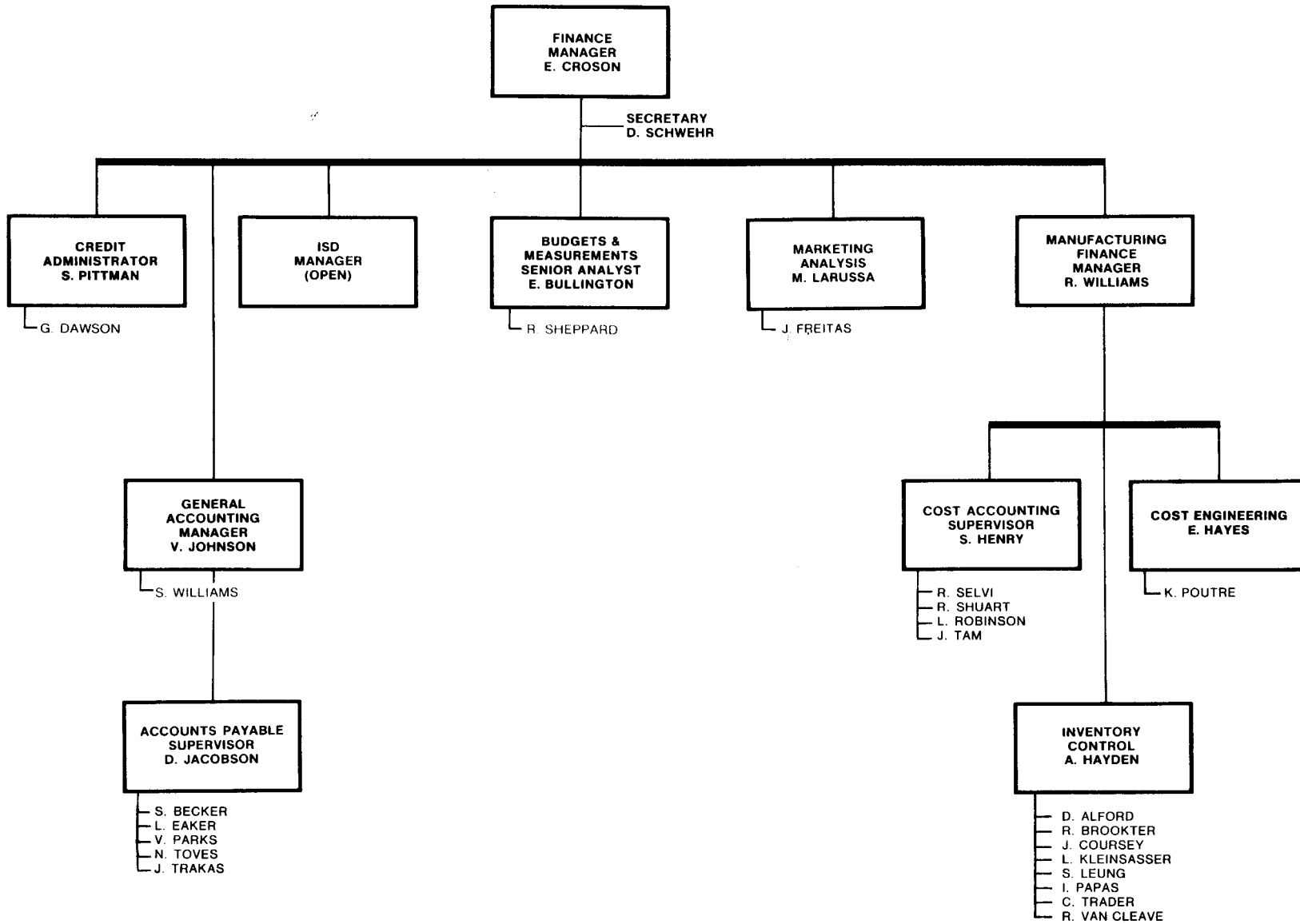
MANUFACTURING ORGANIZATION 7/1/80



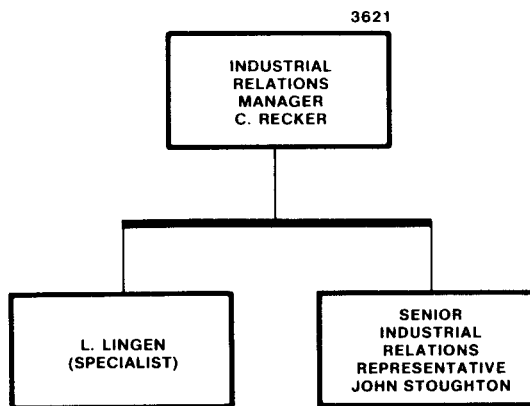
MARKETING DEPARTMENT 7/1/80



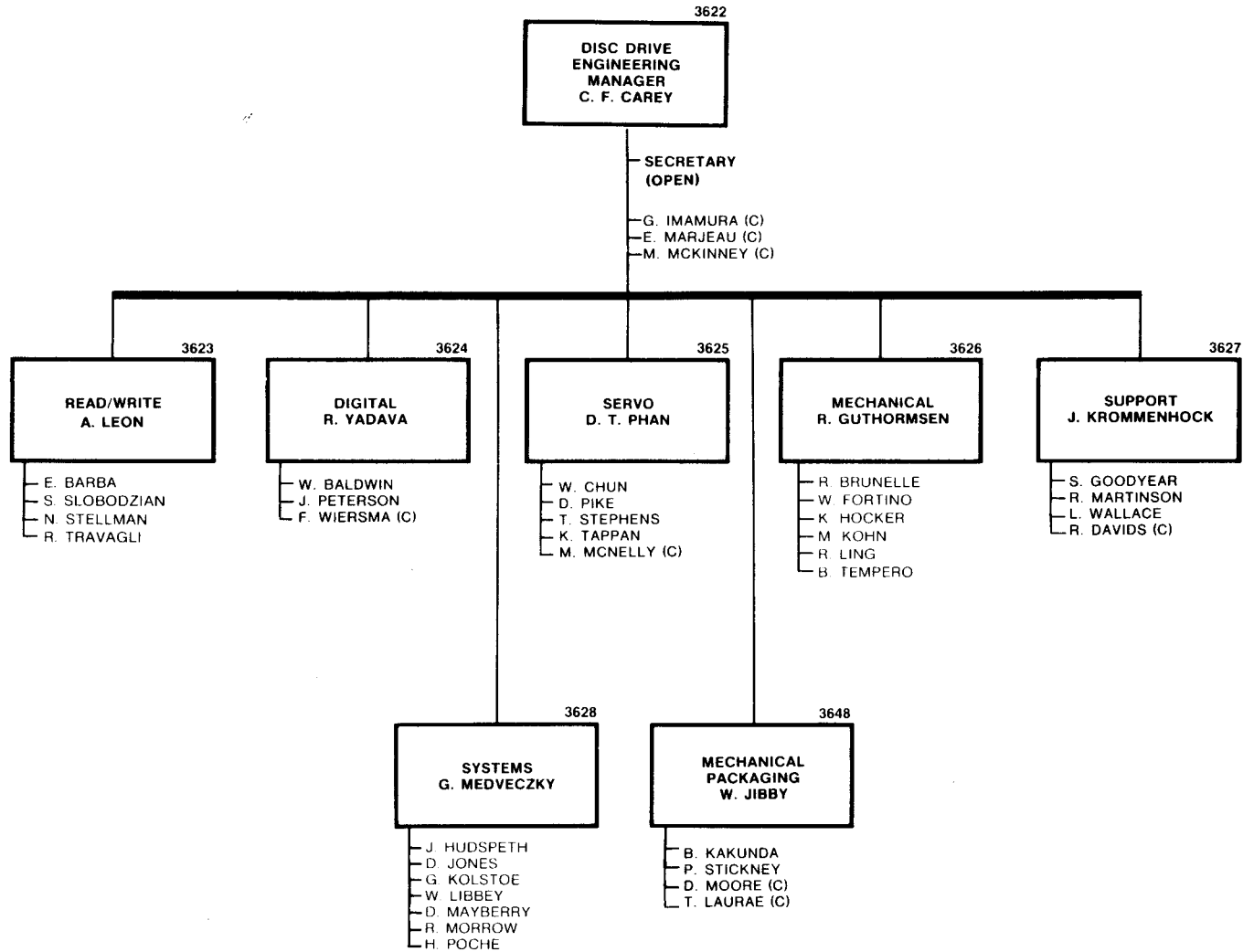
FINANCE ORGANIZATION 7/1/80



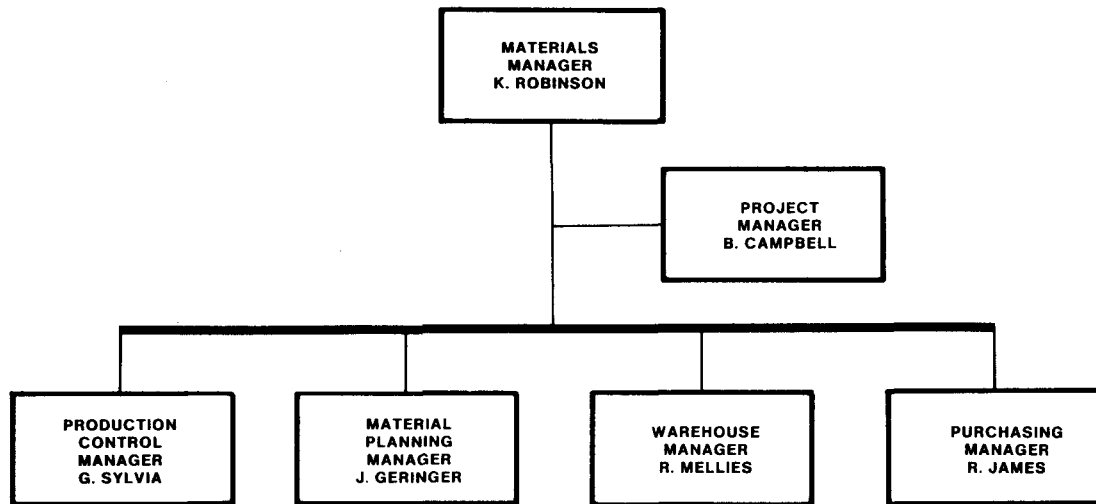
INDUSTRIAL RELATIONS ORGANIZATION 7/1/80

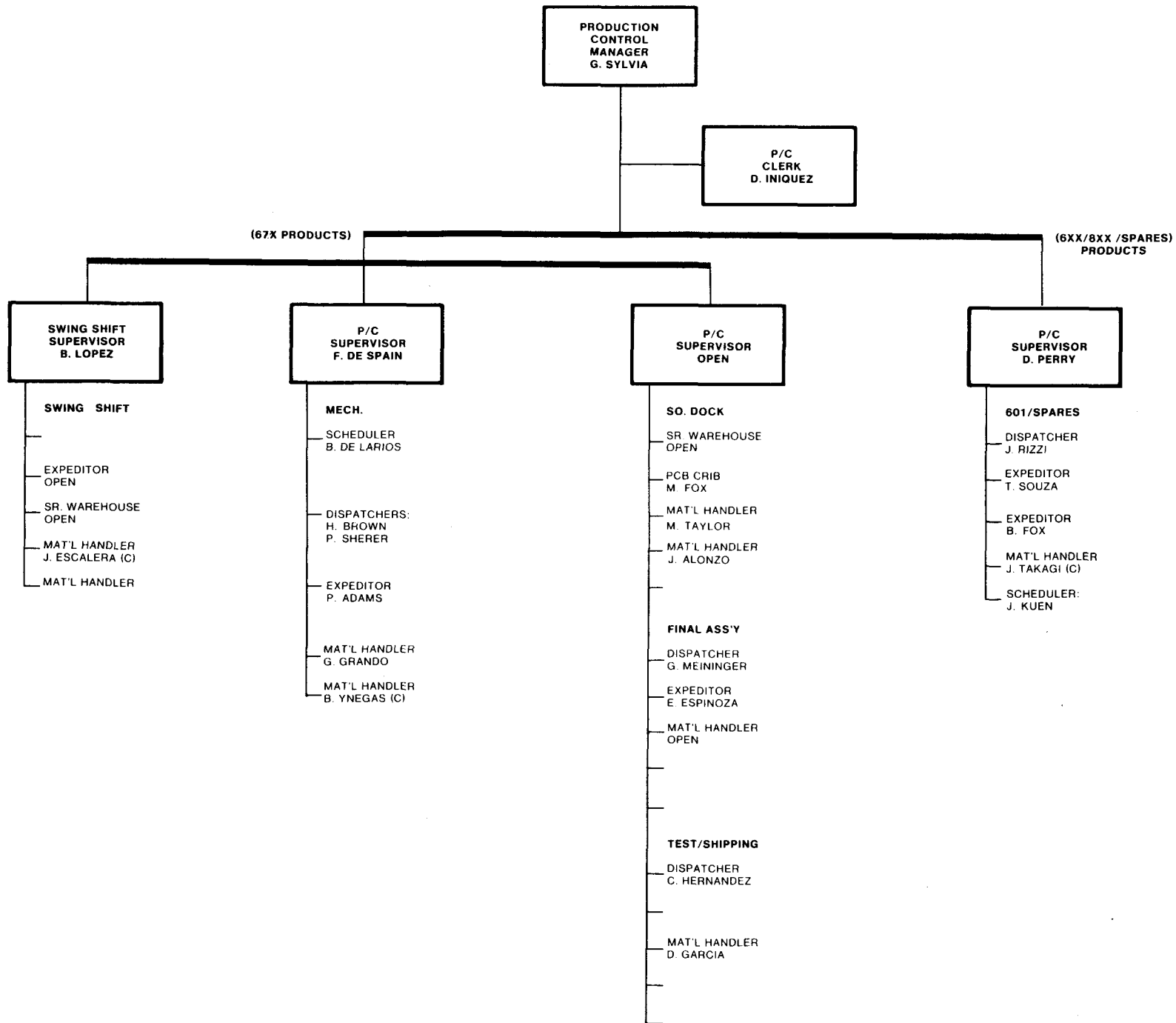


ENGINEERING ORGANIZATION 7/1/80

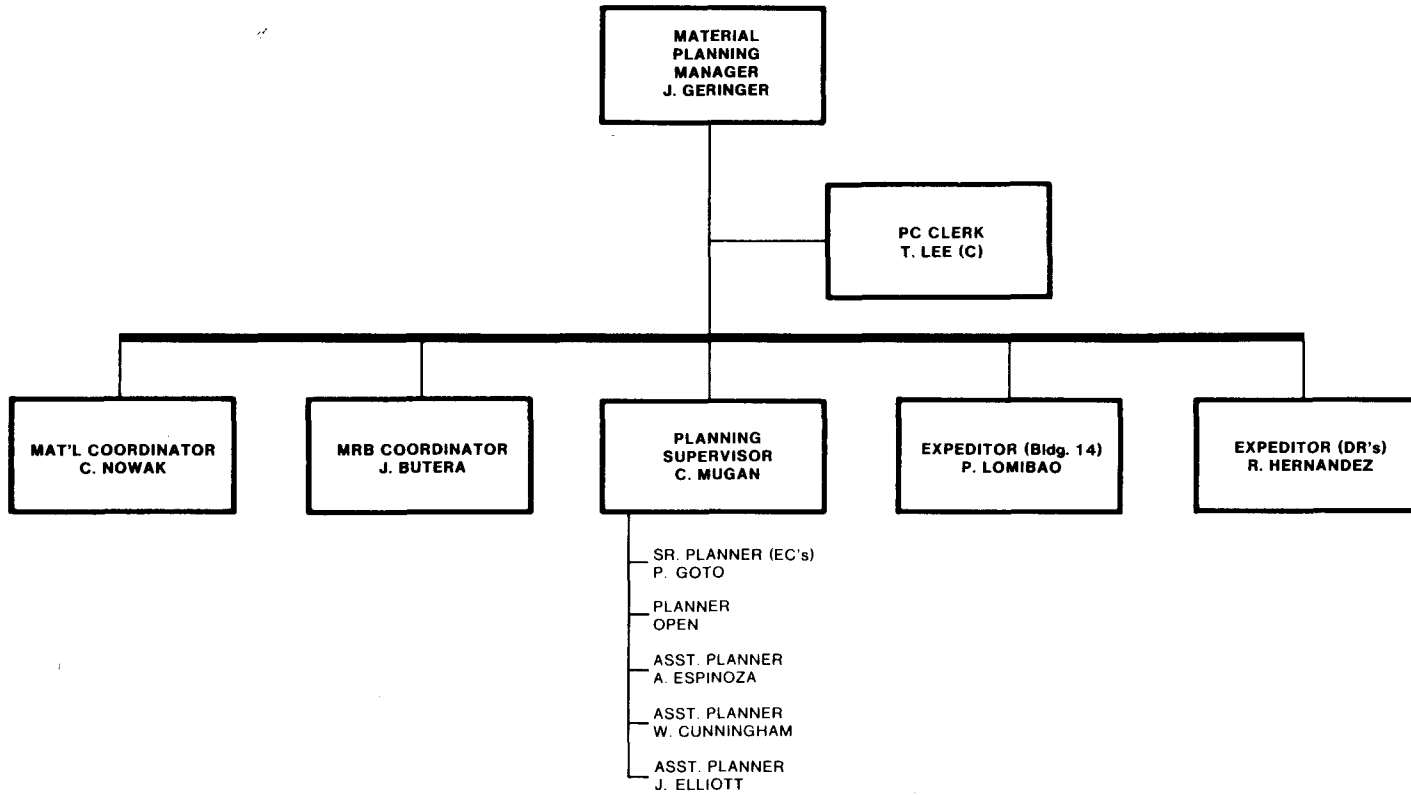


MATERIALS ORGANIZATION 7/1/80





MATERIAL ORGANIZATION 7/1/80



MATERIALS ORGANIZATION 7/1/80

**WAREHOUSE
MANAGER
R. MELLIES**

(DAY)

- S. EGSTAD (Lead)
- J. PRICE (Kitting Lead)
- D. WINGATE
- D. BATES
- D. SINKS
- OPEN
- S. DAVIS
- M. SUPP

(SWING)

- T. PACHECO (Lead)
- S. BUTRON
- D. EGGERT
- OPEN
- OPEN

MATERIAL ORGANIZATION 7/1/80

