

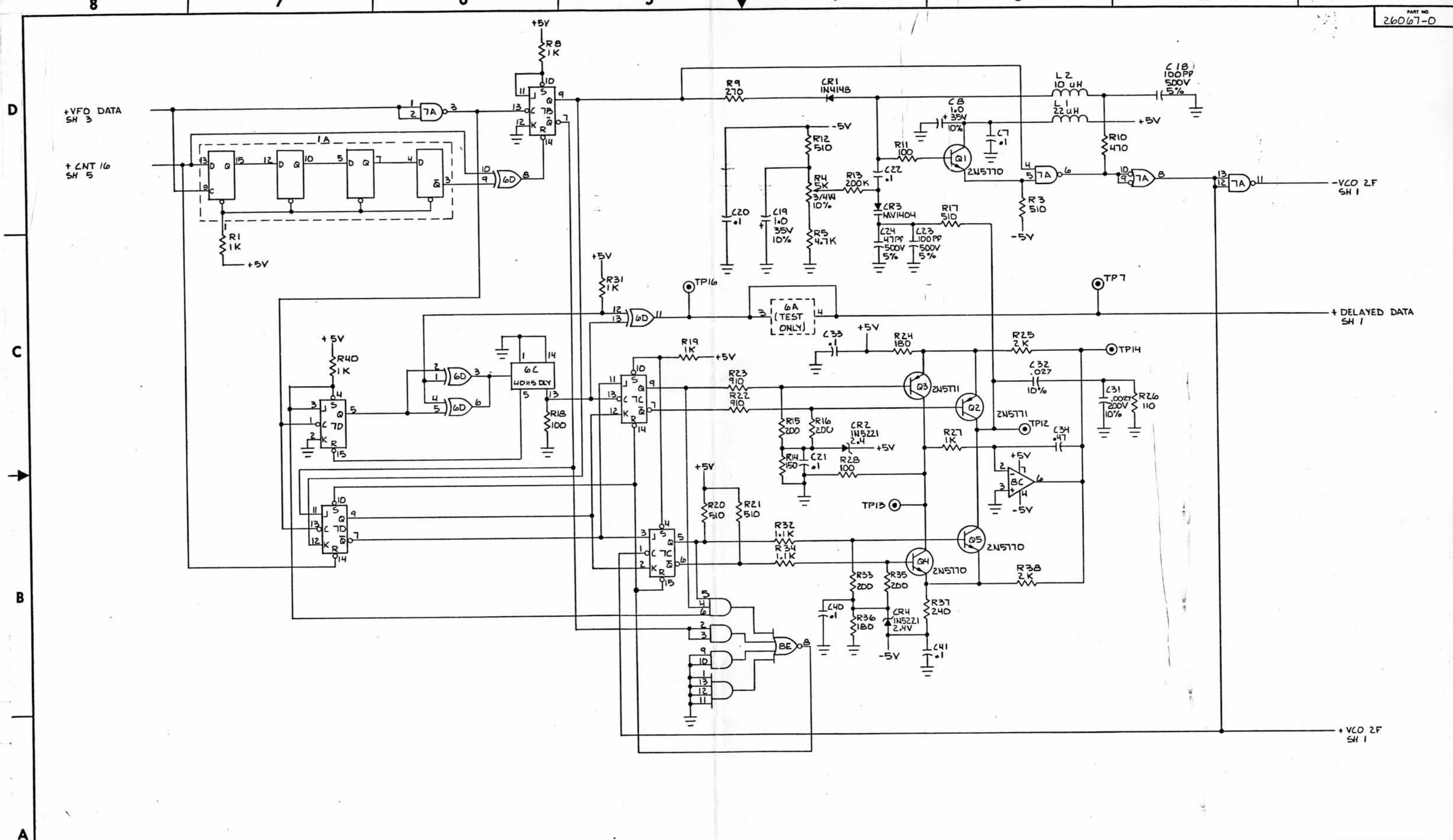
TYPE	POSITION	UNUSED ELEMENTS	+5V (PIN)	GND (PIN)	-5V (PIN)
74500	7A, 4B, 5E		14	7	
74502	1E		14	7	
74504	3D		14	7	
74508	6B		14	7	
7414	7F, 4G		14	7	
74520	5F		14	7	
7430	3P		14	7	
7438	6E		14	7	
74574	1C, 2D, 8E, 4E, 3E, 2E		14	7	
74586	6D		14	7	
74512	7B, 7C, 7D		16	8	
745175	4A, 3A, 2A, 1A, 3F, 2F		16	8	
74195	4C, 3C, 5D		16	8	
74LS221	2B		16	8	
741	8C		7	-	4
75107	6F, 7G, 1G		14	7	13
75110	7E, 6G, 5G, 3G, 2G		14	7	11
06C.2.68MHZ	1F		14	7	
	6A		16	8	

REFERENCE DESIGNATIONS	
LAST USED	NOT USED
C 77	C 9
CR 4	-
L 2	-
Q 5	-
R 70	-
TP 29	-
E 3	-
J 6	-
VR 1	-

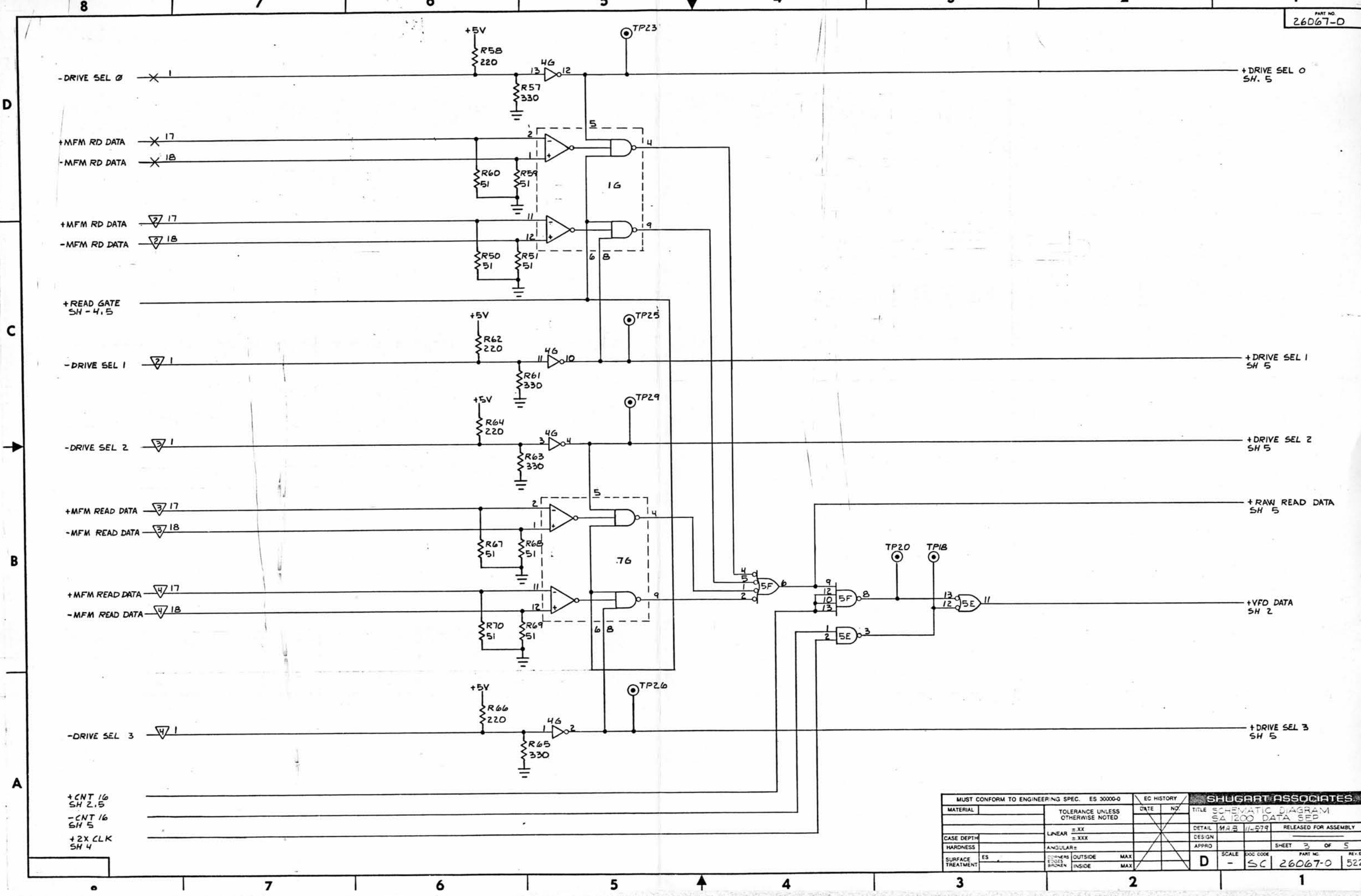
- NOTES: UNLESS OTHERWISE SPECIFIED
- ALL CAPACITORS ARE IN MICROFARADS 50V, +80%, -20%.
 - ALL INDUCTORS ARE IN MICROHENRYS, ±10%.
 - ALL RESISTOR ARE IN OHMS, 1/4W ±5%.
 - CONNECTOR REFERENCE SYMBOL:
 * = J1, ▽ = J2, ▽ = J3, ▽ = J4, ▽ = J5, ▽ = J6
 - O-O- INDICATES JUMPER OPTION
 - INDICATES NORMAL POSITION FOR SHORTING PLUGS

APR 15 1980

MUST CONFORM TO ENGINEERING SPEC. ES 30000-0		EC HISTORY		SHUGART ASSOCIATES	
MATERIAL	TOLERANCE UNLESS OTHERWISE NOTED	DATE	NO.	TITLE SCHEMATIC DIAGRAM SA 1200 DATA SEP	
		4-22	5222	DETAIL	MA B 11-2079 RELEASED FOR ASSEMBLY
CASE DEPTH	LINEAR ±.XX			DESIGN	E A. 3-27-80 26067
HARDNESS	ANGULAR ±.XXX			APPRO	SHEET 1 OF 5
SURFACE TREATMENT	CORNERS BROKEN OUTSIDE MAX INSIDE MAX			SCALE	DOC CODE PART NO. REV EC
				D	SC 26067-0 5222

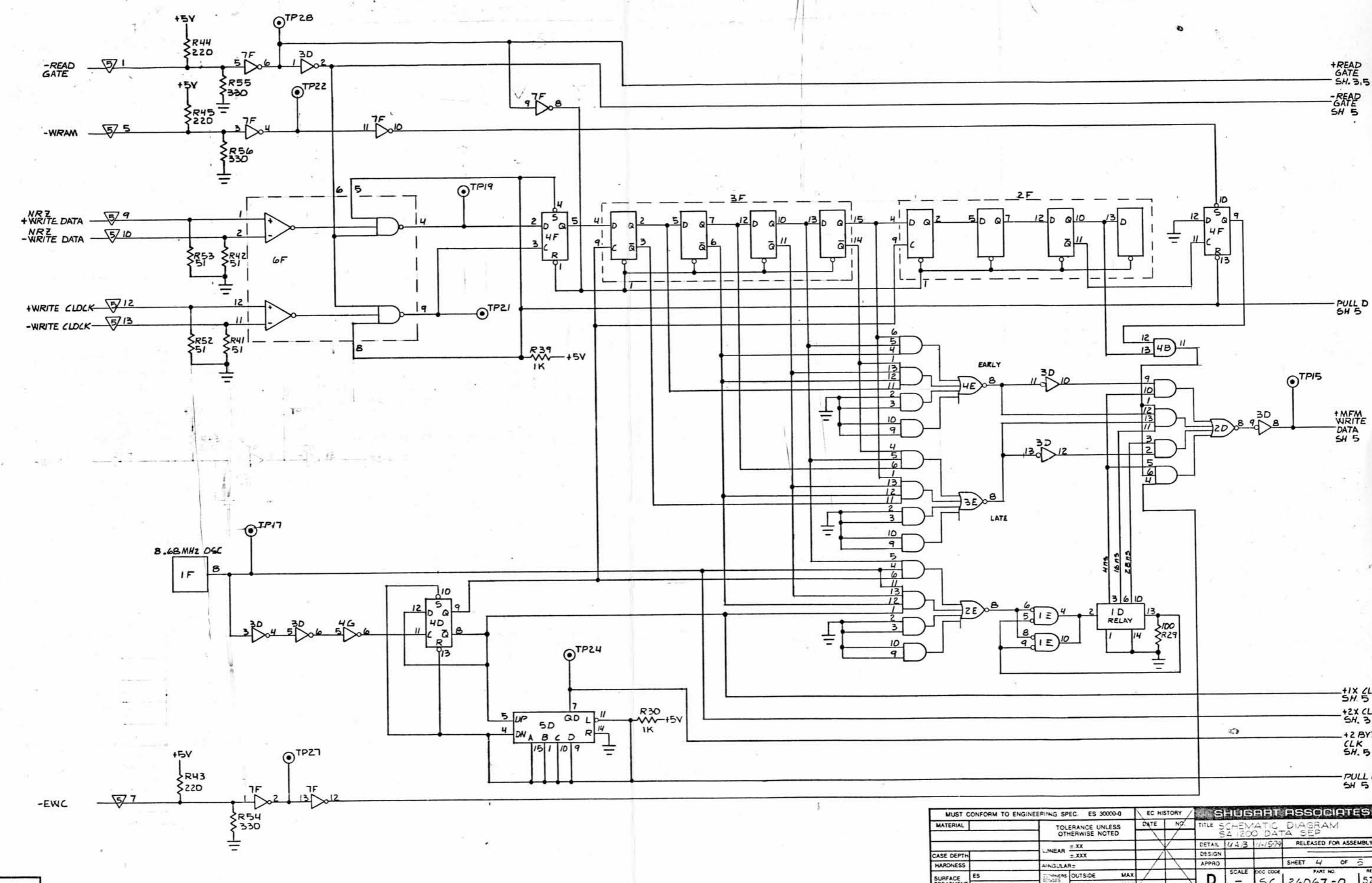


MUST CONFORM TO ENGINEERING SPEC. ES 30000-0		EC HISTORY		SHUGART ASSOCIATES	
MATERIAL	TOLERANCE UNLESS OTHERWISE NOTED	DATE	NO.	TITLE	SCHEMATIC DIAGRAM
	LINEAR ±XX			DETAIL	MAB 1-27-9
CASE DEPTH	HARDNESS ±XXX			DESIGN	RELEASED FOR ASSEMBLY
HARDNESS	ANGULAR ±			APPRO	SHEET 2 OF 5
SURFACE TREATMENT	ES			SCALE	500 CODE PART NO. 26067-0
	CORNERS EDGES BROKEN	OUTSIDE	MAX	D	REV. EC 5222
		INSIDE	MAX		

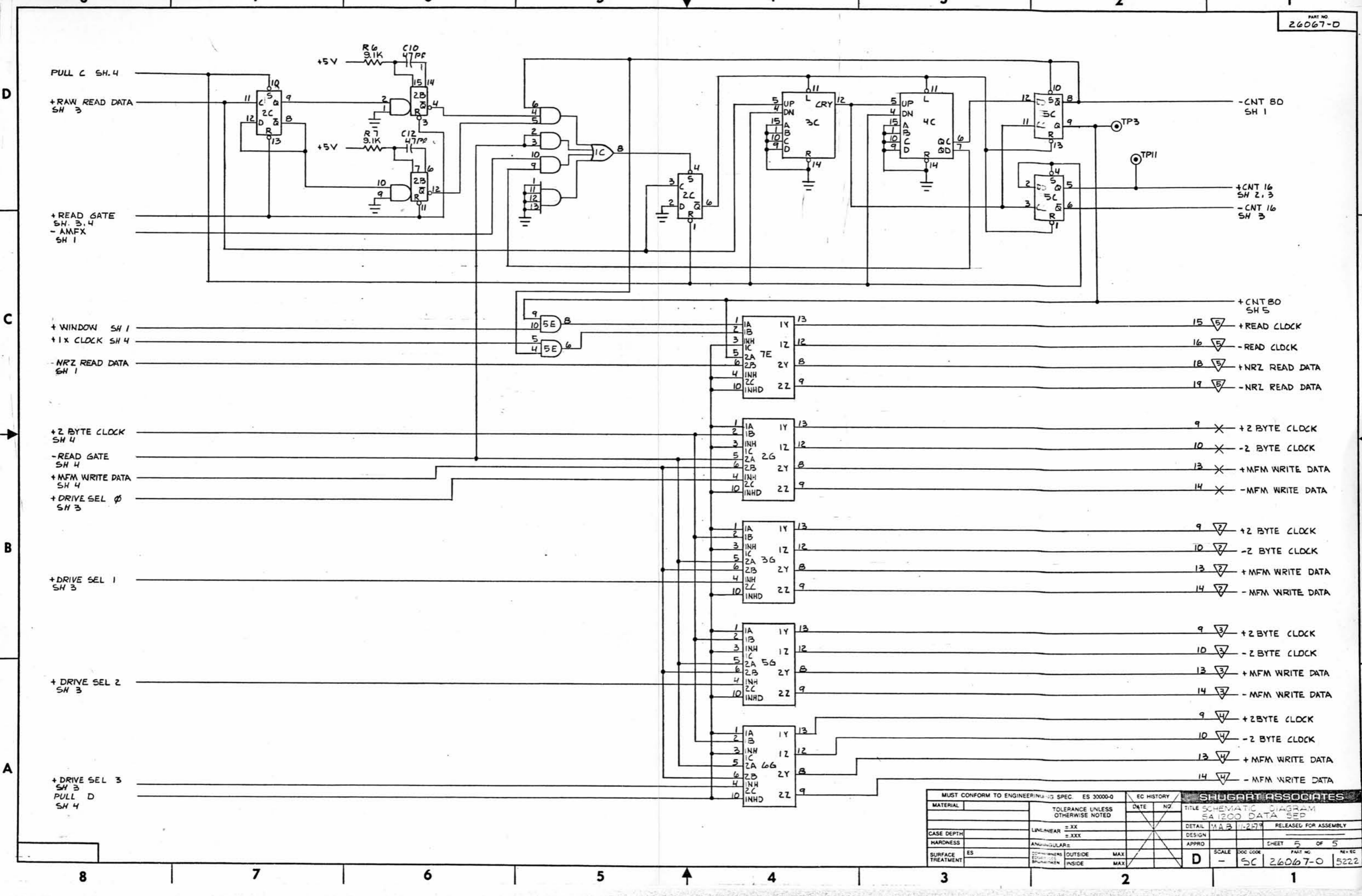


+CNT 16
SH 2.5
-CNT 16
SH 5
+2X CLK
SH 4

MUST CONFORM TO ENGINEERING SPEC. ES 30000-0		EC HISTORY		SHUGART ASSOCIATES	
MATERIAL	TOLERANCE UNLESS OTHERWISE NOTED	DATE	NO.	TITLE SCHEMATIC DIAGRAM SA 1200 DATA SEP	
CASE DEPTH	LINEAR = XX = XXX			DETAIL	RELEASED FOR ASSEMBLY
HARDNESS	ANGULAR =			DESIGN	
SURFACE TREATMENT	CORNERS EDGES BROKEN	OUTSIDE INSIDE	MAX MAX	APPRO	SHEET 3 OF 5
				SCALE	PART NO. 26067-0
				D	REV. EC 5222



MUST CONFORM TO ENGINEERING SPEC. ES 30000-0		EC HISTORY		SHUBART ASSOCIATES	
MATERIAL	TOLERANCE UNLESS OTHERWISE NOTED	DATE	NO.	TITLE SCHEMATIC DIAGRAM SA 1200 DATA SEP	
CASE DEPTH	L=LINEAR =.XX =XXX			DETAIL	RELEASED FOR ASSEMBLY
HARDNESS	A=ANGULAR =			DESIGN	
SURFACE TREATMENT	Z=ZINNERS B=BRASS P=PROMEN	OUTSIDE	MAX	APPRO	SHEET 4 OF 5
	INSIDE	MAX		SCALE	PART NO. 26067-0
				D	REV. EC 5222



MUST CONFORM TO ENGINEERING SPEC. ES 30000-0		EC HISTORY		SHUGART ASSOCIATES	
MATERIAL	TOLERANCE UNLESS OTHERWISE NOTED	DATE	NO.	TITLE	RELEASED FOR ASSEMBLY
	LINEAR = XX = XXX			SA 1200 DATA SEP	
CASE DEPTH	ANGULAR =			DETAIL MAB 11-277	CHEET 5 OF 5
HARDNESS	ES			DESIGN	SCALE DOC CODE PART NO. REV. EC
SURFACE TREATMENT	ES			APPRO	D - 5C 26067-0 5222